

TECHNICAL SPECIFICATION OF LT AC THREE PHASE, FOUR WIRE -/5 AMPS CT OPERATED FULLY STATIC AMR COMPATIBLE TOD TRI - VECTOR ENERGY METER AS PER CATEGORY - 'C' OF IS: 15959 / 2011 (WITH LATEST AMENDMENTS UPTO DATE) FOR DTC ENERGY ACCOUNTING AND AUDIT PURPOSE

MATERIAL SPECIFICATIONS CELL

TECHNICAL SPECIFICATION

LT AC THREE PHASE FOUR WIRE, -/5 AMPS CT OPERATED FULLY STATIC AMR COMPATIBLE TOD TRI – VECTOR ENERGY METER AS PER CATEGORY ‘C’ OF IS: 15959/2011 (WITH LATEST AMENDMENTS UPTO DATE) ALONG WITH METER BOX SUITABLE FOR AUTOMATIC METER READING (AMR) OF DISTRIBUTION TRANSFORMER CENTRE FOR ENERGY ACCOUNTING & AUDIT PURPOSE.

TECHNICAL SPECIFICATION NO.

CE/MMC/MSC-IV/DTC Meter/DATE: 19.12.2016

(Revised 28.02.2017)

TECHNICAL SPECIFICATION OF LT AC THREE PHASE, FOUR WIRE -/5 AMPS CT OPERATED FULLY STATIC AMR COMPATIBLE TOD TRI - VECTOR ENERGY METER AS PER CATEGORY - 'C' OF IS: 15959 / 2011 (WITH LATEST AMENDMENTS UPTO DATE) FOR DTC ENERGY ACCOUNTING AND AUDIT PURPOSE

TABLE OF CONTENTS

1.00	SCOPE	3
2.00	APPLICATION	3
3.00	SERVICE CONDITIONS.....	3
4.00	STANDARDS TO WHICH METERS SHALL COMPLY	4
5.00	GENERAL TECHNICAL REQUIREMENT	5
6.00	CONSTRUCTIONAL REQUIREMENT	6
7.00	TOD TIMING	13
8.00	DEMAND INTEGRETION PERIOD	13
9.00	MD RESET	14
10.00	TAMPER AND FRAUD MONITORING FEATURES.....	14
11.00	QUANTITIES TO BE MEASURED & DISPLAYED	17
12.00	DISPLAY OF MEASURED VALUES	18
13.00	BILLING DATA, BILLING HISTORY & BLOCK LOAD SURVEY	22
14.00	DEMONSTRATION	24
15.00	PERFORMANCE UNDER INFLUENCE QUANTITIES	24
16.00	HAND HELD UNIT (HHU)	24
17.00	COMPUTER SOFTWARE.....	25
18.00	CONNECTION DIAGRAM AND TERMINAL MARKINGS	26
19.00	NAME PLATE AND MARKING OF METERS.....	26
20.00	TESTS.....	27
21.00	GUARANTEED TECHNICAL PARTICULARS	30
22.00	PRE-DESPATCH INSPECTIONS	30
23.00	JOINT INSPECTION AFTER RECEIPT AT STORES (RST).....	30
24.00	GUARANTEE.....	31
25.00	PACKING	31
26.00	TENDER SAMPLE	32
27.00	QUALITY CONTROL.....	32
28.00	MINIMUM TESTING FACILITIES.....	32
29.00	MANUFACTURING PROCESS, ASSEMBLY, TESTING	34
30.00	QUALITY ASSURANCE PLAN	37
31.00	COMPONENT SPECIFICATION	37
32.00	SCHEDULES	37
	SCHEDULE - 'C'	39
	ANNEXURE - I	40
	ANNEXURE - II.....	42
	SCHEDULE - 'A'.....	46

TECHNICAL SPECIFICATION OF LT AC THREE PHASE, FOUR WIRE -/5 AMPS CT OPERATED FULLY STATIC AMR COMPATIBLE TOD TRI - VECTOR ENERGY METER AS PER CATEGORY - 'C' OF IS: 15959 / 2011 (WITH LATEST AMENDMENTS UPTO DATE) FOR DTC ENERGY ACCOUNTING AND AUDIT PURPOSE

1.00 SCOPE

This specification covers design, manufacturing, testing, supply and delivery of ISI mark, LT AC, three Phase, four Wire, -/5 Amps, CT operated fully Static and AMR compatible TOD Tri - Vector Energy Meters as per Category 'C' of IS: 15959 / 2011 with latest amendments up to date for measurement of different electrical parameters listed elsewhere in this document including Active Energy (kWh), Reactive Energy (kVArh), Apparent Energy (kVAh) etc for Distribution Transformer Centre Energy Accounting and Audit purpose.

The meter shall conform in all respects to high standards of engineering, design and workmanship and shall be capable of performing in continuous commercial operation, in a manner acceptable to purchaser, who will interpret the meaning of drawings and specification and shall have the power to reject any work or material which, in his judgment is not in accordance therewith. The offered material shall be complete with all components necessary for their effective and trouble free operation. Such components shall be deemed to be within the scope of Bidder's supply irrespective of whether those are specifically brought out in these specifications and / or the commercial order or not.

2.00 APPLICATION

For use on Distribution Transformer Centre for Energy Accounting and Audit purpose.

3.00 SERVICE CONDITIONS

As per IS: 14697 / 1999 (amended up to date), the meter to perform satisfactorily under Non-Air Conditioned environment (within stipulations of IS). The equipments to be supplied against this specification shall be suitable for satisfactory continuous operation under the following tropical conditions.

Environmental Conditions

- | | |
|--|------------|
| a) Maximum ambient temperature | 55°C |
| b) Maximum ambient temperature in shade | 45°C |
| c) Minimum temperature of air in shade | 35°C |
| d) Maximum daily average temperature | 40°C |
| e) Maximum yearly weighted average temperature | 32°C |
| f) Relative Humidity | 10 to 95 % |
| g) Maximum Annual rainfall | 1450 mm |

TECHNICAL SPECIFICATION OF LT AC THREE PHASE, FOUR WIRE -/5 AMPS CT OPERATED FULLY STATIC AMR COMPATIBLE TOD TRI - VECTOR ENERGY METER AS PER CATEGORY - 'C' OF IS: 15959 / 2011 (WITH LATEST AMENDMENTS UPTO DATE) FOR DTC ENERGY ACCOUNTING AND AUDIT PURPOSE

- | | |
|--|-----------------------|
| h) Maximum wind pressure | 150 kg/m ² |
| i) Maximum altitude above mean sea level | 1000 meters |
| j) Isoceraunic level | 50 days/year |
| k) Seismic level (Horizontal acceleration) | 0.3 g |
| l) Climate: Moderately hot and humid tropical climate conducive to rust and fungus growth. | |

4.00 STANDARDS TO WHICH METERS SHALL COMPLY

IS: 15959 / 2011 - Data Exchange for Electricity Meter Reading, Tariff and Load Control – companion specification for Category – “C” Meters;

IS: 14697 / 1999 (amended up to date) for AC Static Transformer operated Watt-hour and VAR-hour Meters, Class 0.5 S – Specification.

CBIP Tech-Report - 304 amended up to date for AC Static Transformer operated Watt Hour & VAR-Hour Meters (class 0.5S);

IS: 15707 / 2006 Specification for Testing, evaluation, installation & maintenance of AC Electricity Meters-Code of Practice;

CEA regulations and MERC guidelines with latest amendments.

The specification given in this document supersedes the relevant clauses of IS: 14697 / 1999 (amended up to date) wherever applicable.

The equipment meeting with the requirements of other authoritative standards, which ensures equal or better quality than the standard mentioned above, also shall be considered.

In case the bidder wishes to offer material conforming to the other authoritative standards, salient points of difference between the standards adopted and the specific standards shall be clearly brought out in relevant schedule. Copy of such standards with authentic English Translations, shall be furnished along with the offer.

In case of conflict related with communication protocol, the Indian standard IS: 15959 / 2011 Data Exchange for Electricity Meter Reading, Tariff and Load Control – Companion Specification shall prevail upon.

For conflict related with other parts of the specification, the order of priority shall be – (i) this technical specification, (ii) IS: 14697 / 1999 amended upto date & CBIP Tech-Report - 304. (iii) IEC, (iv) other authoritative standards.

In case of any difference between provisions of these standards, the provisions of this specification shall prevail.

TECHNICAL SPECIFICATION OF LT AC THREE PHASE, FOUR WIRE -/5 AMPS CT OPERATED FULLY STATIC AMR COMPATIBLE TOD TRI - VECTOR ENERGY METER AS PER CATEGORY - 'C' OF IS: 15959 / 2011 (WITH LATEST AMENDMENTS UPTO DATE) FOR DTC ENERGY ACCOUNTING AND AUDIT PURPOSE

5.00 GENERAL TECHNICAL REQUIREMENTS

1	TYPE	LT AC, Three Phase, Four Wire, -/5 Amps CT operated fully Static & AMR compatible TOD Tri - Vector energy Meters with Optical & RS 232 Port as per Category 'C' of IS: 15959 / 2011 (with latest amendments upto date) for Distribution Transformer Centre Energy Accounting and Audit purpose.
2	FREQUENCY	50 Hz \pm 5%
3	ACCURACY CLASS	0.5S
4	RATED VOLTAGE	415 V Ph-Ph or 240 V Ph-N
5	VOLTAGE RANGE.	+15% to - 30% of rated voltage.
6	CURRENT RATING	-/5 Amps
7	BASIC CURRENT Ib	5 Amps
8	MAXIMUM CONTINUOUS CURRENT (Imax)	2 times (200 %) Ib
9	SHORT TIME OVER CURRENT	As per IS: 14697 / 1999
10	STARTING CURRENT	0.1% of Ib
11	POWER CONSUMPTION	<p>The active and apparent power consumption, in each voltage circuit, at reference voltage, reference temperature and reference frequency shall not exceed 1.5 W and 10 VA.</p> <p>The apparent power taken by each current circuit, at basic current Ib, reference frequency and reference temperature shall not exceed 1 VA.</p>

TECHNICAL SPECIFICATION OF LT AC THREE PHASE, FOUR WIRE -/5 AMPS CT OPERATED FULLY STATIC AMR COMPATIBLE TOD TRI - VECTOR ENERGY METER AS PER CATEGORY - 'C' OF IS: 15959 / 2011 (WITH LATEST AMENDMENTS UPTO DATE) FOR DTC ENERGY ACCOUNTING AND AUDIT PURPOSE

12	POWER FACTOR	0.0 Lag – Unity – 0.0 Lead. For leading Power factor, the value of kVAh shall be equal to kWh for the purpose of calculation of average power factor (on the basis of kWh/ kVAh) i.e. the value of kVAh shall be based on lagging value of kVArh & kWh.
13	DESIGN	Meter shall be designed with application specific integrated circuit (ASIC) or micro controller; shall have no moving part; electronic components shall be assembled on printed circuit board using surface mounting technology; factory calibration using high accuracy (0.05 class) software based test bench.
14	POWER SUPPLY	SMPS
15	TEMPERATURE.	The standard reference temperature for performance shall be 27 ⁰ C. The mean temperature co - efficient shall not exceed 0.03%.
16	ISI MARK	The meters shall bear ISI Mark.

6.00 CONSTRUCTIONAL REQUIREMENTS

6.01 GENERAL MECHANICAL REQUIREMENTS

The meter shall be designed and constructed in such a way as to avoid introducing any danger in normal use and under normal conditions, so as to ensure especially:

- (a) personal safety against electric shock;
- (b) personal safety against effects of excessive temperature;
- (c) safety against spread of fire;
- (d) protection against penetration of solid objects, dust and water.
- (e) Detection of fraud / pilferage

6.02 The meter shall be projection type and shall be dust and moisture proof. All parts that are likely to develop corrosion under normal

TECHNICAL SPECIFICATION OF LT AC THREE PHASE, FOUR WIRE -/5 AMPS CT OPERATED FULLY STATIC AMR COMPATIBLE TOD TRI - VECTOR ENERGY METER AS PER CATEGORY - 'C' OF IS: 15959 / 2011 (WITH LATEST AMENDMENTS UPTO DATE) FOR DTC ENERGY ACCOUNTING AND AUDIT PURPOSE

working condition shall be effectively protected against corrosion by suitable method to achieve durable results.

6.03 All insulating materials used in the construction of the meter shall be substantially non-hygroscopic, non ageing and of tested quality.

6.04 **METER CASE**

6.04.01 The meter base & cover shall be made out of transparent, unbreakable, high grade, fire resistant polycarbonate material so as to give it tough and non-breakable qualities.

6.04.02 The polycarbonate body of the meter shall conform to IS: 11731 / 1986 (FV-2 Category) besides meeting the test requirement of heat deflection test as per ISO 75, glow wire test as per the IS: 11000 (part 2/SEC-1) 2008 or IEC-60695-2-12, Ball pressure test as per IEC-60695-10-2 and Flammability Test as per UL 94 or as per IS: 11731 (Part-2) 1986. The type test certificate shall be submitted along with the offer.

6.04.03 The transparent polycarbonate base and cover of meter shall be ultrasonically welded (continuous welding) so that once the meter is manufactured and tested at factory; it shall not be possible to open the cover at site except the terminal cover. The thickness of material for meter cover and base shall be 2 mm (minimum).

6.04.04 The meter body shall be type tested for IP51 degree of protection as per IS: 12063 against ingress of dust, moisture & vermin. The type test certificate shall be submitted along with the offer.

6.04.05 The meter cover shall be secured to base by means of sealable unidirectional captive screws with two holes.

6.05 **TERMINALS & TERMINAL BLOCK**

6.05.01 The terminal block shall be made from high quality non-hygroscopic, fire retardant, reinforced polycarbonate / non-Bakelite material which shall form an extension of the meter case.

6.05.02 The material of which the terminal block is made shall be capable of passing the tests given in IS: 13360 (Part 6/Sec 17), ISO 75-1 (1993) & ISO 75-2 (1993) for a temperature of 135°C and a pressure of 1.8 MPa (Method A). The type test certificate shall be submitted along with the offer.

6.05.03 The holes in the insulating material which form an extension of the terminal holes shall be of sufficient size to also accommodate the insulation of the conductors.

TECHNICAL SPECIFICATION OF LT AC THREE PHASE, FOUR WIRE -/5 AMPS CT OPERATED FULLY STATIC AMR COMPATIBLE TOD TRI - VECTOR ENERGY METER AS PER CATEGORY - 'C' OF IS: 15959 / 2011 (WITH LATEST AMENDMENTS UPTO DATE) FOR DTC ENERGY ACCOUNTING AND AUDIT PURPOSE

- 6.05.04 The manner of fixing the conductors to the terminals shall ensure adequate and durable contact such that there is no risk of loosening or undue heating.
- 6.05.05 Screw connections transmitting contact force and screw fixings which may be loosened and tightened several times during the life of meter shall screw into metal nuts.
- 6.05.06 All parts of every terminal shall be such that the risk of corrosion resulting from contact with any other metal part is minimized.
- 6.05.07 Electrical connections shall be so designed that contact pressure is not transmitted through insulating material of the terminal block.
- 6.05.08 The terminals, the conductor fixing screws or the external or internal conductors shall not be liable to come into contact with terminal covers.
- 6.05.09 Two screws shall be provided in each current & potential terminal for effectively clamping the external leads or thimbles.
- 6.05.10 Each clamping screw shall engage a minimum of three threads in the terminal. The ends of screws shall be such as not to pierce and cut the conductors used.
- 6.05.11 The minimum internal diameter of terminal hole shall be as per IS: 14697 / 1999 or CBIP Tech Report 304.
- 6.05.12 The manufacturer shall ensure that the supporting webs between two terminals of the terminal block shall be sufficiently high to ensure that two neighboring terminals do not get bridged by dust and there shall not be any possibility of flash over between adjacent terminals of the terminal block.

6.06 TERMINAL COVER

- 6.06.01 The termination arrangement shall be provided with an extended transparent terminal cover as per clause number 6.5.2 of IS: 14697 / 1999 (amended upto date) irrespective of rear connections.
- 6.06.02 The terminal cover shall be made out of same material as that of meter body. The terminal cover shall be unbreakable, high grade, fire resistant Polycarbonate material so as to give it tough and non-breakable qualities. The terminal cover shall be transparent.
- 6.06.03 The terminal cover shall be provided with one side hinge.
- 6.06.04 The terminal cover shall enclose the actual terminals, the conductor fixing screws and unless otherwise specified, a suitable length of external conductors and their insulation.

TECHNICAL SPECIFICATION OF LT AC THREE PHASE, FOUR WIRE -/5 AMPS CT OPERATED FULLY STATIC AMR COMPATIBLE TOD TRI - VECTOR ENERGY METER AS PER CATEGORY - 'C' OF IS: 15959 / 2011 (WITH LATEST AMENDMENTS UPTO DATE) FOR DTC ENERGY ACCOUNTING AND AUDIT PURPOSE

- 6.06.05 Independent sealing provision shall be made against opening of the terminal cover and front cover to prevent unauthorized tampering. It is necessary to provide unidirectional screws with two holes for sealing purpose of terminal cover. The meter shall be pilfer-proof & tamper-proof.
- 6.06.06 The fixing screws used on the terminal cover for fixing and sealing in terminal cover shall be held captive in the terminal cover.
- 6.06.07 Proper size of grooves shall be provided at bottom of this terminal cover for incoming service connections.
- 6.06.08 When the meter is mounted, no access to the terminals by any means shall be possible without breaking seals(s) of the terminal cover

6.07 RESISTANCE TO HEAT AND FIRE

The terminal block, the terminal cover and the meter case shall ensure reasonable safety against the spread of fire. They shall not be ignited by thermal overload of live parts in contact with them.

- 6.08 The meter shall be completely factory sealed except the terminal block cover.
- 6.09 The provision shall be made on the meter for at least two seals to be put by utility user.
- 6.10 A sticker label containing warning notice in Marathi language which is to be stick up on meters front cover or printed on meter name plate with easily readable font size not less than 10 in red colour, which reads as “ सावधान ! "मीटरला फेरफार करण्याचा प्रयत्न केल्यास अधिकतम वेगाने वीज तोडली होईल ”
- 6.11 A Push button facility shall be provided for high resolution reading / alternate mode of display, as brought out elsewhere in this specification.

6.12 OUTPUT DEVICE

The meter shall have test output accessible from the front and be capable of being monitored with suitable testing equipment while in operation at site. The operation indicator must be visible from front. The test output device shall be provided in the form of blinking LED. Resolution of the test output device shall be sufficient to enable the starting current test in less than 10 minutes. The pulse rate of output device which is Pulse / kWh and Pulse / kVARh (meter constant) shall be indelibly provided on the nameplate.

TECHNICAL SPECIFICATION OF LT AC THREE PHASE, FOUR WIRE -/5 AMPS CT OPERATED FULLY STATIC AMR COMPATIBLE TOD TRI - VECTOR ENERGY METER AS PER CATEGORY - 'C' OF IS: 15959 / 2011 (WITH LATEST AMENDMENTS UPTO DATE) FOR DTC ENERGY ACCOUNTING AND AUDIT PURPOSE

- 6.13 The meter accuracy shall not be affected by magnetic field (AC / DC / Permanent) upto 0.2 Tesla on all the sides of meter, i.e. front, sides, top and bottom of the meter as per CBIP Technical Report 304 with latest amendments. Under influence of any magnetic field (AC / DC / Permanent) above 0.2 Tesla, if the accuracy of the meter gets affected, then the meter shall record energy considering I_{max} and reference voltage at unity power factor.
- 6.14 The meter shall also be capable to withstand and shall not get damaged if phase to phase voltage is applied between phases & neutral for five minutes.
- 6.15 In meter, power supply unit shall be micro control type instead of providing conventional transformer and then conversion to avoid magnetic influence.
- 6.16 Non specified display parameter in the meter shall be blocked and it shall not be accessible for reprogramming at site.
- 6.17 Complete metering system shall not be affected by the external electromagnetic interference such as electrical discharge of cables and capacitors, harmonics, electrostatic discharges, external magnetic fields and DC current in AC supply etc.
- 6.18 CTs are to be provided with magnetic shielding and shall be tested separately prior to assembly.
- 6.19 PCB used in meter shall be made by Surface Mounting Technology.

6.20 **REAL TIME INTERNAL CLOCK (RTC)**

The real time quartz clock shall be used in the meter for maintaining time (IST) and calendar. The RTC shall be non - rechargeable and shall be pre-programmed for 30 Years Day / date without any necessity for correction. The maximum drift shall not exceed +/- 300 seconds per year.

The clock day/date setting and synchronization shall only be possible through password / Key code command from one of the following:

- a) Hand Held Unit (HHU) or Meter testing work bench and this shall need password enabling for meter;
- b) From remote server through suitable communication network or Sub-station data logger 'PC'.

The RTC battery & the battery for display in case of power failure shall be separate.

TECHNICAL SPECIFICATION OF LT AC THREE PHASE, FOUR WIRE -/5 AMPS CT OPERATED FULLY STATIC AMR COMPATIBLE TOD TRI - VECTOR ENERGY METER AS PER CATEGORY - 'C' OF IS: 15959 / 2011 (WITH LATEST AMENDMENTS UPTO DATE) FOR DTC ENERGY ACCOUNTING AND AUDIT PURPOSE

6.21 The meter shall withstand any type of High Voltage and High Frequency surges which are similar to the surges produced by induction coil type instruments without affecting the accuracy of the meter as per IS.

The accuracy of the meter shall not be affected with the application of abnormal voltage / frequency generating device such as spark discharge of approximately 35 KV. The meter shall be tested by feeding the output of this device to meter in any of the following manner for 10 minutes:

- (i) On any of the phases or neutral terminals
- (ii) On any connecting wires of the meter (Voltage discharge with 0-10 mm spark gap)
- (iii) At any place in load circuit.

The accuracy of meter shall be checked before and after the application of above device.

6.22 The meter shall remain immune for the test of electromagnetic HF/RF defined under clause no. 5.5.4 of the CBIP tech report 304 and the test no. 4.0 for EMI/EMC of IS 14697:1999 amended up to date.

6.23 For any higher signals than the present standards and MSEDCL technical specifications indicated above, if the accuracy of meter gets affected, it shall record energy considering meters maximum current, reference voltage & U.P.F. during such tampering events for defined period of 7 days. The same shall log the event with date and time stamping. The same shall be displayed in the scrolling mode. After that meter should record normal energy consumption.

The communication of energy meters shall not be affected considering the above feature state in the clause 6.22 & 6.23.

6.24 SELF DIAGNOSTIC FEATURES

6.24.01 The meter shall keep log in its memory for unsatisfactory functioning or nonfunctioning of Real Time Clock battery

6.24.02 All display segments: "LCD Test" display shall be provided for this purpose.

6.25 METER PROTOCOL

The meter protocol shall be as per Annex E - Category C meters of IS: 15959 / 2011.

TECHNICAL SPECIFICATION OF LT AC THREE PHASE, FOUR WIRE -/5 AMPS CT OPERATED FULLY STATIC AMR COMPATIBLE TOD TRI - VECTOR ENERGY METER AS PER CATEGORY - 'C' OF IS: 15959 / 2011 (WITH LATEST AMENDMENTS UPTO DATE) FOR DTC ENERGY ACCOUNTING AND AUDIT PURPOSE

6.26 The watch dog provided shall invariably protect the hanging of microprocessor during such type of tampering devices.

6.27 COMMUNICATION CAPABILITY

The meter shall be provided with two ports for communication of the measured / collected data as per the IS: 15959 / 2011, i.e. a hardware port compatible with RS 232 specifications (RJ - 11 / RJ - 45 type is also acceptable) which shall be used for remote access through suitable Modem (GPRS / GSM / EDGE / CDMA / PSTN / LPR) and an Optical port complying with hardware specifications detailed in IEC – 62056 - 21. This shall be used for local data downloading through a DLMS compliant HHU. RS 232 port or TCP / IP port as required on terminal block is also acceptable.

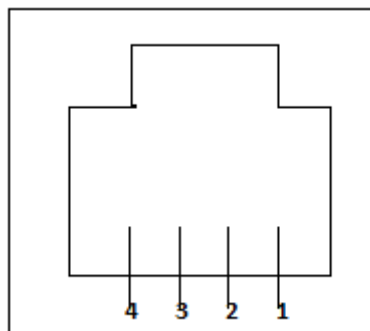
Sealing arrangement for Optical & RS 232 port or TCP / IP port as required shall be provided.

Both ports shall support the default and minimum baud rate of 9600 bps.

Necessary chord for Optical Port of minimum length of 1 metre in the ratio 50:1 shall be provided free of cost.

Meter side RJ-11 pin-out details

RJ-11 pin-out diagram



Pin Description

Pin No	Signal
1	RTS (Ready To Send)
2	Clear To Send (CTS)
3	Transmit Data (Tx)
4	Receive Data (Rx)

TECHNICAL SPECIFICATION OF LT AC THREE PHASE, FOUR WIRE -/5 AMPS CT OPERATED FULLY STATIC AMR COMPATIBLE TOD TRI - VECTOR ENERGY METER AS PER CATEGORY - 'C' OF IS: 15959 / 2011 (WITH LATEST AMENDMENTS UPTO DATE) FOR DTC ENERGY ACCOUNTING AND AUDIT PURPOSE

6.28 The meter shall have facility to read the default display parameters during Power supply failure. For this purpose an internal or external battery may be provided.

The internal battery shall be Ni-mh or Li-ion or NI CD maintenance free battery of long life of minimum 10 years. A suitable Push Button arrangement for activation of this battery shall be provided. Alternatively, push button provided for displaying alternate mode (On Demand Mode) parameters shall also be acceptable for activation of battery during power OFF condition.

The external battery, if provided, shall be with inductive coupling arrangement. The external battery is to be provided with inbuilt charger, in the ratio of one battery pack per 50 nos. meter.

6.29 WIRE / CABLE LESS DESIGN

The meter PCB shall be wire less to avoid improper and loose connections / contacts.

6.30 Meter shall record & display total energy including Harmonic energy.

6.31 The data stored in the meters shall not be lost in the event of power failure. The meter shall have Non Volatile Memory (NVM), which does not need any battery backup. The NVM shall have a minimum retention period of 10 years.

6.32 Reverse reading lock of main KWh reading is to be incorporated with necessary software modification if required additionally.

7.00 TOD TIMING

There shall be provision for at least 6 (Six) TOD time zones for energy and demand. The number and timings of these TOD time Zones shall be programmable.

At present the time zones shall be programmed as below.

ZONE A (TZ1): 0000 Hrs. to 0600 Hrs. and 2200 Hrs. to 2400 Hrs.

ZONE B (TZ2): 0600 Hrs. to 0900 Hrs. and 1200 Hrs. to 1800 Hrs.

ZONE C (TZ3): 0900 Hrs. to 1200 Hrs.

ZONE D (TZ4): 1800 Hrs. to 2200 Hrs.

8.00 DEMAND INTEGRATION PERIOD

The maximum demand integration period shall be set at 15 minute or 30 minute as per requirement.

TECHNICAL SPECIFICATION OF LT AC THREE PHASE, FOUR WIRE -/5 AMPS CT OPERATED FULLY STATIC AMR COMPATIBLE TOD TRI - VECTOR ENERGY METER AS PER CATEGORY - 'C' OF IS: 15959 / 2011 (WITH LATEST AMENDMENTS UPTO DATE) FOR DTC ENERGY ACCOUNTING AND AUDIT PURPOSE

9.00 MD RESET

The meter shall have following MD resetting options.

- i) Communication driven reset;
- ii) Manual resetting arrangement with sealing facility;
- iii) Automatic reset at the end of certain predefined period (say, end of the month) - This option shall be blocked by default and made programmable through hand held terminal / CMRI for the actual date required.

10.00 TAMPER AND FRAUD MONITORING FEATURES

10.01 ANTI TAMPER FEATURES

The meter shall detect and correctly register energy only in forward direction under following tamper conditions:

- (i) Change of phase sequence: The meter accuracy shall not be affected by change of phase sequence. It shall maintain the desired accuracy in case of reversal of phase sequence.
- (ii) Reversal of line and load terminals: Even on interchanging the load and line wires, the meter shall register correct energy passing through the meter. The meter shall also display the energy recorded in reverse mode separately.
- (iii) Drawing of current through local Earth: the meter shall register accurate energy even if load is drawn partially or fully through a local earth.
- (iv) The three phase meter shall continue to work even without neutral.
- (v) The three phase meter shall work in absence of any two phases or any one phase and neutral i.e. it shall work on any one phase wire and neutral or any two phases to record relevant energy to record relevant energy.
- (vi) The meter shall work without earth.
- (vii) The potential link shall not be provided.
- (viii) Visual indication shall be provided to safeguard against wrong connections to the meter terminals.
- (ix) The meter shall be immune to the external magnetic field (AC / DC / Permanent) upto 0.2 Tesla. If the accuracy of the meter gets affected under the influence of magnetic field more than 0.2 Tesla, then the same shall be recorded as magnetic tamper event with date & time stamping and the meter shall record Energy

TECHNICAL SPECIFICATION OF LT AC THREE PHASE, FOUR WIRE -/5 AMPS CT OPERATED FULLY STATIC AMR COMPATIBLE TOD TRI - VECTOR ENERGY METER AS PER CATEGORY - 'C' OF IS: 15959 / 2011 (WITH LATEST AMENDMENTS UPTO DATE) FOR DTC ENERGY ACCOUNTING AND AUDIT PURPOSE

considering the maximum value current (I_{max}) at ref. voltage and unity PF in all the three phases.

- (x) If, somehow the voltage circuit of one / two / all phase(s) of meter gets disconnected on its own due to faults in LT distribution network, the meter shall record the energy of that phase at V_{ref} , current available in that phase & UPF.
- (xi) The meter shall remain immune for the test of electromagnetic HF/RF defined under clause no. 5.5.4 of the CBIP tech report 304 and the test no. 4.0 for EMI/EMC of IS 14697:1999 amended up to date. For any higher signals than the present standards and MSEDCL technical specifications indicated above, if the accuracy of meter gets affected, it shall record energy considering meters maximum current(I_{max}), reference voltage & U.P.F. during such tampering events for defined period of 7 days. The same shall log the event with date and time stamping. The same shall be displayed in the scrolling mode. After that meter should record normal energy consumption.
- (xii) The meter shall not be affected by any remote device.

10.02 **TAMPER EVENTS**

- 10.02.01 The meter shall work satisfactorily under presence of various influencing conditions like External Magnetic Field, Electromagnetic Field, Radio Frequency Interference, Harmonic Distortion, Voltage / Frequency Fluctuations and Electromagnetic High Frequency Fields, etc. as per relevant IS.
- 10.02.02 The meter shall record the occurrence and restoration of tamper events of current, voltages, kWh, power factor, event code, date & time etc. listed in Table 32 to 37 of IS: 15959 / 2011.
- 10.02.03 In the event the meter is forcibly opened, even by 2 to 4 mm variation of the meter cover, same shall be recorded as tamper event with date & time stamping as per table 37 of IS: 15959 / 2011 and the meter shall continuously display that the cover has been tampered.
- 10.02.04 In the event the meter is tampered by remote control device (Jammer) same shall be recorded on Tamper event with date & time stamping with permanent indication as "EI/EC tp" on display which will indicate in auto scroll mode.
- 10.02.05 The detection of the tamper event shall be registered in the tamper event register.

The no. of times the tampering has been done shall also be registered in the meter.

TECHNICAL SPECIFICATION OF LT AC THREE PHASE, FOUR WIRE -/5 AMPS CT OPERATED FULLY STATIC AMR COMPATIBLE TOD TRI - VECTOR ENERGY METER AS PER CATEGORY - 'C' OF IS: 15959 / 2011 (WITH LATEST AMENDMENTS UPTO DATE) FOR DTC ENERGY ACCOUNTING AND AUDIT PURPOSE

10.02.06 Tamper details shall be retrieved by authorized personnel through either of the following:

(i) HHU.

(ii) Remote access through suitable communication network.

10.02.07 Minimum 200 numbers of events (occurrences & restoration with date & time) shall be available in the meter memory.

The recording of abnormal events shall be on FIFO basis.

All the information of data shall be made available in simple & easy to understand format.

10.03 The threshold values for various tampers are as below.

Sr. No.	Description	Occurrence (With Occ. Time 5 min.)	Restoration (With Rest. Time 5 min.)
1.	PT link Missing (Missing potential)	< 50% of Vref and current in that phase is > 5% of Ib	> 50% of Vref
2.	Over voltage in any phase	> 115 % of Vref	<115 % of Vref
3.	Low voltage in any phase	< 70 % of Vref	> 70 % of Vref
4.	Voltage Unbalance	> 10 % Vref	< 10 % Vref
5.	CT reverse	--	--
6.	CT Open	Zero Amps in one or two phase and current in at least 1 phase is > 5% of Ib for 15 minutes	> 3 % Ib in the tampered phase for 15 min
7.	Current Unbalance	> 30 % *I _{ref} for 15 min	< 30 % *I _{ref} for 15 min
8.	Current Bypass	> 50 % Ib for 15 min	< 30 % Ib for 15 min
9.	Over Current in any Phase	> 120 % Ib	< 120 % Ib

TECHNICAL SPECIFICATION OF LT AC THREE PHASE, FOUR WIRE -/5 AMPS CT OPERATED FULLY STATIC AMR COMPATIBLE TOD TRI - VECTOR ENERGY METER AS PER CATEGORY - 'C' OF IS: 15959 / 2011 (WITH LATEST AMENDMENTS UPTO DATE) FOR DTC ENERGY ACCOUNTING AND AUDIT PURPOSE

10.	Influence of permanent magnet or AC/ DC electromagnet / permanent magnet	Immediate	1 minute after removal
11.	Neutral Disturbance	--	--
12.	Power failure	Immediate	Immediate
13.	Very Low PF	--	--
14.	Meter Cover Opening	(2 to 4 mm) Immediate (Occurance only)	
15.	EMI/EMC Tamper	Immediate	Restoration of energy recording at the end of 'ON' 7 days
11.00	Q U * A	Higher of 3 phase currents shall be taken as reference for this purpose.	

NTITIES TO BE MEASURED & DISPLAYED

The meter shall be capable of measuring and displaying the following electrical quantities within specified accuracy limits for polyphase balanced or unbalanced loads:

- Instantaneous Parameters such as phase and line voltages, currents, power factors, overall kVA, kW, kVA_r, power factor, frequency etc. as per details given in the table below and IS: 15959 / 2011.
- Block Load Profile Parameters such as kVAh / kWh / kVA_rh (lag / lead) / Maximum Demand (MD) in kW / kVA / power factor / phase and line voltages / currents etc. as per details given in the table below and IS: 15959 / 2011.
- Billing Profile Parameters such as cumulative energy kWh / cumulative kVAh / cumulative energy kVA_rh, etc. as per details given in the table below and IS: 15959 / 2011.

In addition to above, the meter shall also record the Name plate details, programmable parameters (readable as profile), occurrence and restoration of tamper events along with the parameters (Table 30, 31 and 32, 33, 34, 35, 36, 37 & 39 respectively of IS: 15959 / 2011.

TECHNICAL SPECIFICATION OF LT AC THREE PHASE, FOUR WIRE -/5 AMPS CT OPERATED FULLY STATIC AMR COMPATIBLE TOD TRI - VECTOR ENERGY METER AS PER CATEGORY - 'C' OF IS: 15959 / 2011 (WITH LATEST AMENDMENTS UPTO DATE) FOR DTC ENERGY ACCOUNTING AND AUDIT PURPOSE

Detail of category wise parameters requirement suitable for Distribution Transformer CENTRE metering is given in following tables of IS: 15959 / 2011.

Category C	Parameter group	Annexure Table No.
LT AC Distribution Transformer CENTRE Energy Meters	Instantaneous parameters	27
	Block Load Profile parameters	28
	Billing Profile Parameters	29
	Name Plate details	30
	Programmable Parameters	31
	Event Conditions	32 to 37
All logging parameters for each of the event condition for 3 Φ / 4W	Capture parameters for event (Event Log Profile)	39

12.00 DISPLAY OF MEASURED VALUES

12.01 DISPLAY INDICATORS

The supply indication shall be displayed permanently by LED / LCD as a minimum and shall be visible from the front of the meter. In case of non available of voltage to any phase(s), the LEDs of that particular phase shall stop glowing or those particular indicator(s) shall start blinking on the LCD display of meter.

12.02 The permanently backlit display shall show relevant information about the parameters to be displayed. The corresponding non-volatile memory shall have a minimum retention time of 10 years. In the case of multiple values presented by a single display, it shall be possible to display the content of all relevant memories. When displaying the memory, the identification of each parameter applied shall be possible. The principal unit for the measured values shall be the kilowatt-hour kWh for active energy, kVArh for reactive energy and kVAh for apparent energy.

12.03 The meter shall have 6 digits (with +/- indication) parameter identifier, permanently backlit Liquid Crystal Display (LCD) with wide viewing angle. The size of digit shall be minimum 10x5 mm. The decimal units shall not be displayed in auto scroll mode. However it shall be

TECHNICAL SPECIFICATION OF LT AC THREE PHASE, FOUR WIRE -/5 AMPS CT OPERATED FULLY STATIC AMR COMPATIBLE TOD TRI - VECTOR ENERGY METER AS PER CATEGORY - 'C' OF IS: 15959 / 2011 (WITH LATEST AMENDMENTS UPTO DATE) FOR DTC ENERGY ACCOUNTING AND AUDIT PURPOSE

displayed in push button mode or alternate mode for high resolution display for testing. Auto display cycling push button is required with persistence time of 9 Seconds. LCD shall be suitable for temperature withstand of 70⁰ C; the adequate back up arrangement for storing of energy registered at the time of power interruption shall be provided.

12.04 The meters shall be pre-programmed for following details.

- a) Voltage Rating: 415 V Ph-Ph
- b) CT Ratio: -/5 Amps
- c) MD Integration Period is 30 Minutes real time based.
- d) Average power factor with 2 decimal digits shall be displayed.
- e) The meter shall Auto reset kVAMD at 24.00 Hrs. of last day of the month as per clause 9.00 (iii) and this value shall be stored in the memory along with the cumulative kWh reading.
- f) The array of data to be retained inside the meter memory shall be for the last 45 days for a capture period of 30 minutes. Load survey data shall be first in first out basis (FIFO).
- g) The display of various electrical parameters in Normal Mode & Alternate mode shall be as per table 27 & 29 (except 8 & 9) of IS: 15959 / 2011 in the sequence given as below. Display other than specified shall be blocked. The scroll period for auto scroll shall be 9 secs.

SR. NO.	PARAMETERS
A.	NORMAL DISPLAY (DEFAULT DISPLAY)
1.	LCD Test
2.	Real Time Clock – Date & Time
3.	Cumulative Energy – kWh
4.	Cumulative Energy – kWh - TOD Zone A (TZ1)
5.	Cumulative Energy – kWh - TOD Zone B (TZ2)
6.	Cumulative Energy – kWh - TOD Zone C (TZ3)
7.	Cumulative Energy – kWh - TOD Zone D (TZ4)
8.	Cumulative Energy – kVAh

TECHNICAL SPECIFICATION OF LT AC THREE PHASE, FOUR WIRE -/5 AMPS CT OPERATED FULLY STATIC AMR COMPATIBLE TOD TRI - VECTOR ENERGY METER AS PER CATEGORY - 'C' OF IS: 15959 / 2011 (WITH LATEST AMENDMENTS UPTO DATE) FOR DTC ENERGY ACCOUNTING AND AUDIT PURPOSE

9.	Cumulative Energy – kVAh - TOD Zone A (TZ1)
10.	Cumulative Energy – kVAh - TOD Zone B (TZ2)
11.	Cumulative Energy – kVAh - TOD Zone C (TZ3)
12.	Cumulative Energy – kVAh – TOD Zone D (TZ4)
13.	Cumulative Energy – kVARh - Lag
14.	Cumulative Energy – kVARh - Lead
15.	Apparent power, kVA
16.	MD - kVA – TOD Zone A (TZ1)
17.	MD - kVA – TOD Zone B (TZ2)
18.	MD - kVA – TOD Zone C (TZ3)
19.	MD - kVA – TOD Zone D (TZ4)
20.	Three Phase Power Factor - PF
21.	Meter Cover Opening – Occurance with date and time.
22.	Cumulative Tamper Count
23.	Cumulative programming count
B.	ON DEMAND DISPLAY (ALTERNATE MODE)
1.	Real Time Clock - Date & Time
2.	Billing date
3.	Voltage – V_{RN}
4.	Voltage – V_{YN}
5.	Voltage – V_{BN}
6.	Current – I_R
7.	Current – I_Y
8.	Current – I_B

TECHNICAL SPECIFICATION OF LT AC THREE PHASE, FOUR WIRE -/5 AMPS CT OPERATED FULLY STATIC AMR COMPATIBLE TOD TRI - VECTOR ENERGY METER AS PER CATEGORY - 'C' OF IS: 15959 / 2011 (WITH LATEST AMENDMENTS UPTO DATE) FOR DTC ENERGY ACCOUNTING AND AUDIT PURPOSE

9.	Last date & time of MD kVA reset
10.	High resolution kWh (For Testing)
11.	Rising MD with remaining time up to EOI (For calibration)
12.	M1 MD - kVA – TOD Zone A (TZ1)
13.	M1 MD - kVA – TOD Zone B (TZ2)
14.	M1 MD - kVA – TOD Zone C (TZ3)
15.	M1 MD - kVA – TOD Zone D (TZ4)
16.	M2 MD - kVA – TOD Zone A (TZ1)
17.	M2 MD - kVA – TOD Zone B (TZ2)
18.	M2 MD - kVA – TOD Zone C (TZ3)
19.	M2 MD - kVA – TOD Zone D (TZ4)
20.	Signed Power Factor – R Phase
21.	Signed Power Factor – Y Phase
22.	Signed Power Factor – B Phase
23.	Frequency
24.	Number of MD – kVA reset
25.	Last Tamper Event with date and time.
26.	Signed active power, kW (+ Forward; – Reverse)
27.	Signed reactive power, kVAr (+ Lag; – Lead)
28.	Number of power failures
29.	Cumulative power failure duration
30.	Cumulative billing count

TECHNICAL SPECIFICATION OF LT AC THREE PHASE, FOUR WIRE -/5 AMPS CT OPERATED FULLY STATIC AMR COMPATIBLE TOD TRI - VECTOR ENERGY METER AS PER CATEGORY - 'C' OF IS: 15959 / 2011 (WITH LATEST AMENDMENTS UPTO DATE) FOR DTC ENERGY ACCOUNTING AND AUDIT PURPOSE

- h) Other kVA MD values shall be available in reset backup data for 6 months.
- i) The meter display shall return to Default Display mode (mentioned above) if the 'Push button' is not operated for 15 seconds.

13.00 BILLING DATA, BILLING HISTORY & BLOCK LOAD SURVEY

13.01 BILLING DATA

The billing data shall be as per table 29 of Annex E of IS: 15959 / 2011 and is summarised as below.

SR. NO.	BILLING PARAMETERS
1.	Billing Date
2.	System Power Factor for Billing Period
3.	Cumulative Energy – kWh
4.	Cumulative Energy – kWh - TOD Zone A (TZ1)
5.	Cumulative Energy – kWh - TOD Zone B (TZ2)
6.	Cumulative Energy – kWh - TOD Zone C (TZ3)
7.	Cumulative Energy – kWh - TOD Zone D (TZ4)
8.	Cumulative Energy – kVArh - Lag
9.	Cumulative Energy – kVArh - Lead
10.	Cumulative Energy – kVAh
11.	Cumulative Energy – kVAh - TOD Zone A (TZ1)
12.	Cumulative Energy – kVAh – TOD Zone B (TZ2)
13.	Cumulative Energy – kVAh – TOD Zone C (TZ3)
14.	Cumulative Energy – kVAh – TOD Zone D (TZ4)
15.	MD – kVA with occurrence date & time
16.	MD – kVA – TOD Zone A (TZ1) with occurrence date & time

TECHNICAL SPECIFICATION OF LT AC THREE PHASE, FOUR WIRE -/5 AMPS CT OPERATED FULLY STATIC AMR COMPATIBLE TOD TRI - VECTOR ENERGY METER AS PER CATEGORY - 'C' OF IS: 15959 / 2011 (WITH LATEST AMENDMENTS UPTO DATE) FOR DTC ENERGY ACCOUNTING AND AUDIT PURPOSE

17.	MD – kVA – TOD Zone B (TZ2) with occurrence date & time
18.	MD – kVA – TOD Zone C (TZ3) with occurrence date & time
19.	MD – kVA – TOD Zone D (TZ4) with occurrence date & time

13.02 BILLING HISTORY

The meter shall have sufficient non-volatile memory for recording history of billing parameters for last 6 months.

13.03 BLOCK LOAD SURVEY:

The Block Load survey data shall be logged on non time based basis, i.e. if there is no power for more than 24 hours, the day shall not be recorded. Whenever meter is taken out and brought to laboratory, the load survey data shall be retained for the period of actual use of meter. This load survey data can be retrieved as and when desired and load profiles shall be viewed graphically / analytically with the help of meter application software. The meter application software shall be capable of exporting / transmitting these data for analysis to other user software in spreadsheet format.

The Block Load survey data shall be for specified parameters as per table 28 for 3 Φ /4W system of measurement with NEUTRAL as reference point of Annex E of IS: 15959 / 2011. The specified parameters are summarised as below.

SR. NO.	BLOCK LOAD SURVEY PARAMETERS
1.	Real time clock, date and time
2.	Current, I _R
3.	Current, I _Y
4.	Current, I _B
5.	Voltage, V _{RN}
6.	Voltage, V _{YN}
7.	Voltage, V _{BN}
8.	Block energy, kWh

TECHNICAL SPECIFICATION OF LT AC THREE PHASE, FOUR WIRE -/5 AMPS CT OPERATED FULLY STATIC AMR COMPATIBLE TOD TRI - VECTOR ENERGY METER AS PER CATEGORY - 'C' OF IS: 15959 / 2011 (WITH LATEST AMENDMENTS UPTO DATE) FOR DTC ENERGY ACCOUNTING AND AUDIT PURPOSE

9.	Block energy, kVArh (lag)
10.	Block energy, kVArh (lead)
11.	Block energy, kVAh

14.00 DEMONSTRATION

The purchaser reserves the right to ask to give the demonstration of the equipment offered at the purchaser's place.

15.00 PERFORMANCE UNDER INFLUENCE QUANTITIES

The meters' performance under influence quantities shall be governed by IS: 14697 / 1999 (amended upto date) and CBIP Tech. Report 304; the accuracy of meter shall not exceed the permissible limits of accuracy as per standard IS: 14697 / 1999 (amended upto date). In case of conflict, the priority shall be as per clause no. 5.00 of this specification.

16.00 HAND HELD UNIT (HHU)

16.01 To enable local reading of meters data, a DLMS compliant HHU shall be provided.

16.02 The HHU shall be as per specification given in Annex J of IS: 15959 / 2011.

16.03 It shall be compatible to the DLMS compliant energy meters that are to be procured / supplied on the basis of this specification.

16.04 The HHU shall be supplied by the meter manufacturer along with the meter free of cost in the ratio of one for each 100 Nos. meters supplied including user manual and a set of direct communication cords for data downloading to the Laptop or PC for each HHU.

16.05 There shall be a provision for auto power save on HHU, which shall force the instrument in the power saving mode in case of no-activity within 5 minutes.

The data shall not be lost in the event the batteries are drained or removed from the HHU.

16.06 The HHU shall have a memory capacity of 8 MB SRAM (Static RAM) with battery backup & upgradeable and BIOS / OS on FLASH / EEPROM Memory of 256 KB.

TECHNICAL SPECIFICATION OF LT AC THREE PHASE, FOUR WIRE -/5 AMPS CT OPERATED FULLY STATIC AMR COMPATIBLE TOD TRI - VECTOR ENERGY METER AS PER CATEGORY - 'C' OF IS: 15959 / 2011 (WITH LATEST AMENDMENTS UPTO DATE) FOR DTC ENERGY ACCOUNTING AND AUDIT PURPOSE

- 16.07 The manufacturer / supplier shall modify the compatibility of HHU with the meter and the base computer system due to any change in language or any other reasons at their own cost within guarantee period.
- 16.08 The CMRI shall be type tested for (a) Tests of Mechanical requirement such as Free fall test, Shock Test, Vibration test, (b) Tests of Climatic influences such as Tests of Protection against Penetration of Dust and Water (IP 6X), Dry Heat test, Cold Test, Damp Heat Cyclic Test, (c) Tests for Electromagnetic Compatibility (EMC), (d) Test of Immunity to Electromagnetic HF Fields and (e) Radio Interference Measurement.
- 16.09 The equipments offered shall be fully type tested at approved laboratory by National Accreditation Board for Testing and Calibration Laboratories (NABL) as per relevant standards within last 5 years from the date of opening of tender & the type test reports shall be enclosed with the offer.

17.00 COMPUTER SOFTWARE.

- 17.01 For efficient and speedy recovery of data downloaded through HHU on base computer, licensed copies of base computer software shall have to be supplied free of cost. This software will be used at number of places up to Division level. As many copies of base computer software as required up to Division level shall be provided by Supplier.
- 17.02 The meter shall be capable to communicate directly with laptop computer. Base Computer Software shall be suitable for all types of printers such as dot matrix, inkjet, desk jet and laser printers.
- 17.03 The Base Computer Software shall be "Windows" based & user friendly. The data transfer shall be highly reliable and fraud proof (No editing shall be possible on base computer as well as HHU by any means). The software shall have capability to convert all the data into ASCII format/XML format as per MIOS.
- 17.04 The Base Computer Software should be password protected.
- 17.05 The total time taken for downloading Billing, Tamper and Load Survey Data for 45 days shall be less than or equal to 5 minutes.
- 17.06 Downloading time of only Billing data shall be less than or equal to 20 secs.
- 17.07 The BCS software shall create one single file for the uploaded data, e.g. if CMRI contains the meter readings of, say, 2,000 consumer meters & the said data is uploaded to BCS, then the BCS shall create a single file containing separate records for each consumer meter reading in ASCII format or XML file as per MIOS for Individual meter reading.

TECHNICAL SPECIFICATION OF LT AC THREE PHASE, FOUR WIRE -/5 AMPS CT OPERATED FULLY STATIC AMR COMPATIBLE TOD TRI - VECTOR ENERGY METER AS PER CATEGORY - 'C' OF IS: 15959 / 2011 (WITH LATEST AMENDMENTS UPTO DATE) FOR DTC ENERGY ACCOUNTING AND AUDIT PURPOSE

- 17.08 Also there shall be a provision to give filenames while creating the file.
- 17.09 Meter manufacturer should also need to submit convert API (API3) as per MIOS universal standard along with Base Computer System free of cost. This API should be capable of converting both data i.e AMR data collected from read API (API1) & MRI data collected from CMRI.
- 17.10 As and when the meter manufacturer releases new or latest or advanced versions of meter hardware / firmware / software (such as Base Computer System, API3 etc.) , the same shall be made available to purchaser immediately on the release date free of cost. The latest version shall support all existing hardware / meters in the field. The meter manufacturer should also provide support for changes and integration of Base Computer System & API3.
- 17.11 The meter samples shall be tested by our IT Department for the time required for downloading the data as per specifications and as confirmed by the bidder.
- 17.12 Downloading software shall also be provided so as to install on our Laptop for downloading data directly on Laptop from meter without the use of HHU.
- 17.13 The software provided on laptop or PC shall be compatible to read the data from USB drive and for that purpose a sample cable (1 No.) shall be provided with USB termination.
USB being the de-facto standard, this is the requirement.
- 17.14 MSEDCL is procuring large quantity of meters. As such manufacturer have to depute Hardware Engineers and Software Engineers on call basis, who shall have thorough knowledge of meter hardware / software used for downloading and converting so as to discuss the problems, if any, or new development in the hardware / software with Chief Engineer, MM Cell / Chief General Manager (IT), MSEDCL, Prakashgad, Bandra (E), Mumbai – 400051 without any additional charge.

18.00 CONNECTION DIAGRAM AND TERMINAL MARKINGS

The connection diagram of the meter shall be clearly shown on inside portion of the terminal cover and shall be of permanent nature. Meter terminals shall also be marked and this marking shall appear in the above diagram. The diagram & terminal marking on sticker shall not be allowed.

19.00 NAME PLATE AND MARKING OF METERS

Meter shall have a name plate clearly visible, effectively secured against removal and indelibly and distinctly marked with all essential

TECHNICAL SPECIFICATION OF LT AC THREE PHASE, FOUR WIRE -/5 AMPS CT OPERATED FULLY STATIC AMR COMPATIBLE TOD TRI - VECTOR ENERGY METER AS PER CATEGORY - 'C' OF IS: 15959 / 2011 (WITH LATEST AMENDMENTS UPTO DATE) FOR DTC ENERGY ACCOUNTING AND AUDIT PURPOSE

particulars as per relevant standards. Meter Serial Number shall be Bar Coded along with numeric number. The size of bar coded number shall not be less than 35x5 mm. The manufacturer's meter constant shall be marked on the name plate. Meter serial number & bar code on sticker will not be allowed. In addition to the requirement as per IS, following shall be marked on the name plate.

- (i) Purchase order No & date
- (ii) Month and Year of manufacture
- (iii) Name of purchaser, i.e. MSEDCL
- (iv) Guarantee Five Years
- (v) ISI mark
- (vi) Category of Meter: **Category C – LT DTC Meter**. The lettering shall be bold in 3 mm font.

20.00 TESTS

20.01 TYPE TESTS

The meter offered shall have successfully passed all type tests described in the IS: 14697 / 1999 (amended upto date), external AC / DC magnetic influence tests as per CBIP Tech Report 304 with latest amendments and the meter data transfer and communication capability as per IS: 15959 / 2011.

The Type Test Reports shall clearly indicate the constructional features of the type tested meter. Separate type Test Reports for each offered type of meter shall be submitted.

The Type Test Certificate as per IS: 14697 / 1999 (amended upto date) shall be submitted along with the offer. The Type Test certificate carried out during last three years prior to the date of offer shall be valid.

The Type test certificate of metering protocol as per IS: 15959 / 2011 shall be submitted before commencement of supply and the same shall not be more than 36 months old at the time of submission.

All the type test reports shall be got approved from Chief Engineer, MSEDCL, Material Management Cell, Prakashgad, Mumbai.

All the Type Tests specified in the technical specifications and as per IS: 14697 / 1999 shall be carried out at laboratories which are accredited by the National Board of Testing and Calibration Laboratories (NABL) of Govt. of India such as ERDA, ERTL, CPRI, etc. Type Test Reports conducted in manufacturers own laboratory and certified by testing institute shall not be acceptable.

TECHNICAL SPECIFICATION OF LT AC THREE PHASE, FOUR WIRE -/5 AMPS CT OPERATED FULLY STATIC AMR COMPATIBLE TOD TRI - VECTOR ENERGY METER AS PER CATEGORY - 'C' OF IS: 15959 / 2011 (WITH LATEST AMENDMENTS UPTO DATE) FOR DTC ENERGY ACCOUNTING AND AUDIT PURPOSE

Further Purchaser shall reserve the right to pick up energy meters at random from the lots offered and get the meter tested at third party lab i.e. CPRI / agencies listed at Appendix - C of Latest - standardization of AC static electrical energy meters - CBIP publication No. 304 / NPL / CQAL / ERTL / ERDA at the sole discretion of the purchaser at the purchaser's cost. The supplier shall have no right to contest the test results of the third party lab or for additional test and has to replace / take corrective action at the cost of the supplier. For this purpose, the tenderer shall quote unit rates for carrying out each type test. However, such unit rates will not be considered for evaluation of the offer.

Make & type of major components used in the type-tested meter shall be indicated in the QAP.

Additional acceptance test shall be submitted before commencement of supply & get approved from CE (MMC).

20.02 ACCEPTANCE & ROUTINE TESTS

Criteria for selection for such tests and performance requirements shall be as per IS: 14697 / 1999 (Amended upto date).

ALL acceptance tests as per IS: 14697 / 1999 shall be carried out on the meter.

All acceptance tests as per IS: 11731 (Part-2)/ 1986 shall be carried out on the meter body, heat deflection test as per ISO:75, glow wire test as per the IS:11000 (part 2/SEC-1) 1984 OR IEC PUB 60695-2-12, Ball pressure test as per IEC--60695-10-2 and Flammability Test as per UL 94 or as per IS: 11731 (Part-2)/ 1986.

20.03 ROUTINE TESTS

All routine tests as per IS: 14697 / 1999 shall be carried out on all the meters.

20.04 ADDITIONAL ACCEPTANCE TESTS

The following additional tests shall be carried out in addition to the acceptance tests specified in IS: 14697 / 1999 (amended up to date)

(a) TRANSPORTATION TEST

At least 50% of the samples of the meters be tested for error at I_{max} , I_b and 5% I_b at unity power factor and 50% I_{max} and 10% I_b at 0.5 lagging Power Factor besides checking them for starting current. This test shall be conducted on ready to install meter i.e. meter cover ultrasonically welded & sealed. After recording these errors, the meters be put in their normal packing and transported for at

TECHNICAL SPECIFICATION OF LT AC THREE PHASE, FOUR WIRE -/5 AMPS CT OPERATED FULLY STATIC AMR COMPATIBLE TOD TRI - VECTOR ENERGY METER AS PER CATEGORY - 'C' OF IS: 15959 / 2011 (WITH LATEST AMENDMENTS UPTO DATE) FOR DTC ENERGY ACCOUNTING AND AUDIT PURPOSE

least 50 km in any transport vehicle such as pick up van, Jeep, etc. on uneven rural roads and then re-tested at all these loads after the transportation. The variation in errors recorded before and after transportation shall not exceed 1% at higher loads and 1.5% at loads below I_b .

(b) OTHER ACCEPTANCE TESTS

- i) The meter shall withstand continuously for a period of at least 5 minutes at a voltage of 440 V between phase and neutral without damage / problems.
- ii) Meters shall be tested for tamper conditions as stated in this specification.
- iii) Glow wire testing for poly-carbonate body.
- iv) Power consumption tests shall be carried out.
- v) The meter shall comply all the tests for external AC / DC magnetic field as per CBIP Tech Report 304 with latest amendments.

Moreover, the magnetic influence test for permanent magnet of 0.5 T for minimum period of 15 minutes shall be carried out by putting the magnet on the meter body. If, during the test, the accuracy of the meter gets affected, then the same shall be recorded as magnetic tamper event with date & time stamping and the meter shall record energy considering I_{max} and reference voltage at unity power factor in all the three phases. After removal of magnet, meter shall be subjected to accuracy test as per IS: 14697 / 1999 (amended upto date). No deviation in error is allowed in the class index as per IS: 14697 / 1999 (amended upto date) & this specification.

- vi) The meter shall withstand impulse voltage at 10 kV.
- vii) The meter shall remain immune for the test of electromagnetic HF/RF defined under clause no. 5.5.4 of the CBIP tech report 304 and the test no. 4.0 for EMI/EMC of IS 14697:1999 amended up to date. For any higher signals than the present standards and MSEDCL technical specifications indicated above, if the accuracy of meter gets affected, it shall record energy considering meters maximum current, reference voltage & U.P.F. during such tampering events for defined period of 7 days. The same shall log the event with date and time stamping. The same shall be displayed in the scrolling mode. After that meter should record normal energy consumption.

TECHNICAL SPECIFICATION OF LT AC THREE PHASE, FOUR WIRE -/5 AMPS CT OPERATED FULLY STATIC AMR COMPATIBLE TOD TRI - VECTOR ENERGY METER AS PER CATEGORY - 'C' OF IS: 15959 / 2011 (WITH LATEST AMENDMENTS UPTO DATE) FOR DTC ENERGY ACCOUNTING AND AUDIT PURPOSE

The tests 20.04 (b) (i) to (iv) shall be carried out at factory for each inspected lot at the time of pre dispatch inspection.

The tests 20.04 (b) (v) , (vi) & (vii) shall be carried out on one sample from first lot as per procedure laid down in IS: 14697 / 1999 (amended up to date), CBIP Tech Report 304 (with latest amendments). The test report shall be got approved from Chief Engineer, Material Management Cell before commencement of supply.

(c) For influence quantities like, voltage variation, frequency variation, voltage unbalance etc. the limits of variation in percentage error shall be as per IS: 14697 / 1999 (amended up to date).

21.00 GUARANTEED TECHNICAL PARTICULARS

The tenderer shall furnish the particulars giving specific required details of meters in schedule 'A' attached. The offers without the details in Schedule 'A' stand rejected.

22.00 PRE-DESPATCH INSPECTIONS

All Acceptance tests and inspection shall be carried out at the place of manufacturer unless otherwise specially agreed upon by the manufacturer and purchaser at the time of purchases. The manufacturer shall offer to the inspector representing the purchaser all the reasonable facilities, free of charge, for inspection and testing, to satisfy him that the material is being supplied in accordance with this specification.

The MSEDCL's representative / Engineer attending the above testing shall carry out testing as per IS: 14697 / 1999 (amended up to date) & additional acceptance tests as per this specification and issue test certificate approval to the manufacturer and give clearance for dispatch.

The first lot of meter may be jointly inspected by the Executive Engineer, Testing Division & the Executive Engineer, Inspection Wing.

23.00 JOINT INSPECTION AFTER RECEIPT AT STORES (Random Sample Testing)

From each lot (lot means the total number of meters received in a Store out of inspected and approved lot by E.E.(IW) or purchaser's representative under one approval letter) of meters received at Stores, Store CENTRE. 5 sample meters shall be drawn (meters received in damage condition shall not be selected as samples) and these meters shall be tested by our Testing Engineer in presence of Supplier / Supplier's representative jointly for (i) no load condition, (ii) starting

TECHNICAL SPECIFICATION OF LT AC THREE PHASE, FOUR WIRE -/5 AMPS CT OPERATED FULLY STATIC AMR COMPATIBLE TOD TRI - VECTOR ENERGY METER AS PER CATEGORY - 'C' OF IS: 15959 / 2011 (WITH LATEST AMENDMENTS UPTO DATE) FOR DTC ENERGY ACCOUNTING AND AUDIT PURPOSE

Condition, (iii) limits of error test, (iv) repeatability of error test (v) tamper conditions and (vi) data downloading time as per this specification.

The 5 days advance intimation will be given to the supplier. If the supplier / supplier's representative fails to attend the joint inspection on the date informed, the testing will be carried out by our Testing Engineer in absence of supplier / suppliers' representative & results of RST shall be binding on supplier.

If the meters fail in above random sample testing, the lot will be rejected.

24.00 GUARANTEE

The meter & HHU supplied shall be guaranteed for a period of 66 months from the date of supply or 60 months from the date of commissioning, whichever is earlier. Bidders shall guarantee to replace free of cost the meters which are found defective / inoperative at the time of installation, or become inoperative / defective during guarantee period. Replacements shall be effected within one month from the date of intimation. If the defective meters are not replaced within the specified period above, MSEDCL shall recover an equivalent amount plus 15% supervision charges from any of the bills of the supplier.

25.00 PACKING

25.01 The meters & HHUs shall be suitably packed in order to avoid damage or disturbance during transit or handling. Each meter & HHU may be suitably packed in the first instance to prevent ingress of moisture and dust and then placed in a cushioned carton of a suitable material to prevent damage due to shocks during transit. The lid of the carton may be suitably sealed. A suitable number of sealed cartons may be packed in a case of adequate strength with extra cushioning, if considered necessary. The cases may then be properly sealed against accidental opening in transit. The packing cases may be marked to indicate the fragile nature of the contents.

25.02 The following information shall be furnished with the consignment:

- Name of the consignee
- Details of consignment
- Destination
- Total weight of the consignment
- Sign showing upper / lower side of the crate

TECHNICAL SPECIFICATION OF LT AC THREE PHASE, FOUR WIRE -/5 AMPS CT OPERATED FULLY STATIC AMR COMPATIBLE TOD TRI - VECTOR ENERGY METER AS PER CATEGORY - 'C' OF IS: 15959 / 2011 (WITH LATEST AMENDMENTS UPTO DATE) FOR DTC ENERGY ACCOUNTING AND AUDIT PURPOSE

- Sign showing fragility of the material
- Handling and unpacking instructions
- Bill of Materials indicating contents of each package & spare material

26.00 TENDER SAMPLE

Tenderer are required to submit 15 (Fifteen) nos. of sample meters and 1 (One) no. of sample HHU of offered type / item as per technical specifications from any one of the factories on or before the time & date stipulated for submission of offer for testing the sample meters in third party NABL Lab like ERDA, CPRI, CIPET, ERTL, etc. The offer of those eligible bidders shall only be considered if the sample passes the tests at NABL Lab. The results of NABL Lab shall not be disputed and same shall be binding on the bidder. The required information such as Manufacturer's Name or Trade Name, Sr. No., ISI Certification No., etc. shall be on stickers to be affixed on outer portion of sample meters being submitted along with the offer. Such information shall not be embossed or printed on any part of the sample meter.

Out of these, two samples shall be without Ultrasonic welding to confirm constructional features.

27.00 QUALITY CONTROL

The purchaser shall send a team of experienced engineers for assessing the capability of the firm for manufacturing of meters as per this specification. The team should be given all assistance and co-operation for inspection and testing at the bidder's works. 3 tender samples should be kept ready for assessing and testing. The tenderer has to give all facilities for carrying out the testing of these samples.

28.00 MINIMUM TESTING FACILITIES

28.01 Manufacturer shall possess fully computerized Meter Test Bench System for carrying out routine and acceptance Tests as per IS: 14697 / 1999 (amended up to date). In addition, this facility shall produce Test Reports for each and every meter. The bidder shall have fully automatic Test Bench having in-built constant voltage, current and frequency source with facility to select various loads automatically and print the errors directly. The list of testing equipments shall be enclosed. The manufacturer shall have the necessary minimum testing facilities for carrying out the following tests:

TECHNICAL SPECIFICATION OF LT AC THREE PHASE, FOUR WIRE -/5 AMPS CT OPERATED FULLY STATIC AMR COMPATIBLE TOD TRI - VECTOR ENERGY METER AS PER CATEGORY - 'C' OF IS: 15959 / 2011 (WITH LATEST AMENDMENTS UPTO DATE) FOR DTC ENERGY ACCOUNTING AND AUDIT PURPOSE

Sr. No.	Name of Test
(1)	A.C. Voltage test
(2)	Insulation Resistance Test
(3)	Test of Accuracy Requirement
(4)	Test on limits of errors
(5)	Test on meter constant
(6)	Test of starting condition
(7)	Test of no-load condition
(8)	Repeatability of error test
(9)	Test of power Consumption
(10)	Vibration test
(11)	Shock Test
(12)	Transportation Test
(13)	Tamper conditions - as per MSEDCL specification
(14)	Glow Wire Test
(15)	Long duration test
(16)	Flammability Test
(17)	The manufacturer shall have duly calibrated RSS meter of class 0.1 accuracy

28.02 METER SOFTWARE

The Bidders will have to get appraised & obtain CMMI – Level III within one year from date of letter of award.

TECHNICAL SPECIFICATION OF LT AC THREE PHASE, FOUR WIRE -/5 AMPS CT OPERATED FULLY STATIC AMR COMPATIBLE TOD TRI - VECTOR ENERGY METER AS PER CATEGORY - 'C' OF IS: 15959 / 2011 (WITH LATEST AMENDMENTS UPTO DATE) FOR DTC ENERGY ACCOUNTING AND AUDIT PURPOSE

28.03 Notwithstanding anything stated herein under, the Purchaser reserves the right to assess the capacity and capability of the bidder to execute the work, shall the circumstances warrant such assessment in the overall interest of the Purchaser.

29.00 MANUFACTURING PROCESS, ASSEMBLY, TESTING

29.01 Meters shall be manufactured using latest and 'state of the art' technology and methods prevalent in electronics industry. The meter shall be made from high accuracy and reliable surface mount technology (SMT) components. All inward flow of major components and sub assembly parts (CT, PT, RTCs / Crystal, LCDs, LEDs, power circuit electronic components, etc.) shall have batch and source identification. Multilayer 'PCB' assembly with 'PTH' (Plated through Hole) using surface mounted component shall have adequate track clearance for power circuits. SMT component shall be assembled using automatic 'pick-and-place' machines, Reflow Soldering oven, for stabilized setting of the components on 'PCB'. For soldered PCBs, cleaning and washing of cards, after wave soldering process is to be carried out as a standard practice. Assembly line of the manufacturing system shall have provision for testing of sub-assembled cards. Manual placing of components and soldering, to be minimized to items, which cannot be handled by automatic machine. Handling of 'PCB' with ICs / C-MOS components, to be restricted to bare minimum and precautions to prevent 'ESD' failure to be provided. Complete assembled and soldered PCB shall undergo functional testing using computerized Automatic Test Equipment.

Test points shall be provided to check the performance of each block / stage of the meter circuitry. RTC shall be synchronized with NPL time at the time of manufacture. Meters testing at intermediate and final stage shall be carried out with testing instruments, duly calibrated with reference standard, with traceability of source and date.

The manufacturer shall submit the list of plant and machinery along with the offer.

29.02 MANUFACTURING ACTIVITIES

Quality should be ensured at the following stages:

- (a) At PCB manufacturing stage each board shall be subjected to computerized bare board testing.
- (b) At insertion stage all components should under go computerized testing for conforming to design parameters and orientation.

TECHNICAL SPECIFICATION OF LT AC THREE PHASE, FOUR WIRE -/5 AMPS CT OPERATED FULLY STATIC AMR COMPATIBLE TOD TRI - VECTOR ENERGY METER AS PER CATEGORY - 'C' OF IS: 15959 / 2011 (WITH LATEST AMENDMENTS UPTO DATE) FOR DTC ENERGY ACCOUNTING AND AUDIT PURPOSE

- (c) Complete assembled and soldered PCB should under go functional testing using Automatic Test Equipments (ATEs)
- (d) Prior to final testing and calibration, all meters shall be subjected to ageing test (i.e. Meters shall be kept in ovens for 72 hours at 55°C temperature and atmospheric humidity under real life condition at it's full load current. After 72 hours meters shall work satisfactory to eliminate infant mortality.
- (e) The calibration of meters shall be done in-house.
- (f) The bidders shall submit the list of all imported & indigenous components separately used in meter along with the offer.
- (g) Bought out items: A detailed list of bought out items which are used in the manufacture of the meter shall be furnished indicating the name of firms from whom these items are procured. The bidder shall also give the details of quality assurance procedures followed by him in respect of the bought out items.
- (h) List of Plant and Machinery:

Sr. No.	List of Plant and Machinery used for Energy meter Production	
1	Fully automatic testing Bench with ICT for testing link less meters	Routine Testing and Calibration of Meters
2	Semi automatic testing Bench with MSVT	Routine Testing and Calibration of Meters
3	IR Tester	Insulation testing
4	HV Tester	Insulation testing
5	Error calculators	Error testing
6	Long duration Running test set ups	Reliability Testing
7	Reference Meters Class 0.01 accuracy	Error calculation
8	Ultrasonic welding Machines	Welding of meters

TECHNICAL SPECIFICATION OF LT AC THREE PHASE, FOUR WIRE -/5 AMPS CT OPERATED FULLY STATIC AMR COMPATIBLE TOD TRI - VECTOR ENERGY METER AS PER CATEGORY - 'C' OF IS: 15959 / 2011 (WITH LATEST AMENDMENTS UPTO DATE) FOR DTC ENERGY ACCOUNTING AND AUDIT PURPOSE

9	Automatic Pick and Place Machines	Automatic placing of SMT components
10	Solder Paste Printing Machine	SMT soldering
11	Soldering Furnace IR reflow	SMT soldering
12	PCB Scanner	For testing of PCBs
13	ATE functional tester	For testing of Components
14	Programmings and Program Loaders	Chip Programming Tools
15	CAD PCB designing setups	PCB designing
16	Furnace IR type for Hybrid Micro Circuits	resistance network and HMC manufacturing
17	Laser Trimming Machines	trimming of resistances for higher accuracy measurement
18	Wave Soldering Machines	Wave soldering of PCBs
19	Humidity Chamber	Accelerated testing for Life cycle
20	Dry Heat Test Chamber	Accelerated testing for Life cycle
21	Thermal Shock Chamber	Accelerated testing for Life cycle
22	PRO -E Mechanical Design Stations	Mechanical CAD stations
23	Spark Erosion Tool fabricating Machine	Tool fabrication and Die manufacturing
24	CNC wire Cut Tool Fabrication machine	Tool fabrication and Die manufacturing

TECHNICAL SPECIFICATION OF LT AC THREE PHASE, FOUR WIRE -/5 AMPS CT OPERATED FULLY STATIC AMR COMPATIBLE TOD TRI - VECTOR ENERGY METER AS PER CATEGORY - 'C' OF IS: 15959 / 2011 (WITH LATEST AMENDMENTS UPTO DATE) FOR DTC ENERGY ACCOUNTING AND AUDIT PURPOSE

25	CNC Milling Machine for composite tool fabrication	Tool fabrication and Die manufacturing
26	Injection Moulding Machine	Moulding of plastic parts
27	Vibration testing Machine	Vibration testing of Meters
28	Glow Wire Test machine	Testing of Plastic Material
29	Fast transient burst testing setup	Type testing of Meters
30	Short term over Current testing setup	Type testing of Meters
31	Magnetic and other tamper testing setups	Tamper Testing
32	Impulse Voltage Testing Setup	Type testing of Meters
33	Composite Environmental testing chambers	Type testing of Meters

30.00 QUALITY ASSURANCE PLAN

- 30.01 The tenderer shall invariably furnish QAP as specified in Annexure - I along with his offer. The QAP shall be adopted by him in the process of manufacturing.
- 30.02 Precautions taken for ensuring usage of quality raw material and sub component shall be stated in QAP.

31.00 COMPONENT SPECIFICATION

As per Annexure - II enclosed.

32.00 SCHEDULES

The tenderer shall fill in the following schedules, which are part and partial of the tender specification and offer. If the schedules are not submitted duly filled in with the offer, the offer shall be liable for rejection.

TECHNICAL SPECIFICATION OF LT AC THREE PHASE, FOUR WIRE -/5 AMPS CT OPERATED FULLY STATIC AMR COMPATIBLE TOD TRI - VECTOR ENERGY METER AS PER CATEGORY - 'C' OF IS: 15959 / 2011 (WITH LATEST AMENDMENTS UPTO DATE) FOR DTC ENERGY ACCOUNTING AND AUDIT PURPOSE

Schedule `A' Guaranteed and technical particulars. (As per GTP uploaded on e -tendering site)

Schedule `C' Tenderer Experience

The discrepancies if any between the specification and the catalogs and / or literatures submitted as part of the offer by the bidders, the same shall not be considered and representations in this regard shall not be entertained. If it is observed that there are deviations in the offer in Guaranteed Technical Particulars, then, such deviations shall be treated as deviations.

TECHNICAL SPECIFICATION OF LT AC THREE PHASE, FOUR WIRE -/5 AMPS CT OPERATED FULLY STATIC AMR COMPATIBLE TOD TRI - VECTOR ENERGY METER AS PER CATEGORY - 'C' OF IS: 15959 / 2011 (WITH LATEST AMENDMENTS UPTO DATE) FOR DTC ENERGY ACCOUNTING AND AUDIT PURPOSE

SCHEDULE - 'C'

TENDERER'S EXPERIENCE

Tenderer shall furnish here a list of similar orders executed / under execution for supply of LT AC CT Operated Static TOD Energy Meters of 100/5 Amps or 50/5 Amps rating by them to whom a reference may be made by purchaser in case he consider such a reference necessary.

Sr. No.	Name of client	Order No. & Date	Qty. Ordered	Qty. Supplied
------------	----------------	---------------------	-----------------	------------------

NAME OF FIRM _____

NAME & SIGNATURE OF TENDERER _____

DESIGNATION _____

DATE _____

TECHNICAL SPECIFICATION OF LT AC THREE PHASE, FOUR WIRE -/5 AMPS CT OPERATED FULLY STATIC AMR COMPATIBLE TOD TRI - VECTOR ENERGY METER AS PER CATEGORY - 'C' OF IS: 15959 / 2011 (WITH LATEST AMENDMENTS UPTO DATE) FOR DTC ENERGY ACCOUNTING AND AUDIT PURPOSE

ANNEXURE - I

QUALITY ASSURANCE PLAN

- A) The bidder shall invariably furnish the following information along with his bid, failing which his bid shall be liable for rejection. Information shall be separately given for individual type of material offered.
- i) Statement giving list of important raw materials, names of sub-suppliers for the raw materials, list of standards according to which the raw materials are tested. List of test normally carried out on raw materials in presence of Bidder's representative, copies of test certificates:
 - ii) Information and copies of test certificates as in (i) above in respect of bought out accessories.
 - iii) List of manufacturing facilities available.
 - iv) Level of automation achieved and list of areas where manual processing exists.
 - v) List of areas in manufacturing process, where stage inspections are normally carried out for quality control and details of such tests and inspections.
 - vi) List of testing equipment available with the bidder for final testing of equipment specified and test plan limitation. If any, vis-a-vis the type, special acceptance and routine tests specified in the relevant standards. These limitations shall be very clearly bought out in schedule of deviation from specified test requirements.
- B) The successful bidder shall within 30 days of placement of order, submit following information to the purchaser.
- i) List of raw materials as well as bought out accessories and the names of sub-suppliers selected from those furnished along with offers.
 - ii) Type test certificates of the raw materials and bought out accessories if required by the purchaser.
 - iii) Quality assurance plan (QAP) with hold points for purchaser's inspection.
The quality assurance plan and purchasers hold points shall be discussed between the purchaser and bidder before the QAP is finalized.
- C) The contractor shall operate systems which implement the following:
- i) Hold point: A stage in the material procurement or workmanship process beyond which work shall not proceed without the documental

TECHNICAL SPECIFICATION OF LT AC THREE PHASE, FOUR WIRE -/5 AMPS CT OPERATED FULLY STATIC AMR COMPATIBLE TOD TRI - VECTOR ENERGY METER AS PER CATEGORY - 'C' OF IS: 15959 / 2011 (WITH LATEST AMENDMENTS UPTO DATE) FOR DTC ENERGY ACCOUNTING AND AUDIT PURPOSE

approval of designated individuals organizations. The purchaser's written approval is required to authorise work to progress beyond the hold points indicated in quality assurance plans.

- ii) Notification point: A stage in the material procurement or workmanship process for which advance notice of the activity is required to facilitate witness. If the purchaser does not attend after receiving documented notification in accordance with the agreed procedures and with the correct period of notice then work may proceed.

D) The successful bidder shall submit the routine test certificates of bought out accessories and central excise passes for raw material at the time of routine testing if required by the purchaser and ensure that Quality Assurance program of the contractor shall consist of the quality systems and quality plans with the following details.

i) The structure of the organization.

- The duties and responsibilities assigned to staff ensuring quality of work.
- The system for purchasing taking delivery and verification of material.
- The system for ensuring quality workmanship.
- The system for retention of records.
- The arrangements for contractor's internal auditing.

A list of administration and work procedures required to achieve and verify contract's quality requirements these procedures shall be made readily available to the project manager for inspection on request.

ii) Quality Plans:

- An outline of the proposed work and programme sequence. The structure of the contractor's organization for the contract.
- The duties and responsibilities assigned to staff ensuring quality of work.
- Hold and notification points.
- Submission of engineering documents required by the specification.
- The inspection of materials and components on receipt. Reference to the contractor's work procedures appropriate to each activity.
- Inspection during fabrication/ construction.
- Final inspection and test.

TECHNICAL SPECIFICATION OF LT AC THREE PHASE, FOUR WIRE -/5 AMPS CT OPERATED FULLY STATIC AMR COMPATIBLE TOD TRI - VECTOR ENERGY METER AS PER CATEGORY - 'C' OF IS: 15959 / 2011 (WITH LATEST AMENDMENTS UPTO DATE) FOR DTC ENERGY ACCOUNTING AND AUDIT PURPOSE

ANNEXURE – II

COMPONENT SPECIFICATION

Sr. No.	Component function	Requirement	Makes and Origin
1	Current Transformers	The Meters shall be with the current transformers as measuring elements.	The current transformer shall withstand for the clauses under 5 & 9 of IS 14697 / 1999
2	Measurement or computing chips	The measurement or computing chips used in the Meter shall be with the Surface mount type along with the ASICs.	<p>USA: Analog Devices, Cyrus Logic, Atmel, Philips Teridian, Dallas, ST, Texas Instruments, Motorola, National Semiconductor, Maxim, Onsemiconductors, Freescale</p> <p>Germany: Siemens, Infineon, Toshiba, Renasas, Hitachi.</p> <p>Austria: AMS</p> <p>Holland: Philips (N X P)</p> <p>South Africa: SAMES</p> <p>Japan: NEC</p>
3	Memory chips	The memory chips shall not be affected by external parameters like sparking, high voltage spikes or electrostatic discharges. There shall be security isolation between metering circuit, communication circuit, and power circuit.	<p>USA: Atmel, Teridian, Philips ST, National Semiconductors, Texas Instruments, Microchip, Spansion (Fujitsu), Ramtron.</p> <p>Japan: Hitachi, Renasas.</p> <p>Germany: Siemens</p>
4	Display modules	(a) The display modules shall be well protected from the external UV	<p>Singapore: Bonafied Technologies, E-smart Displaytech,</p>

TECHNICAL SPECIFICATION OF LT AC THREE PHASE, FOUR WIRE -/5 AMPS CT OPERATED FULLY STATIC AMR COMPATIBLE TOD TRI - VECTOR ENERGY METER AS PER CATEGORY - 'C' OF IS: 15959 / 2011 (WITH LATEST AMENDMENTS UPTO DATE) FOR DTC ENERGY ACCOUNTING AND AUDIT PURPOSE

		<p>radiations.</p> <p>(b) The display visibility shall be sufficient to read the Meter mounted at height of 0.5 meter as well as at the height of 2 meters.</p> <p>(c) The construction of the modules shall be such that the displayed quantity shall not be disturbed with the life of display (PIN Type).</p> <p>(d) It shall be trans-reflective HTN (Hyper Twisted Nematic (120°)) or STN (Super Twisted Nematic (160°)) type industrial grade with extended temperature range.</p>	<p>Korea: Advantek, Jebon</p> <p>Japan: Hitachi, Sony, L & G.</p> <p>Korea: Union Display Inc.</p> <p>Malaysia: Crystal Clear Technology.</p> <p>Hongkong: Genda</p> <p>China: Success, Tinma, Haijing, Truly.</p>
5	Communication Modules	<p>Communication modules shall be compatible for the two ports (one optical port for communication with meter reading instruments & the other hardwired RS 232 port to communicate with various modems for AMR)</p>	<p>USA: HP, National Semiconductors, Optonica</p> <p>Holland/Korea: Phillips</p> <p>Japan: Hitachi</p> <p>Taiwan: Ligitek</p>
6	Optical port	<p>Optical port shall be used to transfer the meter data to meter reading instrument.</p> <p>The mechanical construction of the port shall be such to facilitate the data transfer easily.</p>	<p>USA: HP, National Semiconductors, Maxim</p> <p>Holland/Korea: Phillips</p> <p>Japan: Hitachi</p> <p>Taiwan: Ligitek</p>

TECHNICAL SPECIFICATION OF LT AC THREE PHASE, FOUR WIRE -/5 AMPS CT OPERATED FULLY STATIC AMR COMPATIBLE TOD TRI - VECTOR ENERGY METER AS PER CATEGORY - 'C' OF IS: 15959 / 2011 (WITH LATEST AMENDMENTS UPTO DATE) FOR DTC ENERGY ACCOUNTING AND AUDIT PURPOSE

7	Power supply	The power supply shall be with the Capabilities as per the relevant standards. The power supply unit of the meter shall not be affected in case the maximum voltage of the system appears to the terminals due to faults or due to wrong connections	SMPS Type
8	Electronic components	The active & passive components shall be of the surface mount type & are to be handled & soldered by the state of art assembly processes.	<p>USA: Atmel, National Semiconductors, Texas Instruments, Philips, BC Component, Analog devices, ST, Freescale, Onsemiconductors, Maxim, AVX,, Intersil, Raltron, Sipex,, Kemet, Fairchild, Fox, Muruta, Agilent, Abracon, Diode Inc, Honeywell, Power Integration, Roham.</p> <p>Japan: Hitachi, Oki, AVZ or Ricon, Toshiba, Epson, Kemet, Alps Muruta, TDK, Sanyo, Samsung.</p> <p>India: KELTRON, Incap, VEPL, PEC, RMC, Gujarat Polyavx, Prismatic, Cermet, MFR Electronic Components Pvt. Ltd,</p> <p>Korea: Samsung</p> <p>Japan: Panasonic</p> <p>Germany: Vishay, Epcos, Diotech, Kemet.</p>

TECHNICAL SPECIFICATION OF LT AC THREE PHASE, FOUR WIRE -/5 AMPS CT OPERATED FULLY STATIC AMR COMPATIBLE TOD TRI - VECTOR ENERGY METER AS PER CATEGORY - 'C' OF IS: 15959 / 2011 (WITH LATEST AMENDMENTS UPTO DATE) FOR DTC ENERGY ACCOUNTING AND AUDIT PURPOSE

9	Mechanical parts	<p>(a) The internal electrical components shall be of electrolytic copper & shall be protected from corrosion, rust etc.</p> <p>(b) The other mechanical components shall be protected from rust, corrosion etc. by suitable plating / painting methods.</p>	
10	Battery	Chargeable maintenance free guaranteed life of 10 years.	<p>USA: Maxell, Renata, Tedirun,</p> <p>Japan: Sony, National, Panasonic, Mitsubishi, Sanyo.</p> <p>Germany: Varta</p> <p>France: Saft</p> <p>Korea: Tekcell, Vitzrocell.</p>
11	RTC & Micro controller.	The accuracy of RTC shall be as per relevant IEC / IS standards.	<p>USA: Philips, Dallas Atmel, Motorola, Microchip, Epson, ST, Teridian</p> <p>Japan: NEC or Oki.</p>
12	P.C.B.	Glass Epoxy, fire resistance grade FR4, with minimum thickness 1.6 mm.	

TECHNICAL SPECIFICATION OF LT AC THREE PHASE, FOUR WIRE -/5 AMPS CT OPERATED FULLY STATIC AMR COMPATIBLE TOD TRI - VECTOR ENERGY METER AS PER CATEGORY - 'C' OF IS: 15959 / 2011 (WITH LATEST AMENDMENTS UPTO DATE) FOR DTC ENERGY ACCOUNTING AND AUDIT PURPOSE

SCHEDULE - 'A'

GUARANTEED TECHNICAL PARTICULARS (TO BE FILLED ONLINE)

ITEM NAME	LT AC 3 PHASE, 4 WIRE -/5 AMPS CT OPERATED FULLY STATIC AMR COMPATIBLE TOD TRI - VECTOR ENERGY METER AS PER CATEGORY - 'A' OF IS: 15959 / 2011 FOR USE ON LT DTC ENERGY ACCOUNTING & AUDIT PURPOSES	
SR. NO.	GTP PARAMETERS	GTP VALUES
1.	MANUFACTURER'S / SUPPLIER'S NAME AND ADDRESS WITH WORKS ADDRESS	TEXT
2.	MAKE AND TYPE OF METER	TEXT
3.	APPLICABLE STANDARDS	TEXT
4.	METER BEARS ISI MARK (YES/NO)	BOOLEAN
5.	FREQUENCY	TEXT
6.	ACCURACY CLASS OF METER	TEXT
7.	RATED VOLTAGE	TEXT
8.	VOLTAGE RANGE	TEXT
9.	CURRENT RATING	TEXT
10.	BASIC CURRENT (IB) OF METER	TEXT
11.	MAXIMUM CONTINUOUS CURRENT (IMAX)	TEXT
12.	SHORT TIME OVER CURRENT	TEXT
13.	STARTING CURRENT OF METER	TEXT
14.	POWER FACTOR	TEXT

TECHNICAL SPECIFICATION OF LT AC THREE PHASE, FOUR WIRE -/5 AMPS CT OPERATED FULLY STATIC AMR COMPATIBLE TOD TRI - VECTOR ENERGY METER AS PER CATEGORY - 'C' OF IS: 15959 / 2011 (WITH LATEST AMENDMENTS UPTO DATE) FOR DTC ENERGY ACCOUNTING AND AUDIT PURPOSE

15.	POWER CONSUMPTION IN EACH VOLTAGE CIRCUIT	TEXT
16.	POWER CONSUMPTION IN EACH CURRENT CIRCUIT	TEXT
17.	POWER SUPPLY IS SMPS & MICRO CONTROL TYPE (YES/NO)	BOOLEAN
18.	STANDARD REFERENCE TEMPERATURE OF METER	TEXT
19.	MEAN TEMPERATURE CO-EFFICIENT	TEXT
20.	KVA MD PROVIDED (YES/NO)	BOOLEAN
21.	METER BASE & COVER IS MADE OUT OF TRANSPARENT, UNBREAKABLE, TOUGH, NON-BREAKABLE, HIGH GRADE, FIRE RESISTANT POLYCARBONATE MATERIAL SO AS TO GIVE IT AND QUALITIES. (YES/NO)	BOOLEAN
22.	METER BODY IS MADE OF TRANSPARENT POLYCARBONATE (YES/NO)	BOOLEAN
23.	POLY CARBONATE BODY OF METER CONFORMS TO IS: 11731 (FV-2 CATEGORY) (YES/NO)	BOOLEAN
24.	POLY CARBONATE BODY MEETS THE TEST REQUIREMENT OF (a) HEAT DEFLECTION TEST AS PER ISO 75 > 150°C (YES/NO)	BOOLEAN
25.	(b) GLOW WIRE TEST AS PER IS: 11000 (PART 2/SEC-1) 2008 OR IEC PUB 60695-2-12 AT 900°C (YES/NO)	BOOLEAN
26.	(c) BALL PRESSURE TEST AS PER IEC-60695-10-2 (YES/NO)	BOOLEAN
27.	(d) FLAMMABILITY TEST AS PER UL 94 OR IS 11731 (PART-2) 1986 (YES/NO)	BOOLEAN
28.	TYPE TEST REPORT NOS. & DATE OF ABOVE (a) to (d)	TEXT

TECHNICAL SPECIFICATION OF LT AC THREE PHASE, FOUR WIRE -/5 AMPS CT OPERATED FULLY STATIC AMR COMPATIBLE TOD TRI - VECTOR ENERGY METER AS PER CATEGORY - 'C' OF IS: 15959 / 2011 (WITH LATEST AMENDMENTS UPTO DATE) FOR DTC ENERGY ACCOUNTING AND AUDIT PURPOSE

29.	PHYSICAL WATER ABSORPTION VALUE OF METER BODY	TEXT
30.	THERMAL HDDT VALUE OF METER BODY	TEXT
31.	TENSILE STRENGTH OF METER BODY	TEXT
32.	FLEXURE STRENGTH OF METER BODY	TEXT
33.	MODULUS OF ELASTICITY OF METER BODY	TEXT
34.	IZOD IMPACT STRENGTH OF METER BODY NOTCHED AT 23°C	TEXT
35.	POLY-CARBONATE TRANSPARENT BASE AND COVER IS ULTRA-SONICALLY WELDED (CONTINUOUS WELDING) (YES/NO)	BOOLEAN
36.	THICKNESS OF MATERIAL FOR METER COVER & BASE IS 2 MM MINIMUM (YES/NO)	BOOLEAN
37.	METER BODY TYPE TESTED FOR IP51 DEGREE OF PROTECTION AS PER IS: 12063 AGAINST INGRESS OF DUST, MOISTURE & VERMIN (YES/NO)	BOOLEAN
38.	IP51 DEGREE OF PROTECTION AS PER IS: 12063 TEST CERTIFICATE NO. & DATE	TEXT
39.	METER COVER IS SECURED TO BASE BY MEANS OF SEALABLE UNIDIRECTIONAL CAPTIVE SCREWS WITH TWO HOLES. (YES/NO)	BOOLEAN
40.	TERMINAL BLOCK IS MADE FROM HIGH QUALITY NON-HYGROSCOPIC, FIRE RETARDANT, REINFORCED POLYCARBONATE / NON-BAKELITE MATERIAL (YES/NO)	BOOLEAN
41.	MATERIAL OF WHICH THE TERMINAL BLOCK IS MADE IS CAPABLE OF PASSING THE TESTS GIVEN IN IS: 13360 (PART 6/SEC 17), ISO 75-1 (1993) & ISO 75-2 (1993) FOR A TEMPERATURE OF 135°C AND A PRESSURE OF 1.8 MPA (METHOD A) (YES/NO)	BOOLEAN

TECHNICAL SPECIFICATION OF LT AC THREE PHASE, FOUR WIRE -/5 AMPS CT OPERATED FULLY STATIC AMR COMPATIBLE TOD TRI - VECTOR ENERGY METER AS PER CATEGORY - 'C' OF IS: 15959 / 2011 (WITH LATEST AMENDMENTS UPTO DATE) FOR DTC ENERGY ACCOUNTING AND AUDIT PURPOSE

42.	TYPE TEST REPORT NOS. & DATE OF ABOVE	TEXT
43.	TWO SCREWS ARE PROVIDED IN EACH CURRENT & POTENTIAL TERMINAL FOR EFFECTIVELY CLAMPING THE EXTERNAL LEADS OR THIMBLES IN TERMINAL BLOCK (YES/NO)	BOOLEAN
44.	MINIMUM INTERNAL DIAMETER OF TERMINAL HOLE	TEXT
45.	TERMINATION ARRANGEMENT IS PROVIDED WITH AN EXTENDED TRANSPARENT TERMINAL COVER AS PER CLAUSE NUMBER 6.5.2 OF IS: 14697 / 1999 (AMENDED UPTO DATE) IRRESPECTIVE OF REAR CONNECTIONS (YES/NO)	BOOLEAN
46.	TERMINAL COVER IS UNBREAKABLE, TOUGH, NON-BREAKABLE, HIGH GRADE, FIRE RESISTANT POLYCARBONATE & IS MADE OF THE SAME MATERIAL AS THAT OF METER BODY (YES/NO)	BOOLEAN
47.	TERMINAL COVER IS TRANSPARENT (YES/NO)	BOOLEAN
48.	TERMINAL COVER ENCLOSES ACTUAL TERMINALS, CONDUCTOR FIXING SCREWS AND A SUITABLE LENGTH OF EXTERNAL CONDUCTORS AND THEIR INSULATION (YES/NO)	BOOLEAN
49.	TERMINAL COVER IS PROVIDED WITH ONE SIDE HINGE (YES/NO)	BOOLEAN
50.	INDEPENDENT SEALING PROVISION IS MADE AGAINST OPENING OF THE TERMINAL COVER AND FRONT COVER TO PREVENT UNAUTHORIZED TAMPERING (YES/NO)	BOOLEAN
51.	UNIDIRECTIONAL SCREWS WITH TWO HOLES FOR SEALING PURPOSE OF TERMINAL COVER ARE PROVIDE (YES/NO)	BOOLEAN
52.	FIXING SCREWS USED ON THE TERMINAL COVER FOR FIXING AND SEALING ARE HELD CAPTIVE IN THE TERMINAL COVER (YES/NO)	BOOLEAN

TECHNICAL SPECIFICATION OF LT AC THREE PHASE, FOUR WIRE -/5 AMPS CT OPERATED FULLY STATIC AMR COMPATIBLE TOD TRI - VECTOR ENERGY METER AS PER CATEGORY - 'C' OF IS: 15959 / 2011 (WITH LATEST AMENDMENTS UPTO DATE) FOR DTC ENERGY ACCOUNTING AND AUDIT PURPOSE

53.	PROPER SIZE OF GROOVES PROVIDED AT BOTTOM OF TERMINAL COVER FOR INCOMING SERVICE CONNECTIONS (YES/NO)	BOOLEAN
54.	PUSH BUTTONS ARE PROVIDED AS PER SPECIFICATION (YES/NO)	BOOLEAN
55.	PROVISION TO PUT AT LEAST TWO SEALS BY UTILITY (YES/NO)	BOOLEAN
56.	PROVISION OF DISPLAY OF HIGH RESOLUTION READING / ALTERNATE MODE (YES/NO)	BOOLEAN
57.	OUTPUT DEVICE FOR TESTING OF METER IS BLINKING LED / LCD WITH CONSTANT PULSE RATE IS PROVIDED (YES/NO)	BOOLEAN
58.	RESOLUTION OF THE TEST OUTPUT DEVICE IS SUFFICIENT TO ENABLE THE STARTING CURRENT TEST IN LESS THAN 10 MINUTES (YES/NO)	BOOLEAN
59.	METER CONSTANT IS INDELIBLY PRINTED ON THE NAME PLATE OF THE METER (YES/NO)	BOOLEAN
60.	METER ACCURACY NOT AFFECTED BY AC / DC / PERMANENT MAGNETIC FIELD UPTO 0.2 TESLA (YES/NO)	BOOLEAN
61.	UNDER INFLUENCE OF ANY MAGNETIC FIELD ABOVE 0.2 TESLA, IF THE ERRORS ARE BEYOND PERMISSIBLE LIMITS, METER RECORDS ENERGY CONSIDERING I _{MAX} AND REFERENCE VOLTAGE AT UNITY POWER FACTOR (YES/NO)	BOOLEAN
62.	METER IS CAPABLE TO WITHSTAND & NOT GET DAMAGED IF PHASE TO PHASE VOLTAGE IS APPLIED BETWEEN PHASES & NEUTRAL FOR FIVE MINUTES (YES/NO)	BOOLEAN
63.	POWER SUPPLY UNIT IS MICRO CONTROL TYPE (SMPS) (YES/NO)	BOOLEAN
64.	NON SPECIFIED DISPLAY PARAMETERS IN ARE BLOCKED AND NOT ACCESSIBLE FOR	BOOLEAN

TECHNICAL SPECIFICATION OF LT AC THREE PHASE, FOUR WIRE -/5 AMPS CT OPERATED FULLY STATIC AMR COMPATIBLE TOD TRI - VECTOR ENERGY METER AS PER CATEGORY - 'C' OF IS: 15959 / 2011 (WITH LATEST AMENDMENTS UPTO DATE) FOR DTC ENERGY ACCOUNTING AND AUDIT PURPOSE

	REPROGRAMMING AT SITE (YES/NO)	
65.	CTS ARE PROVIDED WITH MAGNETIC SHIELDING AND ARE TESTED SEPARATELY PRIOR TO ASSEMBLY (YES/NO)	BOOLEAN
66.	COMPLETE METERING SYSTEM DOES NOT AFFECTED BY EXTERNAL ELECTROMAFNETIC INTERFERENCE (YES/NO)	BOOLEAN
67.	REAL TIME QUARTZ CLOCK IS USED IN METER FOR MAINTAINING TIME (IST) AND CALENDAR (YES/NO)	BOOLEAN
68.	RTC BATTERY & BATTERY FOR DISPLAY ARE SEPARATE (YES/NO)	BOOLEAN
69.	RTC BATTERY IS NON - RECHARGEABLE TYPE (YES/NO)	BOOLEAN
70.	RTC PRE - PROGRAMMED FOR 30 YEARS DAY / DATE WITHOUT ANY NECESSITY FOR CORRECTION (YES/NO)	BOOLEAN
71.	MAXIMUM DRIFT TIME OF RTC PER YEAR	TEXT
72.	DAY / DATE SETTING & SYNCHRONISATION POSSIBLE THROUGH PASSWORD / KEY CODE (YES/NO)	BOOLEAN
73.	METER WITHSTANDS ANY TYPE OF HIGH VOLTAGE & HIGH FREQUENCY SURGES WHICH ARE SIMILAR TO THE SURGES PRODUCED BY INDUCTION COIL TYPE INSTRUMENTS WITHOUT AFFECTING THE ACCURACY OF THE METER (YES/NO)	BOOLEAN
74.	ACCURACY OF METER IS NOT AFFECTED WITH APPLICATION OF ABNORMAL VOLTAGE / FREQUENCY GENERATING DEVICE SUCH AS SPARK DISCHARGE OF APPROXIMATELY 35 KV (YES/NO)	BOOLEAN
75.	SPARK DISCHARGE OF APPROXIMATELY 35 KV CARRIED OUT (YES/NO)	BOOLEAN

TECHNICAL SPECIFICATION OF LT AC THREE PHASE, FOUR WIRE -/5 AMPS CT OPERATED FULLY STATIC AMR COMPATIBLE TOD TRI - VECTOR ENERGY METER AS PER CATEGORY - 'C' OF IS: 15959 / 2011 (WITH LATEST AMENDMENTS UPTO DATE) FOR DTC ENERGY ACCOUNTING AND AUDIT PURPOSE

76.	METER LOGS UNSATISFACTORY OR NON FUNCTIONING OF RTC BATTERY (YES/NO)	BOOLEAN
77.	METERING PROTOCOL AS PER TECHNICAL SPECIFICATION (YES/NO)	BOOLEAN
78.	RS 232 & OPTICAL PORTS FOR COMMUNICATION AND WITH SEALING ARRANGEMENT ARE PROVIDED (YES/NO)	BOOLEAN
79.	DEFAULT & MINIMUM BAUD RATE OF RS 232 & OPTICAL PORTS IS 9600 BPS (YES/NO)	BOOLEAN
80.	INTERNAL NI-MH OR LI-ION OR NI CD MAINTENANCE FREE BATTERY OF LONG LIFE OF 10 YEARS WITH PUSH BUTTON ARRANGEMENT FOR ACTIVATION OF BATTERY OR EXTERNAL BATTERY WITH INDUCTIVE COUPLING ARRANGEMENT WITH INBUILT CHARGER IN THE RATIO OF 1 BATTERY PACK PER 50 NOS. OF METERS PROVIDED	TEXT
81.	METER PCB IS WIRE LESS & IS MADE BY SURFACE MOUNTING TECHNOLOGY (YES/NO)	BOOLEAN
82.	METER RECORDS & DISPLAYS TOTAL ENERGY INCLUDING HARMONIC ENERGY (YES/NO)	BOOLEAN
83.	NON VOLATILE MEMORY (NVM) WITH MINIMUM RETENTION PERIOD OF 10 YEARS IS PROVIDED (YES/NO)	BOOLEAN
84.	6 (SIX) TOD TIME ZONES FOR ENERGY AND DEMAND ARE PROVIDED (YES/NO)	BOOLEAN
85.	PROVISION FOR MD INTEGRATION PERIOD OF 15 MINUTE OR 30 MINUTE IS MADE (YES/NO)	BOOLEAN
86.	PROVISION THROUGH COMMUNICATION DRIVEN RESET OF MD IS PROVIDED (YES/NO)	BOOLEAN
87.	PROVISION TO RESET MD THROUGH LOCAL PUSH BUTTON IS PROVIDED (YES/NO)	BOOLEAN
88.	PROVISION FOR AUTO RESET OF MD AT CERTAIN PREDEFINED PERIOD IS PROVIDED (YES/NO)	BOOLEAN

TECHNICAL SPECIFICATION OF LT AC THREE PHASE, FOUR WIRE -/5 AMPS CT OPERATED FULLY STATIC AMR COMPATIBLE TOD TRI - VECTOR ENERGY METER AS PER CATEGORY - 'C' OF IS: 15959 / 2011 (WITH LATEST AMENDMENTS UPTO DATE) FOR DTC ENERGY ACCOUNTING AND AUDIT PURPOSE

89.	ALL ANTI TAMPER FEATURES ARE PROVIDED AS PER SPECIFICATION (YES/NO)	BOOLEAN
90.	METER LOGS TAMPER EVENTS AS PER SPECIFICATION (YES/NO)	BOOLEAN
91.	DETECTION OF TAMPER NO. & TAMPER EVENT IS REGISTERED IN TAMPER EVENT REGISTER (YES/NO)	BOOLEAN
92.	METER KEEPS RECORD OF TAMPER EVENTS FOR MINIMUM 200 EVENTS ON FIFO BASIS (YES/NO)	BOOLEAN
93.	SUPPLY INDICATION IN THE FORM OF LED / LCD DISPLAY IS PROVIDED (YES/NO)	BOOLEAN
94.	SUPPLY INDICATION IS VISIBLE FROM THE FRONT OF THE METER (YES/NO)	BOOLEAN
95.	BACKLIT LIQUID CRYSTAL DISPLAY (LCD) OF MINIMUM 6 DIGITS AND MINIMUM 10 MM HEIGHT AND WIDE VIEWING ANGLE IS PROVIDED (YES/NO)	BOOLEAN
96.	SIZE OF DIGITS	BOOLEAN
97.	AUTO DISPLAY CYCLING PUSH BUTTON WITH PERSISTENCE TIME OF 9 SECONDS IS PROVIDED (YES/NO)	TEXT
98.	BACKLIT LIQUID CRYSTAL DISPLAY (LCD) IS SUITABLE FOR TEMPERATURE WITHSTAND OF 70°C (YES/NO)	BOOLEAN
99.	PUSH BUTTON FOR HIGH RESOLUTION DISPLAY / ALTERNATE MODE OF DISPLAY IS PROVIDED (YES/NO)	BOOLEAN
100.	METER IS PROGRAMMED FOR (A) MD INTEGRATION PERIOD OF 30 MINUTES (YES/NO)	BOOLEAN
101.	(B) AVERAGE POWER FACTOR WITH 2 DECIMAL DIGITS (YES/NO)	BOOLEAN

TECHNICAL SPECIFICATION OF LT AC THREE PHASE, FOUR WIRE -/5 AMPS CT OPERATED FULLY STATIC AMR COMPATIBLE TOD TRI - VECTOR ENERGY METER AS PER CATEGORY - 'C' OF IS: 15959 / 2011 (WITH LATEST AMENDMENTS UPTO DATE) FOR DTC ENERGY ACCOUNTING AND AUDIT PURPOSE

102.	(C) AUTO RESET KVAMD AT 24.00 HRS. OF LAST DAY OF THE MONTH AS PER CLAUSE 10.00 (III) OF SPECIFICATION (YES/NO)	BOOLEAN
103.	(D) ARRAY OF DATA TO BE RETAINED INSIDE THE METER MEMORY FOR THE LAST 45 DAYS FOR A CAPTURE PERIOD OF 30 MINUTES ON FIRST IN FIRST OUT BASIS (FIFO) (YES/NO)	BOOLEAN
104.	SEQUENCE OF DISPLAY PARAMETERS IS AS PER SPECIFICATIONS (YES/NO)	BOOLEAN
105.	METER RECORDS & DISPLAYS THE QUANTITIES AS PER SPECIFICATION (YES/NO)	BOOLEAN
106.	DISPLAY OTHER THAN SPECIFIED IS BLOCKED (YES/NO)	BOOLEAN
107.	OTHER KVA MD VALUES ARE AVAILABLE IN RESET BACKUP DATA FOR 6 MONTHS.	BOOLEAN
108.	METER DISPLAY RETURNS TO DEFAULT DISPLAY MODE IF 'PUSH BUTTON' IS NOT OPERATED FOR 15 SECONDS (YES/NO)	BOOLEAN
109.	BILLING DATA IS AS PER SPECIFICATION	BOOLEAN
110.	PROVISION FOR RECORDING HISTORY OF BILLING PARAMETERS FOR LAST 6 MONTHS (YES/NO)	BOOLEAN
111.	PROVISION FOR LOAD SURVEY DATA FOR EVERY 30 MINUTES AND FOR PREVIOUS 45 DAYS FOR SPECIFIED PARAMETERS ON FIFO BASIS (YES/NO)	BOOLEAN
112.	METER STORES NAME PLATE DETAILS AS GIVEN IN THE TABLE 30 OF ANNEX F OF IS: 15959 / 2011 & ARE READABLE AS A PROFILE AS AND WHEN REQUIRED (YES/NO)	BOOLEAN
113.	A DLMS COMPLIANT HHU AS PER ANNEX J OF IS: 15959 / 2011 IS PROVIDED (YES/NO)	BOOLEAN
114.	A PROVISION FOR AUTO POWER SAVE IS MADE ON HHU (YES/NO)	BOOLEAN

TECHNICAL SPECIFICATION OF LT AC THREE PHASE, FOUR WIRE -/5 AMPS CT OPERATED FULLY STATIC AMR COMPATIBLE TOD TRI - VECTOR ENERGY METER AS PER CATEGORY - 'C' OF IS: 15959 / 2011 (WITH LATEST AMENDMENTS UPTO DATE) FOR DTC ENERGY ACCOUNTING AND AUDIT PURPOSE

115.	HHU HAS A MEMORY CAPACITY OF 8 MB SRAM (STATIC RAM) WITH BATTERY BACKUP & UPGRADEABLE AND BIOS / OS ON FLASH / EEPROM MEMORY OF 256 KB (YES/NO)	BOOLEAN
116.	HHU OFFERED IS FULLY TYPE TESTED AT APPROVED NABL LABORATORY FOR (a) TESTS OF MECHANICAL REQUIREMENT SUCH AS FREE FALL TEST, SHOCK TEST, VIBRATION TEST (YES/NO)	BOOLEAN
117.	(b) TESTS OF CLIMATIC INFLUENCES SUCH AS TESTS OF PROTECTION AGAINST PENETRATION OF DUST AND WATER (IP 6X), DRY HEAT TEST, COLD TEST, DAMP HEAT CYCLIC TEST (YES/NO)	BOOLEAN
118.	(c) TESTS FOR ELECTROMAGNETIC COMPATIBILITY (EMC) (YES/NO)	BOOLEAN
119.	(d) TEST OF IMMUNITY TO ELECTROMAGNETIC HF FIELDS (YES/NO)	BOOLEAN
120.	(e) RADIO INTERFERENCE MEASUREMENT (YES/NO)	BOOLEAN
121.	TYPE TEST REPORT NOS. & DATE OF HHU (YES/NO)	BOOLEAN
122.	BASE COMPUTER SOFTWARE IS "WINDOWS" BASED & USER FRIENDLY (YES/NO)	TEXT
123.	NO EDITING IN TRANSFERRED DATA IS POSSIBLE ON BASE COMPUTER AS WELL AS HHU BY ANY MEANS (YES/NO)	BOOLEAN
124.	DOWNLOADING SOFTWARE IS PROVIDED TO INSTALL ON OUR LAPTOP FOR DOWNLOADING DATA DIRECTLY ON LAPTOP FROM METER WITHOUT THE USE OF HHU (YES/NO)	BOOLEAN
125.	SOFTWARE PROVIDED ON LAPTOP OR PC IS COMPATIBLE TO READ THE DATA FROM USB DRIVE (YES/NO)	BOOLEAN
126.	CABLE WITH USB TERMINATION PROVIDED	BOOLEAN

TECHNICAL SPECIFICATION OF LT AC THREE PHASE, FOUR WIRE -/5 AMPS CT OPERATED FULLY STATIC AMR COMPATIBLE TOD TRI - VECTOR ENERGY METER AS PER CATEGORY - 'C' OF IS: 15959 / 2011 (WITH LATEST AMENDMENTS UPTO DATE) FOR DTC ENERGY ACCOUNTING AND AUDIT PURPOSE

	(YES/NO)	
127.	TOTAL TIME TAKEN FOR DOWNLOADING BILLING, TAMPER AND LOAD SURVEY DATA FOR 45 DAYS	TEXT
128.	DOWNLOADING TIME OF ONLY BILLING DATA	TEXT
129.	PERMANENT NATURE CONNECTION DIAGRAM OF THE METER IS CLEARLY SHOWN ON INSIDE PORTION OF THE TERMINAL COVER (YES/NO)	BOOLEAN
130.	DISTINCTLY MARKED NAME PLATE WITH ALL ESSENTIAL PARTICULARS AS PER RELEVANT STANDARDS, CLEARLY VISIBLE, EFFECTIVELY SECURED AGAINST REMOVAL IS PROVIDED ON METER (YES/NO)	BOOLEAN
131.	METER SERIAL NUMBER IS BAR CODED WITH SIZE OF NOT BE LESS THAN 35X5 MM ALONG WITH NUMERIC NUMBER (YES/NO)	BOOLEAN
132.	CLEARLY VISIBLE, EFFECTIVELY SECURED AGAINST REMOVAL AND INDELIBLY AND DISTINCTLY MARKED WITH ALL ESSENTIAL PARTICULARS AS PER RELEVANT STANDARDS NAME PLATE IS PROVIDED ON METER (YES/NO)	BOOLEAN
133.	METER STORES NAME PLATE DETAILS AS GIVEN IN THE TABLE 30 OF ANNEX F OF IS: 15959 / 2011 & ARE READABLE AS A PROFILE AS AND WHEN REQUIRED (YES/NO)	BOOLEAN
134.	CATEGORY OF METER AS "CATEGORY A – LT CT DTC METER" IN 3 MM BOLD FONT IS MARKED ON NAME PLATE (YES/NO)	BOOLEAN
135.	WHETHER METER IS TYPE TESTED (YES/NO)	BOOLEAN
136.	TYPE TEST REPORT NOS. & DATE OF METER	BOOLEAN
137.	METER PROTOCOL REPORT NOS. & DATES	TEXT
138.	ALL ACCEPTANCE & ROUTINE TESTS, AS PER IS: 14697 / 1999 AMENDED UPTO DATE & THIS	TEXT

TECHNICAL SPECIFICATION OF LT AC THREE PHASE, FOUR WIRE -/5 AMPS CT OPERATED FULLY STATIC AMR COMPATIBLE TOD TRI - VECTOR ENERGY METER AS PER CATEGORY - 'C' OF IS: 15959 / 2011 (WITH LATEST AMENDMENTS UPTO DATE) FOR DTC ENERGY ACCOUNTING AND AUDIT PURPOSE

	SPECIFICATION ARE CARRIED OUT ON METER & METER BODY (YES/NO)	
139.	TRANSPORTATION TEST IS CARRIED OUT (YES/NO)	BOOLEAN
140.	METER & HHU ARE GUARANTEED FOR A PERIOD OF 66 MONTHS FROM THE DATE OF SUPPLY OR 60 MONTHS FROM THE DATE OF COMMISSIONING, WHICHEVER IS EARLIER (YES/NO)	BOOLEAN
141.	GUARANTEE TO REPLACE METERS / HHU FREE OF COST WHICH ARE FOUND DEFECTIVE / INOPERATIVE AT THE TIME OF INSTALLATION OR BECOME INOPERATIVE / DEFECTIVE DURING GUARANTEE PERIOD (YES/NO)	BOOLEAN
142.	FURNISH PRINCIPLE OF OPERATION OF METER OUTLINING THE METHODS AND STAGES OF COMPUTATIONS OF VARIOUS PARAMETERS STARTING FROM INPUT VOLTAGE AND CURRENT SIGNALS INCLUDING SAMPLING RATE IF APPLICABLE	BOOLEAN
143.	IN HOUSE TESTING FACILITY IS AVAILABLE FOR (A) AC VOLTAGE TEST (YES/NO)	BOOLEAN
144.	(b) INSULATION RESISTANCE TEST (YES/NO)	BOOLEAN
145.	(c) ACCURACY REQUIREMENT (YES/NO)	BOOLEAN
146.	(d) TEST ON LIMITS OF ERRORS (YES/NO)	BOOLEAN
147.	(e) TEST ON METER CONSTANT (YES/NO)	BOOLEAN
148.	(f) TEST OF STARTING CONDITION (YES/NO)	BOOLEAN
149.	(g) TEST OF NO-LOAD CONDITION (YES/NO)	BOOLEAN
150.	(h) REPEATABILITY OF ERROR TEST (YES/NO)	BOOLEAN
151.	(i) TEST OF POWER CONSUMPTION (YES/NO)	BOOLEAN

TECHNICAL SPECIFICATION OF LT AC THREE PHASE, FOUR WIRE -/5 AMPS CT OPERATED FULLY STATIC AMR COMPATIBLE TOD TRI - VECTOR ENERGY METER AS PER CATEGORY - 'C' OF IS: 15959 / 2011 (WITH LATEST AMENDMENTS UPTO DATE) FOR DTC ENERGY ACCOUNTING AND AUDIT PURPOSE

152.	(j) TRANSPORTATION TEST (YES/NO)	BOOLEAN
153.	(k) TAMPER CONDITIONS AS PER MSEDCL SPECIFICATION (YES/NO)	BOOLEAN
154.	(l) GLOW WIRE TEST (YES/NO)	BOOLEAN
155.	(m) LONG DURATION TEST (YES/NO)	BOOLEAN
156.	(n) FLAMABILITY TEST (YES/NO)	BOOLEAN
157.	(o) MANUFACTURER HAVE DULY CALIBRATED RSS METER OF CLASS 0.1 ACCURACY (YES/NO)	BOOLEAN
158.	15 (FIFTEEN NOS. OF SAMPLE METERS & 1 (ONE) HHU AS PER TECHNICAL SPECIFICATIONS ARE SUBMITTED ALONGWYH OFFER (YES/NO)	BOOLEAN
159.	MANUFACTURING PROCESS, ASSEMBLY, TESTING & MANUFACTURING ACTIVITIES AS PER TECHNICAL SPECIFICATION (YES/NO)	BOOLEAN
160.	AGEING TEST FOR 72 HOURS AT 55°C TEMPERATURE AND ATMOSPHERIC HUMIDITY UNDER REAL LIFE CONDITION AT FULL LOAD CURRENT TO ELIMINATE INFANT MORTALITY IS CARRIED OUT (YES/NO)	BOOLEAN
161.	QUALITY ASSURANCE PLAN AS PER SPECIFICATIONS IS ENCLOSED (YES/NO)	TEXT
162.	COMPONENT SPECIFICATION AS PER SPECIFICATION (YES/NO)	BOOLEAN

1.00 SCOPE:

This specification covers design, manufacturing, testing at works and supply of Meter Box along with single phase resin cast ring type 03 nos. LT CTs. The Meter Box shall be made out of CRCA M.S. Sheet confirming to IS: 13947 or Sheet Moulding Compound (SMC) confirming to IS: 13410 / 1992 amended upto date & IS: 14772 / 2000 (amended upto date) for use in electrical distribution system in Maharashtra. The system shall be AC three phase, four wires, 415 V, 50 Hz with effectively grounded neutral. The Meter Box shall be suitable for housing LT AC Three Phase Four Wire CT operated Static TOD Tri - Vector Energy Meters with single phase resin cast ring type CTs and modem & antenna in indoor as well as outdoor applications.

2.00 QUALIFYING REQUIREMENTS:

- 2.01 Offers of manufacturers / suppliers of Energy Meters Boxes shall be accepted against the Tender.
- 2.02 The following qualifying requirement shall be fulfilled by the bidders.
- (a) The bidder shall have turnover of 60 % of the estimated cost of the tender during any one of the last three financial years.
 - (b) The bidder shall have supplied one lakhs energy meter boxes during the last three financial years.
 - (c) The bidder shall have minimum experience of three years of supply or manufacturing for meter boxes upto the end of the last financial year.
- 2.3 The offers of Indian subsidiary company, whose parent company is located abroad fulfilling the qualifying requirements, shall be considered provided the Indian participant subsidiary company fulfils the minimum experience of three years of supply or manufacturing of meters boxes upto the end of the last financial year. However, the conditions of turnover of 60% of the estimated cost of the tender during any one of the last three financial years and supply of minimum quantity of one lakh meter boxes during last three financial years can be fulfilled by the parent company located in abroad on behalf of their Indian subsidiary company. The parent company shall furnish undertaking for accepting responsibility for supplying quality meter boxes as per specifications and execution of the contract on behalf of its India based subsidiary unit who has participated in the tender in AnnexureU-I.

- 2.4 In case of offers of foreign bidders/manufacturers, they shall fulfil Qualifying Requirement as per Sr. No.2.1 and 2.2 above.

3 SERVICE CONDITIONS:

Equipment to be supplied against this specification shall be suitable for satisfactory continuous operation under the following tropical conditions.

Maximum ambient temperature	50 ⁰ C
Maximum temperature in shade	45 ⁰ C
Minimum temperature of Air in Shade	3.5 ⁰ C
Relative Humidity	10 to 100 %
Maximum annual rain fall	1450 mm
Maximum wind pressure	150 Kg / m ²
Maximum altitude above mean sea level	1000 meter
Isoceraunic level	50 days per year
Seismic level (Horizontal Acceleration)	0.3 g
Climate	Moderately hot and humid tropical climate conducive to rust and fungus growth.

4 APPLICABLE STANDARDS:

Unless otherwise modified in this specification, the meter box shall generally conform with the provisions of IS: 14772 / 2000 (Amended upto date) and material of construction i.e. for SMC to IS: 13410 / 1992 & for M.S Sheet to IS: 13947 & requirement of this specification.

5 DESIGN & CONSTRUCTION:

- 5.01 The meter box shall be made by DEEP drawn process conforming to the requirements of IS: 13947 or from thermosetting plastic i.e. glass reinforced polyester sheet moulding compound Grade S-3 conforming to IS: 13410 / 1992, & requirement of this specification.
- 5.02 The boxes shall be made by Hot Press compression moulding Process.
- 5.03 The base and cover of meter box shall be individually in one piece except for fixing of accessories like hinges, clamp, handles etc.
- 5.04 The meter box shall be so constructed as to have roof tapering down for easy flow of rainwater.

TECHNICAL SPECIFICATIONS OF THREE PHASE ENERGY METER BOX SUITABLE FOR AUTOMATIC METER READING (AMR) OF DISTRIBUTION TRANSFORMER CENTRE (DTC)

- 5.05 The box / cover shall be drawn from CRCA M.S. Sheet metal thickness not less than 2 mm. Alternatively, if SMC is used then the Meter Box shall be moulded using 100% virgin SMC, grade S-3 material. The box shall be weather proof, unbreakable and scratch resistant & shall have good workmanship. For SMC, the wall thickness of the meter box base shall be minimum 3.0 mm on load bearing side and 2.00 mm on all other sides, thickness of cover shall be minimum 2 mm.
- 5.06 The surface of the Meter Box made from CRCA M.S. Sheet shall be properly pre-treated / phosphated in 7-tank process and shall be applied with a powder coating of 40 micron thickness on outer side and inside, Powder coating shall be of smoke grey colour. Powder coating shall be weather proof & corrosion resistant and suitable for outdoor usage.
- 5.07 The SMC meter box shall be made of anti corrosive, dust proof, rust proof, vermin and water proof, ultra violet stabilized and flame retardant high grade SMC material having good dielectric and mechanical strength property.
- 5.08 The surface appearance or part of meter box must be smooth, non porous and homogeneous, free from ripples, defects and marks. No fillers or fibres shall be visible at any place.
- 5.09 The meter box shall have base raised by about 20 mm in the box for easy wiring for fixing the meter, modem and antenna. The meter screws shall not protrude outside.
- 5.10 The Meter Box shall facilitate wireless data communication with minimal disruption for AMR purpose.
- 5.11 A partition shall be provided inside the base such that box is divided in two parts. The lower partition shall house the single phase resin cast ring type CTs and the upper partition shall house the LT CT operated Static TOD Tri-Vector Energy Meter, modem & the antenna.
- 5.12 The box shall be provided with two separate doors.
- 5.13 Three holes with rubber glands of I.D. 15 mm. shall be provided in the partition sheet for Secondary CT wires and potential terminal wires along with neutral.
- 5.14 The boxes shall be suitable for outdoor application.
- 5.15 Corners of the Meter Box shall be round and not pointed ones.
- 5.16 Doors with locking arrangement shall be provided.

TECHNICAL SPECIFICATIONS OF THREE PHASE ENERGY METER BOX SUITABLE FOR AUTOMATIC METER READING (AMR) OF DISTRIBUTION TRANSFORMER CENTRE (DTC)

- 5.17 The minimum inside dimensions of the meter box shall be suitable for installation of all types of meters purchased from various meter manufacturers.
- 5.18 The meter box shall be such that there shall be minimum 100 mm clearance at the bottom, 75 mm clearance on all three sides, 25 mm clearance at the front and 20 mm clearance at the back between the meter and meter box inner wall.
- 5.19 The provision of installation of modem shall be above 75 mm from the meter top side.
- 5.20 Hinges, locking arrangement shall be of stainless steel only.
- 5.21 For SMC, the base and cover must be UV stabilized to ensure that it does not get 'Yellow' over a period of time. It shall not change in colour, shape, size, dimensions when subjected to 200 hrs on UV ageing test as per ASTM: G53 (Cl. No. 9.3), 4 Hours UV at 60⁰ C and 4 Hours Condensation at 50⁰ C. The base and cover shall be capable of withstanding temperature of boiling water for five minutes continuously without distortion or softening.
- 5.22 Each cover of Box shall be fixed on two-tamper proof inside hinges not visible from outside. Hinges shall be made of 2.5 mm M.S. sheet and shall be 40 mm in length for lower partition and 60 mm in length for upper partition. The hinges / strip hinges for compartment cover shall be so designed that the door cannot be opened without breaking the seals, i.e. the hinges / strip hinges shall be provided from inside.
- 5.23 The door of Box shall open from right to left by 90⁰. Collar of each door (cover) in closed position shall rest on the collar of the body (base) of Box. The collar of the door shall overlap the collar of the body of Box by 8 mm such that direct entry of screwdriver, tool or film is not possible. The cover shall be provided with semi circular / circular gasket of 4 mm thickness to completely fit to the base. The gasket shall be made out of good quality neoprene rubber. Thickness of rubber lining shall be such that it provides proper sealing between the cover & base of Box to avoid penetration of dust & ingress of water.
- 5.24 The enclosure shall comply with the requirements of IP – 55 for SMC & IP – 55 for CRCA M.S. Sheet as per IS: 12063 or the latest version thereof.
- 5.25 Rubber lining should be fixed with suitable adhesive so that the same does not get removed by itself on opening of the door.

TECHNICAL SPECIFICATIONS OF THREE PHASE ENERGY METER BOX SUITABLE FOR AUTOMATIC METER READING (AMR) OF DISTRIBUTION TRANSFORMER CENTRE (DTC)

- 5.26 Two numbers U-shaped latch arrangement shall be provided to each compartment to lock /seal the cover with base. A hole of 2 mm diameter shall be provided on U-shaped latch for sealing wires and additional hole of 8 mm shall be provided in the latch for locks. All holes should be aligned when latch is in closed position.
- 5.27 For meter reading and modem viewing, the box shall have two windows with Toughened / Triplex Glass Fixed with stainless steel frame from inside about 70 mm below top edge of cover for modem. The second window shall be 75 mm below the lowest edge of modem window. Glass shall have scratch proof “MSEDCL” logo on the right side top corner of the glass. This glass shall be fixed from inside of the cover of Meter Box, with single piece metal frame (Glass Holder) fixed with minimum four screws. The glass has to be fitted with a wrap around single piece rubber ring without joint made from good quality neoprene rubber so that it can withstand weather effect. The box shall have windows of size as per the table given below provided with Glass.

Particulars	Window for Meter (mm)	Window for Modem (mm)
Height (H)	160	120
Width (W)	140	140
Thickness (T)	5	5

- 5.28 The mounting arrangement of the meter and modem and antenna in the meter box shall be by way of adjustable slotted polymeric brackets / strips which shall be fixed on the base or moving slotted flat. The mounting arrangement shall be raised from the base of Box body by 20 mm. CT mounting plates shall be fixed with 2 screws & shall be provided as per the Drawings. For mounting of various makes of meter and modem & antenna, the supplier shall supply seven mounting MS screws, one for upper (M4 threads x length 12 mm) and six screws (M4 threads x 35 mm length with nut) in moving slotted flat. The mounting arrangement of the meter, modem, antenna & CTs shall be indicated by the Bidder through Drawings.
- 5.29 For mounting the box on pole, four strips of L-shape shall be welded / fixed on the box. Strips shall be 40 mm wide & 3 mm thick of M.S. sheet.

TECHNICAL SPECIFICATIONS OF THREE PHASE ENERGY METER BOX SUITABLE FOR AUTOMATIC METER READING (AMR) OF DISTRIBUTION TRANSFORMER CENTRE (DTC)

- 5.30 4 Nos. holes with superior quality rubber cable glands of internal diameters 30 mm each for incoming and outgoing cables shall be provided at both the side walls of the box for passing of cable through CTs. Rubber glands shall be fixed with suitable adhesive so that the same do not get removed. Rubber glands shall be made such that internal diameter of glands should be closed with the rubber film of approximately 3 mm thickness. Cable will go through the cable glands by cutting the rubber film of the glands.
- 5.31 Four primary cable, connectors of Aluminium shall be provided with the box. Primary cable connectors shall be used for tapping main cable and providing primary wires for voltage supply to the meter. Each cable connector shall consist of two aluminium strips of size 10 mm x 55 mm. Both strips will have holes at the ends to clamp with cable by screws and nuts. The supplier shall supply four sets of cable connectors with 4 mm² cables crimped with suitable lugs at both ends complete with screws and nuts. The cable connectors shall be insulated from outer sides with epoxy insulation of 2 mm thickness.
- 5.32 Handles shall be provided to the doors to open and close the doors.
- 5.33 Two Earthing Bolts of size 25 x 8 mm fitted with the box from inside, shall be provided for external earthing with 2 plain washers, one spring washer & two nuts. Earthing bolt shall have no layer of powder coating and shall be property zinc plated.
- 5.34 All the screws and washers shall be properly zinc plated.
- 5.35 The tolerance permissible on the overall dimensions of the Box shall be (+/-) 2%. However, the tolerance for the fittings shall be (+/-) 3%
- 5.36 For SMC, the Meter Box shall comply with magnetic influence of AC / DC / 0.5 Tesla Permanent Magnet when tested as per Meter Testing Method of CBIP Report No. 88 with meter having 0.5 Tesla Magnetic Immunity mounted in it.
- 5.37 The minimum internal dimensions of the meter box shall be 1000 mm height (H) x 350 mm width (W) x 230 mm depth (D).

6 TESTS:

The meter box shall be fully type tested in accordance with the relevant standards and as per MSEDCL requirement. All the Type Tests specified in the technical specifications shall be carried out from laboratories which are accredited by the National Board of Testing and Calibration

TECHNICAL SPECIFICATIONS OF THREE PHASE ENERGY METER BOX SUITABLE FOR AUTOMATIC METER READING (AMR) OF DISTRIBUTION TRANSFORMER CENTRE (DTC)

Laboratories (NABL) of Government of India such as ERDA, ERTL, CPRI, etc. to prove that equipments meet the requirement of the specification.

The type test report shall clearly indicate the constructional features identifying material of construction and its grade / composition as per respective IS.

The tenderer shall also furnish certificate from laboratories where type tested that required test facility available in-house for that particular test. Type Test Reports conducted in manufacturers own laboratory and certified by testing institute shall not be acceptable.

The type test report of meter box having identical constructional and other features carried out during last three years prior to due date of opening of offer shall be valid.

The detailed type test reports shall be furnished with relevant oscillogram and certified drawings of the equipment tests. The offers without type test reports shall be rejected.

The purchaser reserves the right to demand repetition of some or all the type tests in presence of purchaser's representative at purchaser's cost.

All the type test reports shall be got approved from the Chief Engineer (Distribution), MSEDCL, 5th Floor, Prakashgad, Bandra (E), Mumbai – 400 051 before commencement of supply.

The type test reports of M S Sheet Meter Box as given below shall be furnished with certified drawings to prove that equipment offered meets the requirement of the specification.

- (a) Temperature rise test as per IS: 8623 / 1993 amended upto date.
- (b) IP – 55 Test
- (c) Overall Dimension Test,
- (d) Powder Coating thickness,

The Type Test reports of SMC Meter Box as per table below shall be furnished with certified drawings to prove that the equipment offered meets the requirement of the specification and shall be get approved from the Chief Engineer (Distribution) before commencement of supply.

Sr. No.	Test	Reference Standard	Required Value
(1)	Flammability	UL-94 / IS: 1173	V2

TECHNICAL SPECIFICATIONS OF THREE PHASE ENERGY METER BOX SUITABLE FOR AUTOMATIC METER READING (AMR) OF DISTRIBUTION TRANSFORMER CENTRE (DTC)

(2)	Heat Deflection Temperature @ 1.8 MPA	IS: 13411 Annex. H / ISO 75	$\geq 150^{\circ} \text{C}$
(3)	Glow Wire Test	IS: 11000 (P2 / S1) or IEC - 695-2-1	$= 850^{\circ}\text{C}$
(4)	Ball Pressure Test	IS: 14772 / 2000 or IEC 335	Confirms
(5)	Water Absorption	IS:14772 / 2000	$= \leq 0.25\%$.
(6)	Mechanical strength	IS:14772 / 2000	$\geq 50 \text{ MPA}$
(7)	Marking, Dimension & Construction	IS:14772 / 2000	As per IS
(8)	Material Identification	IS 13410 / 1992	Sheet Moulding Compound
(9)	Resistance to ageing to humid conditions, ingress of solid objects & to harmful ingress of water	IS:14772 / 2000	Confirms
(10)	UV Ageing Test for 200 Hours	ASTM G53 (9.3)	Confirms
(11)	IP-55	IS:12063 / 1987	Confirms

In addition to above, all other tests according to IS: 14772 / 2000 (amended upto date).

For Acceptance Test, 10 Samples for each lot offered for inspection shall be selected randomly.

7 GUARANTEED TECHNICAL PARTICULARS:

The tenderer shall furnish the particulars giving specific required details of Meter box in schedule 'A' attached (As per Guaranteed Technical Particulars uploaded on e - Tendering site). The offers without the details in Schedule 'A' stand rejected.

8 TESTING AND MANUFACTURING FACILITIES:

8.01 TESTING FACILITIES:

The Tenderer must clearly indicate the details of testing facilities available in the works of manufacturer and whether the facilities are adequate to carry out all the Routine and Acceptance tests. These facilities shall be available to MSEDCL Engineers, if deputed to carry out or witness the tests in the manufacturer's works. The tenderer must have all in-house testing facility to carry out acceptance & routine tests on the meter box as per relevant IS. If any test cannot be carried out in the manufacturer works, the same shall be clearly stated. All testing equipments shall be duly calibrated in the NABL approved laboratories.

The Bidder shall have the testing facility of flammability test of V2 for SMC Meter Box.

8.02 MANUFACTURING FACILITIES:

The CRCA M.S. Sheet Meter Box manufacturer shall have following minimum manufacturing facilities in-house to prove his reliability as a manufacturer of Energy Metering Box.

- (a) Power operating shearing machine.
- (b) Power operated press break.
- (c) Power operated power presses.
- (d) Welding machines.
- (e) Assembling tools.
- (f) Assembly lines for fabrication and fitting.

The tenderer shall furnish detailed process of painting. In case the painting is to be carried out from outside agency, the tenderer shall furnish the facilities available with sub-contractor.

If SMC Meter Box is offered, the tenderer shall have the following minimum manufacturing facilities in house to prove his reliability as a manufacturer of Energy Metering Box.

- (a) SMC material manufacturing machine
- (b) Hydraulic press for hot press compression moulding
- (c) Assembly lines for fabrication and fitting

9 GUARANTEE:

The meter box shall be guaranteed for a period of five years from the date of commissioning or five and half years from the date of dispatch whichever is earlier.

The meter boxes found defective within above guarantee period shall be replaced by the supplier free of cost within one month of receipt of intimation. If the defective material is not replaced within specified period as above, the Company shall recover an equivalent amount plus 15% supervision charges from any of the bills of the supplier.

10 NAME PLATE AND MARKINGS:

The meter box shall have an anodized aluminium name plate clearly visible, effectively secured against removal and indelibly and distinctly marked with all essential particulars as per relevant standards. In addition to the requirement as per relevant standard, following information shall clearly & indelibly be embossed on the cover of the meter box.

- a) Name of Purchaser: MSEDCL
- b) Code name of manufacturer:
- c) Purchase order number & date:
- d) Year and month of manufacture:
- e) Guarantee: ... Years
- f) Sign of Danger

11 INSPECTION:

All Acceptance tests and inspection shall be carried out at the place of manufacturer unless otherwise specially agreed upon by the manufacturer and purchaser at the time of purchases. The manufacturer shall offer to the inspector representing the purchaser all the reasonable facilities, free of charge, for inspection and testing, to satisfy him that the material is being supplied in accordance with this specification. Inspection of the first lot shall be carried out jointly by representative of the Chief Engineer (Distribution) and Executive Engineer of Inspection wing.

The MSEDCL representative / Engineer attending the above testing shall carry out testing as per IS: 13947, IS: 13410 / 1992 (amended upto date) & IS: 14772 / 2000 (amended upto date) & this specification and issue a test certificate approval to the manufacturer and give clearance for dispatch.

TECHNICAL SPECIFICATIONS OF THREE PHASE ENERGY METER BOX SUITABLE FOR AUTOMATIC METER READING (AMR) OF DISTRIBUTION TRANSFORMER CENTRE (DTC)

The manufacturer shall give minimum 14 days notice for inspection of material.

12 PACKING:

The meter box shall be suitably packed in corrugated boxes in order to avoid damage during transit or handling.

13 REJECTION:

After dispatch of material against inspected lot to various store centers, the Chief Engineer, Distribution may select one complete meter box at random from the lot of each type that may be supplied to various store centers and shall test the same for all the acceptance and routine tests at any third party NABL Lab.

The 5 days advance intimation shall be given to the supplier and if the supplier fails to attend the same on the date informed, the testing will be carried out in absence of supplier's representative. The results of the testing lab shall not be disputed by the supplier. If the meter box fails in above random sample testing, the lot will be rejected.

14 SCHEDULES:

The tenderer shall fill in the following schedules which are part and parcel of the tender specification and offer and submit along with the offer. If the schedules are not submitted duly filled in with the offer, the offer shall be rejected.

Schedule 'A' ... Guaranteed Technical particulars (As per GTP parameters uploaded on e- Tendering site.)

Schedule 'C' ... Tenderer Experience

The discrepancies, if any, between the specification and the catalogues and/or literatures submitted as part of the offer by the bidders, shall not be considered and representations in this regard will not be entertained.

15 Specification of LT Current Transformer : As per ANNEXURE- I.

16 Prototype & Drawings:- The successful tenderer have to manufacturer the prototype Unit for each rating as per this specification before bulk manufacturing. The tenderer should intimate the readiness of prototype to Chief Engineer (Distribution) ,Prakashgad, 5th floor, MSEDCL, Mumbai. The representative of C.E.(Distribution) will inspect the prototype on any day within 15 days from the date of readiness intimated. The inspection report of prototype jointly signed by manufacturer and MSEDCL

TECHNICAL SPECIFICATIONS OF THREE PHASE ENERGY METER BOX SUITABLE FOR
AUTOMATIC METER READING (AMR) OF DISTRIBUTION TRANSFORMER CENTRE (DTC)

representative along with the drawings shall be submitted by the tenderer to C.E.(Distribution). The Tenderers should submit the final drawings in line with this specification and prototype to C.E.(Distribution) for approval before bulk manufacturing. The approval of prototype & drawings shall be a responsibility of tenderer. No extra period will be allowed for getting approval of prototype and drawing & this will be inclusive in the period of delivery schedule given by the tenderer.

SCHEDULES:

The tenderer shall fill in the following schedules which are part and parcel of the tender specification and offer and submit along with the offer. If the schedules are not submitted duly filled in with the offer, the offer shall be rejected.

Schedule 'A' ... Guaranteed Technical particulars (As per GTP parameters uploaded on e- Tendering site.)

Schedule 'C' ... Tenderer Experience

The discrepancies, if any, between the specification and the catalogues and/or literatures submitted as part of the offer by the bidders, shall not be considered and representations in this regard will not be entertained.

ANNEXURE - I

SPECIFICATION FOR L.T. CURRENT TRANSFORMERS

- 1.0 Scope :- Specification covers the design, manufacture, Testing at works and supply of L.T. current transformers for use in connection with L.T. C.T. operated energy metering box in Electrical Distribution system in the State of Maharashtra. The system shall be A.C. 3 phase, 4 Wire, 415 Volts, 50 HZ with effectively grounded neutral.
 - 2.0 Standards:- Unless otherwise modified in this specification, the C.T. shall conform to IS:2705/1992 or its latest version thereof.
 - 3.0 **General Technical particular :-**
 - 3.1 Current transformer should be resin cast, ring type construction. Construction shall be single phase single core type. The internal diameters of the C.T. shall be in relevant with current ratings and as per requirement of current carrying capacity. For carrying out Short Time current test the primary shall be considered as fixed bar primary. The current density for copper bus-bar for primary shall be 1.6A sq.mm at primary rated current.
 - 3.2 Suitable mounting robust clamp as per manufacturer design shall be provided.
 - 3.3 Secondary terminal shall be of brass stud type. The size shall be minimum 6.0 mm dia 20 mm outside length with spring washer and double nuts.
 - 3.4 Current ratio of - / 5 A as per the requirement continuous maximum current shall be 120%.
 - 3.5 Rated voltage shall be Single Phase 240 V line to neutral (+15% to- 30%)
 - 3.6 Accuracy class of 0.5 as per IS.
 - 3.7 Rated burden shall be of 5 VA.
 - 3.8 The instrument security factor shall be less than or equal to 5.
 - 3.9 Rated short time current of 5 KA for 1 sec. Corresponding to rated dynamic peak current of 2.5 x 5 KA (peak) (As per relevant IS/IEC)
 - 3.10 The ratio, name of manufacture / monogram and year of manufacturing shall be engraved on the body of C.T. In addition name plate of anodized aluminium indicating the necessary details, year of manufacture etc. engraved on it shall be provided
-
-

in such a manner that the information is clearly visible after mounting.

3.11 The secondary and primary terminals shall be clearly marked as S1 & S2.

3.12 The bidders should submit the drawings of offered CTs.

4.0 Name Plate and Marking :-

Current transformer shall have a name plate clearly visible, effectively secured against removal and indelibly and distinctly marked with all essential particulars as per relevant stand. In addition to the requirement as per relevant standard following shall be marked on the name plate.

Purchase order No.

- 1) Month and year of manufacture
- 2) Name of purchaser i.e. M.S.E.D.C.L.
- 3) Five years Gurantee.

5.0 Type Tests:- The tenderer shall furnish detailed type test reports of the offered L.T. Current transformers along with offer for all the tests as per relevant standards. All the above type tests shall be carried out at laboratories which are accredited by the national Accreditation Board of Testing and Calibration Laboratories (NABL) of Government of India to prove that the Current transformers offered meet the requirements of the specification. These tests should have been carried out with 5 years prior to the date of opening of this tender.

The purchaser reserves the right to demand repetition of some or all the Type Tests in presense of purchaser's representative at purchasers cost. For this purpose, the tenderer shall quote unit rates for carrying out each Type Test. However such unit rates will not be considered for evaluation of the offer. In case the unit fails in the a type tests the complete supply shall be rejected.

The successful tenderer shall take approval of type test from C.E.(Dist.) MSEDCL, Prakashgad, Bandra, Mumbai prior to commencement of supply.

6.0 Acceptance Test: - All acceptance Tests as per IS : 2705 part 1 & part2.

7.0 Routine Test :- All routine tests as per IS : 2705 part 1 & part 2

TECHNICAL SPECIFICATIONS OF THREE PHASE ENERGY METER BOX SUITABLE FOR AUTOMATIC METER READING (AMR) OF DISTRIBUTION TRANSFORMER CENTRE (DTC)

- 8.0 **Guaranteed Technical Particulars:** - The tenderer should also furnish the particulars giving specific required details of CTs in Schedule 'A' attached. The offers without the details in Schedule 'A' stand rejected.
- 9.0 **Drawing:** - The bidder should submit the detail constructional drawing of the CTs along with the offer. The successful bidder should submit & get approved the drawing from the C.E.(Distribution) before commencement of supply No. extra period will be allowed for getting approval of drawing & this will be inclusive in the period of delivery schedule agiven by the tenderer.
- 10.0 **Guarantee:** - The CTs shall be guaranteed for the period of five years from the date of commissioning or five and half year from the date of dispatch whichever is earlier. The CTs found defective within the above guarantee period shall be replaced / repaired by the supplier free of cost within one month of receipt of intimation. If the defective CTs are not replaced / repaired within the specified period above, the Board shall recover an equivalent amount plus 15% supervision charges from any of the bills of the supplier.

SCHEDULE - "C"

TENDERER'S EXPERIENCE

Tenderer shall furnish here list of similar orders executed / under execution for supplying meters boxes by him to whom a reference may be made by purchaser in case he considers such a reference necessary.

<u>Sr. No.</u>	<u>Name of client</u>	<u>Order No. & date</u>	<u>Qty. ordered</u>	<u>Qty. supplied</u>
----------------	-----------------------	-----------------------------	---------------------	----------------------

NAME OF FIRM _____

NAME & SIGNATURE OF TENDERER _____

DESIGNATION _____

DATE _____

ANNEXURE - U-I

“INDEMNITY BOND”

UNDERTAKING TO BE SUBMITTED BY THE PARENT COMPANY SITUATED
ABROAD IN CASE OF THE PARTICIPANT BIDDER WHO IS AN INDIAN BASED
SUBSIDIARY ON GENERAL STAMP OF RUPEES 200/-

To,
The Executive Director (Stores),
Maharashtra State Electricity Distribution Co. Ltd.,
Prakashgad, Bandra (E),
Mumbai – 400 051.

Sub: - Undertaking against Tender _____ for procurement of _____

Dear Sir:

We, M/s. _____ having registered office at _____ are the Parent Company
of M/s. _____ who have participated against your tender No. _____ for
procurement of _____.

We have carefully read and have thoroughly understood and agree to the
terms and conditions of the subject tender.

We hereby undertake that in case of placement of order against the subject
tender on our subsidiary company, M/s. _____ in the event of we accept all
the responsibilities and liabilities for supply of quality meter box as per
specification of the tender and execution of the contract. We further
hereby undertake that we shall be responsible for any liability arising out
of the contract placed on M/s. _____ and to pay MSEDCL on demand the
sum of rupees as per agreement in the event of any breach of condition
of the purchase order, loss and damage of the material till expiry of guarantee
period as stipulated in the order. Our liability here under shall not be
impaired or discharged by extension of time or variation or alteration made
with or without our knowledge or consent by or between the parties to the
said contract. This undertaking shall be valid and binding on us upto and
including the execution and guarantee period of the order and shall not be
terminable by notice or change in the constitution of any of the companies.
In case of any dispute arising out of or in connection with this tender or
contract, if concluded, the same shall be subject to the exclusive
jurisdiction of the “Court in Mumbai
(India).”

Yours faithfully,

(Authorised Signatory)
FOR _____

TECHNICAL SPECIFICATIONS OF THREE PHASE ENERGY METER BOX SUITABLE FOR AUTOMATIC METER READING (AMR) OF DISTRIBUTION TRANSFORMER CENTRE (DTC)

SCHEDULE - "A"

GUARANTEED TECHNICAL PARAMETERS (TO BE FILLED ONLINE)

ITEM NAME	THREE PHASE ENERGY METER BOX SUITABLE FOR AUTOMATIC METER READING (AMR) OF DISTRIBUTION TRANSFORMER CENTRE (DTC)	
SR. NO.	GTP PARAMETERS	GTP VALUES
1.	MANUFACTURER'S / SUPPLIER'S NAME AND ADDRESS WITH WORKS ADDRESS	TEXT
2.	APPLICABLE STANDARDS	TEXT
3.	TYPE OF METER BOX, CRCA M.S. SHEET OR SMC	TEXT
4.	IF CRCA M.S. SHEET, (A) METER BOX IS PROVIDED WITH DEEP DRAWN PROCESS (YES / NO)	BOOLEAN
5.	(B) METER BOX PRE-TREATED / PHOSPHATED IN 7-TANK PROCESS (YES / NO)	BOOLEAN
6.	(C) SMOKE GREY COLOURED POWDER COATING OF 40 MICRON THICKNESS ON INNER & OUTER SIDE PROVIDED (YES / NO)	BOOLEAN
7.	(D) POWDER COATING IS WEATHER PROOF & CORROSION RESISTANT & SUITABLE FOR OUTDOOR USE (YES / NO)	BOOLEAN
8.	(E) METER BOX COMPLIES WITH THE REQUIREMENTS OF IP – 55 (YES / NO)	BOOLEAN
9.	(F) THICKNESS OF METER BOX	TEXT
10.	IF MADE FROM THERMOSETTING PLASTIC, I.E. GLASS REINFORCED POLYESTER SHEET MOULDING COMPOUND GRADE S-3, (A) METER BOX CONFIRMS TO IS: 13410 / 1992 &	BOOLEAN

TECHNICAL SPECIFICATIONS OF THREE PHASE ENERGY METER BOX SUITABLE FOR AUTOMATIC METER READING (AMR) OF DISTRIBUTION TRANSFORMER CENTRE (DTC)

	REQUIREMENT OF THIS SPECIFICATION (YES / NO)	
11.	(B) METER BOX MADE BY HOT PRESS COMPRESSION MOULDING PROCESS (YES / NO)	BOOLEAN
12.	(C) WHETHER SMC GRADE S3 IS USED FOR CONSTRUCTION OF METER BOX. (YES / NO)	BOOLEAN
13.	(D) SMC MATERIAL USED IS VIRGIN. (YES / NO)	BOOLEAN
14.	(E) SMC MATERIAL USED IS UV STABILIZED. (YES / NO)	BOOLEAN
15.	(F) METER BOX SHALL COMPLIES WITH MAGNETIC INFLUENCE OF AC / DC / 0.5 TESLA PERMANENT MAGNET (YES / NO)	BOOLEAN
16.	CONFIRM FLAMMABILITY AS V2 AS PER UL 94 / IS 1173 (YES /NO)	BOOLEAN
17.	CONFIRM HEAT DEFLECTION TEMPERATURE OF BASE > 150°C @ 1.8 MPA AS PER IS:13411, ANNEXURE 'H' / ISO 75 (YES /NO)	BOOLEAN
18.	CONFIRM GLOW WIRE TEST AT 850° C AS PER IS: 11000 (PART 2 / SECTION 1) / IEC-695-2-1 (YES /NO)	BOOLEAN
19.	CONFIRM BALL PRESSURE TEST AS PER IS: 14772/2000 / IEC 335 (YES / NO)	BOOLEAN
20.	CONFIRM 200 HRS UV AGEING TEST IS CARRIED OUT AS PER ASTM G53 (9.3). (YES /NO)	BOOLEAN
21.	CONFIRM WATER ABSORPTION VALUE \leq 0.25% AS PER IS: 14772 / 2000. (YES /NO)	BOOLEAN
22.	CONFIRM MECHANICAL STRENGTH \geq 50 MPA AS PER IS: 14772 / 2000. (YES /NO)	BOOLEAN
23.	CONFIRM FLEXURE STRENGTH \leq 155 MPA. (YES /NO)	BOOLEAN
24.	CONFIRM MODULUS OF ELASTICITY 12×10^2 MPA (YES / NO)	BOOLEAN
25.	CONFIRM IZOD IMPACT STRENGTH NOTCHED = 45 KJ /	BOOLEAN

TECHNICAL SPECIFICATIONS OF THREE PHASE ENERGY METER BOX SUITABLE FOR AUTOMATIC METER READING (AMR) OF DISTRIBUTION TRANSFORMER CENTRE (DTC)

	METER ² MINIMUM. (YES /NO)	
26.	CONFIRM MATERIAL SMC DOES NOT MELT TEST UPTO 400°C (YES / NO)	BOOLEAN
27.	2 PARTITIONS ARE PROVIDED (YES / NO)	BOOLEAN
28.	2 SEPARATE DOORS ARE PROVIDED (YES / NO)	BOOLEAN
29.	3 HOLES WITH RUBBER GLANDS OF I.D. 15 MM. PROVIDED IN THE PARTITION SHEET (YES / NO)	BOOLEAN
30.	DOORS HAVE LOCKING ARRANGEMENT (YES / NO)	BOOLEAN
31.	MODEM CAN BE INSTALLED IN THE BOX ABOVE 75 MM FROM THE METER TOP SIDE (YES / NO)	BOOLEAN
32.	MINIMUM INTERNAL DIMENSIONS OF METER BOX H X W X D	TEXT
33.	SHEET THICKNESS OF BASE OF METER BOX AT LOAD BEARING SIDE	TEXT
34.	SHEET THICKNESS OF BASE OF METER BOX EXCEPT AT LOAD BEARING SIDE	TEXT
35.	SHEET THICKNESS OF COVER OF METER BOX	TEXT
36.	MINIMUM INTERNAL DIMENSIONS OF THE METER BOX	TEXT
37.	DOOR WITH LOCKING ARRANGEMENT IS PROVIDED (YES / NO)	BOOLEAN
38.	INSIDE DIMENSIONS OF METER BOX ARE SUITABLE FOR INSTALLATION OF ALL TYPES OF METERS PURCHASED FROM VARIOUS METER MANUFACTURERS (YES / NO)	BOOLEAN
39.	COVER MADE OVERLAPPING TYPE HAVING COLLARS ON ALL FOUR SIDES (YES / NO)	BOOLEAN
40.	HINGES / STRIP HINGES ARE PROVIDED FROM INSIDE (YES / NO)	BOOLEAN

TECHNICAL SPECIFICATIONS OF THREE PHASE ENERGY METER BOX SUITABLE FOR AUTOMATIC METER READING (AMR) OF DISTRIBUTION TRANSFORMER CENTRE (DTC)

41.	HINGES ARE MADE OF 14 SWG M.S. SHEET & ARE 40 MM IN LENGTH FOR LOWER PARTITION & 60 MM IN LENGTH FOR UPPER PARTITION (YES / NO)	BOOLEAN
42.	DOOR OPENS FROM RIGHT TO LEFT BY 90 ⁰ (YES / NO)	BOOLEAN
43.	COLLAR OF DOOR OVERLAPS COLLAR OF BODY OF BOX BY 8 MM (YES / NO)	BOOLEAN
44.	COVER PROVIDED WITH SEMI CIRCULAR / CIRCULAR GOOD QUALITY NEOPRENE RUBBER GASKET OF 4 MM THICKNESS TO COMPLETELY FIT TO BASE (YES / NO)	BOOLEAN
45.	MATCHING WIRE SEALING HOLES FOR MSEDCL SEALING PURPOSE ARE PROVIDED (YES / NO)	BOOLEAN
46.	METER BOX CONFIRMS TO IP-55 (YES / NO)	BOOLEAN
47.	RUBBER LINING FIXED WITH ADHESIVE (YES / NO)	BOOLEAN
48.	TWO NUMBERS U-SHAPED LATCH ARRANGEMENT PROVIDED TO EACH COMPARTMENT (YES / NO)	BOOLEAN
49.	HOLE OF 2 MM DIAMETER PROVIDED ON U-SHAPED LATCH (YES / NO)	BOOLEAN
50.	ADDITIONAL HOLE OF 8 MM PROVIDED IN THE U-SHAPED LATCH FOR LOCKS (YES / NO)	BOOLEAN
51.	ALL HOLES ON U-SHAPED LATCH ALIGN WHEN LATCH IS IN CLOSED POSITION (YES / NO)	BOOLEAN
52.	2 WINDOWS WITH TOUGHENED / TRIPLEX GLASS FIXED WITH STAINLESS STEEL FRAME FROM INSIDE (YES / NO)	BOOLEAN
53.	MSEDCL LOGO PROVIDED ON WINDOW GLASS (YES / NO)	BOOLEAN
54.	GLASS FITTED IN FRAME WITH A WRAP AROUND SINGLE PIECE RUBBER RING WITHOUT JOINT MADE FROM GOOD QUALITY NEOPRENE RUBBER (YES / NO)	BOOLEAN

TECHNICAL SPECIFICATIONS OF THREE PHASE ENERGY METER BOX SUITABLE FOR AUTOMATIC METER READING (AMR) OF DISTRIBUTION TRANSFORMER CENTRE (DTC)

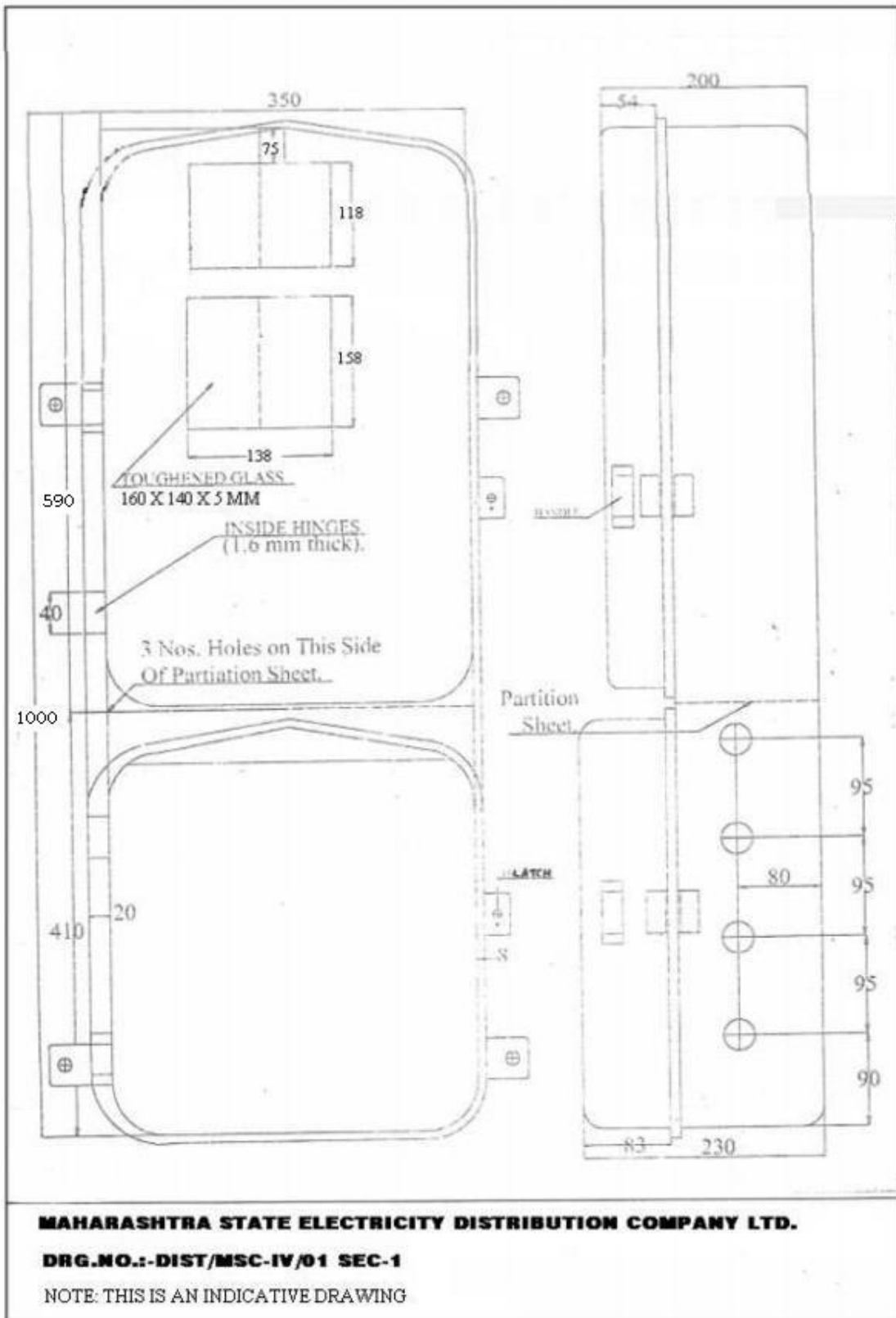
55.	SIZES OF WINDOWS AS PER SPECIFICATION (YES / NO)	BOOLEAN
56.	MOUNTING ARRANGEMENT OF METER, MODEM & ANTENNA IN METER BOX IS BY WAY OF ADJUSTABLE SLOTTED POLYMERIC BRACKETS / STRIPS AS PER SPECIFICATIONS (YES / NO)	BOOLEAN
57.	MOUNTING ARRANGEMENT RAISED FROM THE BASE OF BOX BODY BY 20 MM (YES / NO)	BOOLEAN
58.	SEVEN MOUNTING MS SCREWS, ONE FOR UPPER (M4 THREADS X LENGTH 12 MM) AND SIX SCREWS (M4 THREADS X 35 MM LENGTH WITH NUT) IN MOVING SLOTTED FLAT ARE PROVIDED (YES / NO)	BOOLEAN
59.	FOUR 40 MM WIDE & 3 MM THICK STRIPS OF L-SHAPE WELDED / FIXED ON THE BOX (YES / NO)	BOOLEAN
60.	4 NOS. HOLES WITH SUPERIOR QUALITY RUBBER CABLE GLANDS OF INTERNAL DIAMETERS 30 MM EACH ARE PROVIDED AT BOTH THE SIDE WALLS OF THE BOX (YES / NO)	BOOLEAN
61.	RUBBER GLANDS ARE FIXED WITH SUITABLE ADHESIVE SO THAT THE SAME DO NOT GET REMOVED (YES / NO)	BOOLEAN
62.	RUBBER GLANDS ARE MADE SUCH THAT INTERNAL DIAMETER OF GLANDS CAN BE CLOSED WITH RUBBER FILM OF APPROXIMATELY 3 MM THICKNESS (YES / NO)	BOOLEAN
63.	ALUMINIUM CONNECTORS ARE PROVIDED (YES / NO)	BOOLEAN
64.	CABLE CONNECTOR CONSISTS OF TWO ALUMINIUM STRIPS OF SIZE 10 MM X 55 MM (YES / NO)	BOOLEAN
65.	BOTH CABLE CONNECTOR STRIPS HAVE HOLES AT ENDS TO CLAMP WITH CABLE BY SCREWS & NUTS (YES / NO)	BOOLEAN
66.	4 CABLE CONNECTORS SETS WITH 4 MM ² CABLES CRIMPED WITH SUITABLE LUGS AT BOTH ENDS COMPLETE WITH SCREWS & NUTS ARE PROVIDED (YES	BOOLEAN

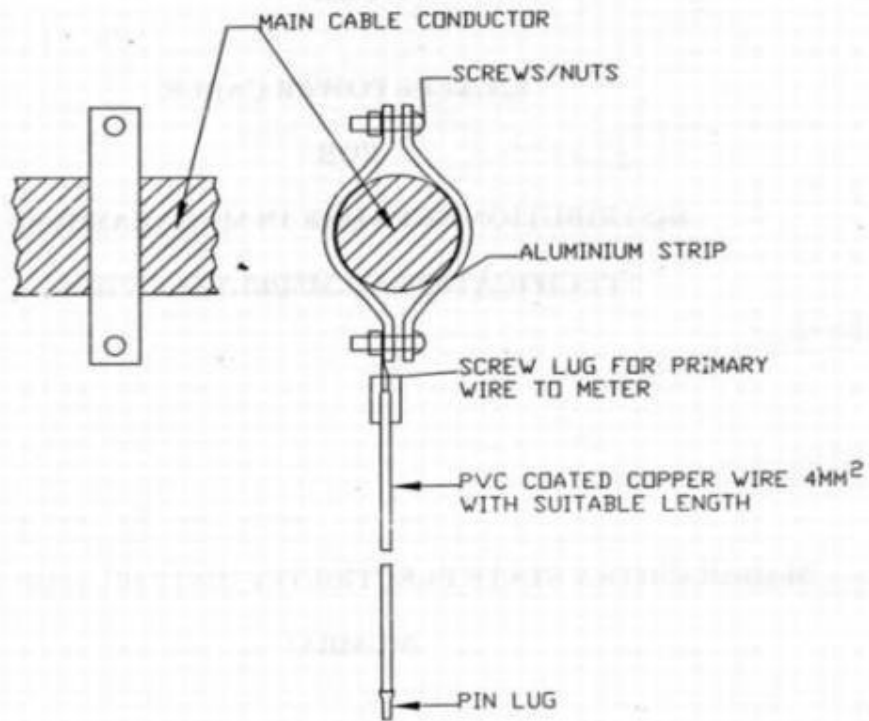
TECHNICAL SPECIFICATIONS OF THREE PHASE ENERGY METER BOX SUITABLE FOR AUTOMATIC METER READING (AMR) OF DISTRIBUTION TRANSFORMER CENTRE (DTC)

	/ NO)	
67.	CABLE CONNECTORS ARE INSULATED FROM OUTER SIDES WITH EPOXY INSULATION OF 2 MM THICKNESS (YES / NO)	BOOLEAN
68.	HANDLES ARE PROVIDED TO DOORS TO OPEN & CLOSE THE DOORS (YES / NO)	BOOLEAN
69.	TWO ZINC PASSIVATED WITHOUT POWDER COATING EARTHING BOLTS OF SIZE 25 X 8 MM ARE FITTED WITH THE BOX FROM INSIDE WITH 2 PLAIN WASHERS, 1 SPRING WASHER & TWO NUTS (YES / NO)	BOOLEAN
70.	ALL THE SCREWS AND WASHERS ARE PROPERLY ZINC PLATED (YES / NO)	BOOLEAN
71.	LIFE EXPECTED IS 5.5 YEARS (YES / NO)	BOOLEAN
72.	IN-HOUSE TESTING FACILITY AVAILABLE. (YES / NO)	BOOLEAN
73.	DETAILED DIMENSIONAL DRAWING SHOWING CLEARLY THE DIMENSIONS AND MATERIAL FOR METER BOX AND ITS CONSTRUCTIONAL FEATURES IS FURNISHED WITH THE OFFER (YES / NO)	BOOLEAN
74.	NAME PLATE AS PER SPECIFICATION (YES / NO)	BOOLEAN
75.	METER BOX IS TYPE TESTED (YES / NO)	BOOLEAN
76.	TYPE TEST REPORT NOS.	TEXT
77.	WHETHER YOU AGREE TO SUPPLY METER BOXES AS PER ANNEXURE – D, I.E. TECHNICAL SPECIFICATIONS OF THE TENDER (YES / NO)	BOOLEAN
78.	WHETHER TYPE TEST REPORTS ALONGWITH THE COPY OF THE SAME IN TWO CDS ARE SUBMITTED (YES / NO)	BOOLEAN
79.	QUALIFYING REQUIREMENTS (A) BIDDER HAVE TURNOVER OF 60% OF THE ESTIMATED COST OF THE TENDER DURING ANY ONE OF THE LAST THREE FINANCIAL YEARS (YES /	BOOLEAN

TECHNICAL SPECIFICATIONS OF THREE PHASE ENERGY METER BOX SUITABLE FOR AUTOMATIC METER READING (AMR) OF DISTRIBUTION TRANSFORMER CENTRE (DTC)

	NO)	
80.	(B) BIDDER HAVE SUPPLIED ONE LACS ENERGY METER BOXES DURING THE LAST THREE FINANCIAL YEARS (YES / NO)	BOOLEAN
81.	(C) BIDDER HAVE MINIMUM EXPERIENCE OF THREE YEARS OF SUPPLY OR MANUFACTURING FOR METER BOXES UPTO THE END OF THE LAST FINANCIAL YEAR (YES / NO)	BOOLEAN
82.	GTP CURRENT TRANSFORMER	
a.	MAKE AND TYPE OF CT	TEXT
b.	APPLICABLE STANDARDS	TEXT
c.	CT RATIO	TEXT
d.	ACCURACY CLASS	TEXT
e.	RATED BURDEN	TEXT
f.	INSTRUMENT SECURITY FACTOR	TEXT
g.	RATED SHORT TIME CURRENT	TEXT
h.	REATED DYNAMIC CURRENT	TEXT
i.	INSULATION CLASS	TEXT
j.	RATED CONTINUOUS MAXIMUM CURRENT	TEXT
k.	TYPE TEST REPORT NO.	TEXT





PRIMARY CABLE CONNECTOR ASSEMBLY

MAHARASHTRA STATE ELECTRICITY DISTRIBUTION COMPANY LTD.

DRG.NO.:-DIST/MSC-IV/03

NOTE: THIS IS AN INDICATIVE DRAWING