



Maharashtra State Electricity Distribution Company Limited

SPEC. NO. STORES: MSC-II/DT/63,100 (conv.) Non- CSP with metering /2011

TECHNICAL SPECIFICATION

FOR

**63, 100 kVA, 11/0.433 kV, 22/0.433 kV THREE PHASE DISTRIBUTION
TRANSFORMERS (Conventional) WITHOUT CSP FEATURE AND WITH DTC
METERING UNIT**

FOR

DISTRIBUTION SYSTEM

IN

MSEDCL

INDEX

Clause No.	Contents
1	Scope
2	System Particulars
3	Service Condition
4	Applicable Standards
5	Specific Technical requirement
6	Design & Construction
6.1	Core
6.2	Windings
6.3	Losses
6.4	Insulation Material & Clearances
6.5	Impedance Value
6.6	Tank
7	No CSP Protection
8	DTC metering Unit
9	Heat Dissipation and Total minimum oil volume
10	Conservator.
11	Breathers.
12	Terminals
13	Bushing and connections
14	Internal Connections
15	Tank base channel
16	Terminal Marking Plate & Rating Plate
17	Fittings
18	Lightning Arrestor
19	Transformer Oil
20	Tests & Inspection
21	Challenge Testing
22	Type Tests
23	Drawings
24	Rejection
25	Cleaning & Painting

26	Guaranteed Technical Particulars
27	Testing facilities
28	Submission of Routine Test Certificate
29	Stage Inspection
30	Testing for no load and full load losses of all distribution transformers
31	Random Sample Testing
32	Inspection & Testing of Transformer Oil
33	Quality Assurance
34	Qualifying Requirements
35	Final Inspection
36	Performance Guarantee
37	Cost Data Sheet
38	Schedule
Schedule A	Guaranteed and Other Technical Particulars
Schedule B	Tenderer's experience
Annexure-I	Air Pressure Test
Annexure-II	Unbalance Current Test
Annexure-III	Temperature Rise Test
Annexure –IV	Indicative drawings

MAHARASHTRA STATE ELECTRICITY DISTRIBUTION COMPANY

TECHNICAL SPECIFICATION

63, 100 kVA, 11/0.433 kV, 22/0.433 kV THREE PHASE DISTRIBUTION TRANSFORMERS (Conventional) WITHOUT CSP FEATURE AND WITH DTC METERING UNIT

SPEC. NO. STORES: MSC-II/DT/63,100 (conv.) Non- CSP with metering /2011

1 Scope:-

This specification covers design, manufacturing, testing and delivery of **63 kVA & 100 kVA, 11/0.433 , Oil immersed Oil Natural (ONAN), Outdoor type three phase Distribution Transformers (Conventional) without CSP feature and with DTC metering unit suitable for 11 & 22 kV, 50 Hz Distribution System.**

- 1.1 The equipment offered shall be complete with all parts necessary for their effective and trouble-free operation. Such parts will be deemed to be within the scope of the supply irrespective of whether they are specifically indicated in the commercial order or not.
- 1.2 It is not the intent to specify herein complete details of design and construction. The equipment offered shall conform to the relevant standards and be of high quality, sturdy, robust and of good design and workmanship complete in all respects and capable to perform continuous and satisfactory operations in the actual service conditions at site and shall have sufficiently long life in service as per statutory requirements.
- 1.3 The design and constructional aspects of materials shall not withstanding any anomalies, discrepancies, omissions, in-completeness, etc. in these specifications and will be subject to good engineering practice in conformity with the required quality of the product, and to such tolerances, allowances and requirements for clearances etc. as are necessary by virtue of various stipulations in that respect in the relevant Indian Standards, IEC standards, I.E. Rules, I.E. Act and other statutory provisions.
- 1.4 The Bidder/supplier shall bind himself to abide by these considerations to the entire satisfaction of the purchaser and will be required to adjust such details at no extra cost to the purchaser over and above the tendered rates and prices.
- 1.5 Tolerances:
The tolerance of guaranteed performance figures shall be as specified in the (Part-I) table 7 of latest issue of IS 2026 or relevant International Standard except wherever specified otherwise in this specification.

2 System Particulars:-

The transformers shall be suitable for outdoor installation with following system particulars and they should be suitable for service under fluctuations in supply voltage as permissible under Indian Electricity Rules

- 2.1 Nominal System Voltage : 11 kV or 22 KV
- 2.2 Corresponding Highest System Voltage : 12 KV or 22 KV
- 2.3 Neutral earthing : Solidly earthed

- 2.4 Frequency : 50 Hz with ± 3 % tolerance
- 2.5 Number of Phase : 3

3 SERVICE CONDITIONS:

3.1 Equipment supplied against the specification shall be suitable for satisfactory operation under the following tropical conditions:-

- | | | | |
|------|--|---|--|
| i | Max. ambient air temperature | : | 40 Deg. C |
| ii | Max. relative humidity | : | 100 % |
| iii | Max. annual rainfall | : | 1450 mm |
| iv | Max. wind pressure | : | 150 kg/sq.m. |
| v | Max. altitude above mean sea level | : | 1000 mtrs. |
| vi | Isoceraunic level | : | 50 |
| vii | Seismic level(Horizontal acceleration) | : | 0.3 g. |
| viii | Climatic Condition | | Moderately hot and humid tropical climate conducive to rust and fungus growth. |
| ix | Reference Ambient Temperature for temperature rise | : | 40 Deg C |

3.2 The climatic conditions are prone to wide variations in ambient conditions and hence the equipment shall be of suitable design to work satisfactorily under these conditions.

4 APPLICABLE STANDARDS:-

4.1 The design, manufacture and performance of the equipment shall comply with all currently applicable statutes, regulations and safety codes.

Nothing in this specification shall be construed to relieve the bidder off his responsibilities.

4.2 The Distribution Transformers shall conform to IS: 2026 as amended up to date or other International Standards for equal or better performance.

4.3 Unless otherwise specified, the equipment offered shall conform to latest applicable Indian, IEC, British or U.S.A. Standards and in particular, to the following:-

a.	IS 2026 (Part I,II,IV)/1997, (Part-III)/1981, (Part-V)/1994	Power Transformer
b.	IS:1180/1989 (Part-1)	Outdoor type, Three phase distribution transformers up to and including 100 kVA, 11KV
c.	IS:335/1993	New insulating oil- Specification (fourth revision)
d.	IS:2099/1986, IS: 7421-1988, IS:3347 (Part-I /Sec-2)-1979, IS:3347 (Part-I /Sec-1)-1982	Bushing

	amended up to date	
e.	IS 5	Colours for ready mixed paints and enamels.
f.	IS 13730 (Part-27)1996	Specification for particular types of winding wires.
g.	IS: 3073/1974, IS: 3070(Part-II)	Specifications for L.A's
h.	CBIP Publication No.295:2006	Manual on transformers
i.	I.S. 13947/I/1993	Specification for low voltage switchgear & control gear

4.4 In case of conflict arising out due to variations between the applicable standard and the standards specified herein the provisions of this specification should prevail.

5 Specific Technical requirement:

5.1 Standard kVA Ratings:-

The standard ratings for transformer shall be 63 kVA, 100 kVA.

5.2 Nominal voltage ratings

i Primary voltage : 11 KV/22 KV

ii Secondary voltage : 0.433 KV

5.2.1 Winding connections:-

i. H.V. Winding : Delta (Δ)

ii. L.V. Winding : Star (Y)

The neutral of the L.V. winding shall be brought out to a separate insulated terminal. The voltage group shall be Dyn-11.

5.3 Temperature Rise:

i The temperature rise for top oil over an ambient temperature of 40° C should be 45°C maximum (measured by thermometer in accordance with IS 2026).

ii Temperature rise for winding over an ambient temperature of 40° C should be 50° C maximum (measured by resistance method in accordance with IS 2026).

5.4 No load voltage ratio:-

The no load voltage ratio shall be 11000/433 Volts or 22000/433 Volts.

6 Design & construction

6.1 Core

i The core shall be stacked/ wound type

a) **For Stack core** :- The core shall be of high grade cold rolled grain oriented (C.R.G.O) annealed steel lamination having low loss and good grain properties, coated with hot oil proof insulation, bolted together to the frames firmly to prevent vibration or noise. All core

clamping bolts shall be effectively insulated. The complete design of core must ensure permanency of the core losses with continuous working of the transformers.

b) For Wound core :-

The core shall be 'C' type construction of high grade cold rolled grain oriented (C.R.G.O.) annealed steel lamination having low loss and good grain properties, coated hot oil proof insulation or Amorphous core material. The complete design of core must ensure permanency of the core losses with continuous working of the transformers. The core material shall not be brittle in case of CRGO material.

Core clamping for C.R.G.O./Amorphous Wound core type transformers shall be as follows:

1. Core clamping shall be with top and bottom U- shaped core clamps made of sheet steel clamped.
 2. M.S. core clamps shall be painted with oil-resistant paint.
 3. Suitable provision shall be made in the bottom core clamp / bottom plate of the transformer to arrest movement of the active part.
 4. Core clamping shall be done with 12mm diameter MS Tie rods.
- ii. The grade of core laminations shall be M4 or better.

The successful bidder, shall be required to submit the manufacturer's test report showing the Watt Loss per kg and the thickness of the core lamination, to ascertain the quality of Core materials.

The purchaser reserves the right to get sample of the core material tested at any Government recognized laboratory.

- iii. The transformer core shall not be saturated for any value of V/f ratio to the extent of 112.5% of the rated value of V/f ratio (i.e. 11000/50) (due to combined effect of voltage and frequency) up to 12.5% without injurious heating at full load conditions and will not get saturated. The bidder shall furnish necessary design data in support of this situation.
- iv. Flux density:-

Flux density should not be more than 1.55 Tesla for CRGO transformers and 1.38 Tesla for Amorphous Metal Core transformers at the rated voltage and frequency. The value of the flux density allowed in the design shall be clearly stated in the offer along with graph.

- v. The No load current at rated voltage shall not exceed the percentage given in Table below.

Sr. No.	kVA Rating	At Rated Voltage	At 112.5 % Rated Voltage
1	63 (CRGO)	3% of the full load current in LT winding	6 % of the full load current
2	100 (CRGO)	2.5 % of the full load current in LT winding	5 % of the full load current

3	63 (AMDT)	1.25 % of full load current in LV winding	3.5% of full Load Current
4	100 (AMDT)	1.1 % of full load current in LV winding	3.0 % of full Load Current

i. Number of steps of core shall be minimum of

For 63 kVA	5 standard steps
For 100 kVA	5 standard steps

6.2. Winding:-

j. Materials:

Double paper covered Aluminum conductor shall be used for HV and LV winding for 11 kV class and Double paper covered copper conductor shall be used for HV and LV winding for 22 kV class.

ii Current Density:

Current density for HV and LV winding should not be more than 2.8 A/sq. mm for Copper and 1.6 A / sq.mm for Aluminum conductor.

iii L.V. Neutral formation shall be at top.

6.3 Losses :

The No load Losses and Load Losses of 63 kVA &100 kVA, 11 /0.433 kV and 22/ 0.433 kV transformers at rated voltage and rated frequency are specified as follows:

TABLE – 1

KVA Rating	Voltage Ratio in kilovolts	No Load Losses (in Watts)	Load Losses at 75 ° C (in Watts)
63 (CRGO)	11/0.433	180	1235
63 (CRGO)	22/0.433	230	1400
63 (AMDT)	11/0.433	50	1235
100(CRGO)	11/0.433	260	1760
100 (CRGO)	22/0.433	300	1850
100(AMDT)	11/0.433	66	1760

The tolerances as per IS-2026 (Part-I) 1977 amended up to date is applicable to the losses of 22/0.433 kV distribution transformers and no tolerance is applicable to the losses of 11/0.433 kV distribution transformers as per IS:1180 (part 1) amended upto date. In case the actual losses exceed the guaranteed losses, the transformers shall be rejected at the risk, cost and responsibility of the supplier.

The values guaranteed in G.T.P. for flux density, no load current at rated voltage, no load current at 112.5% of rated voltage and no load loss at rated voltage shall be individually met.

6.4 Insulation material & clearances:

- i Materials - Makes of Electrical grade insulating craft paper, Press Board, Perma wood/ Haldi wood insulation shall be declared in GTP by the bidder. The test reports for all properties as per relevant I.S. amended up to date shall be submitted during inspection.
- ii The electrical clearance between the winding and body of the tank (between inside surface of the tank and outside edge of the windings) should be minimum 30 mm and 40 mm for 11 kV and 22 kV class respectively.

Minimum external clearances of bushing terminals

		<u>11 kV</u>	<u>22 kV</u>
HV	Ph to Ph	255 mm	330 mm
	Ph to E	140 mm	230 mm
LV	Ph-to-Ph	75 mm.	75 mm
	Ph to E	40 mm.	40 mm

6.5 Impedance Value-

The percentage impedance at 75 ° C. shall be 4.5% for 11 kV and 5.0% for 22 kV (IS tolerance of ± 10 % is applicable).

6.6 Tank

- 6.6.1 The transformer tank shall be made up of prime quality M.S. sheets of **rectangular** shape. No other shape will be accepted. The transformer tank shall be of robust construction. All joints of tank and fittings should be oil tight and no bulging shall occur during service. The tank design shall be such that the core and windings can be lifted freely. The tank plates shall be of such strength that the complete transformer when filled with oil may be lifted bodily by means of the lifting lugs provided. Tank inside shall be painted by varnish. Top cover plate shall be slightly sloping; approximately 5 to 10 deg. towards HV bushing and edges of cover plate should be bent downwards so as to avoid entry of water through the cover plate gasket. The width of bend plate shall be 25 mm min. The top cover shall have no cut at point of lifting lug. The rectangular tank shall be fabricated by welding at corners.
- 6.6.2 The transformer tank of corrugation is also acceptable, however shape of tank shall be rectangular only. The corrugation sheets thickness shall be of minimum 1.6mm. Corrugation panel shall be used for cooling. The transformer shall be capable of giving continuous rated output without exceeding the specified temperature rise. Bidder shall submit the detailed calculation sheet alongwith offer. The safe guard angle frame 50X50X5 mm shall be welded for corrugated side to the tank.
- 6.6.3 In rectangular shape tanks, horizontal or vertical joints in tank side walls and its bottom or top cover will be not allowed. In addition the cover of the main tank shall be provided with an air release plug.

Side wall thickness : 3.15 mm. (min.)

Top and bottom plate thickness : 5 mm. (min.)

- 6.6.4 Reinforced by welded angle 50X50X5 MM on all the outside walls on the edge of tank to form two equal compartments. The permanent deflection is not more than 5mm up to 750 mm length and 6mm up to 1250 mm length when transformer tank without oil is subject to air pressure of 35 KPa above atmospheric pressure for 30 min. Pressure test shall be performed carefully at the time of 1st stage inspection only to confirm the adequacy of reinforcement angle and gauge of the tank and certified by E.E. (IW).
- 6.6.5 All welding operations to be carried out by MIG process.
- 6.6.6 Lifting lugs: 2 nos. welded heavy duty lifting lugs of MS plate of 8mm thickness suitably reinforced by vertical supporting flat of same thickness as of lug welded edgewise below the lug on the side wall, up to reinforcing angle. They shall be so extended that cutting of bend plate is not required. 2 nos welded heavy duty lifting lugs of MS Plate of 8 mm thickness should be on the top plate of transformer.
- 6.6.7 Pulling lugs: 4 nos. of welded heavy duty pulling lugs of MS plate of 8mm thickness shall be provided to pull the transformer horizontally.
- 6.6.8 Top cover fixing bolts: GI nut bolts of 3/8” dia. with one plain washer shall be used for top cover fixing, spaced at 4” apart. 6mm neoprene bonded cork oil resistance gaskets conforming to type B/C IS 4253 Part-II amended up to date will be placed between tank and cover plate.
- 6.6.9 Vertical clearance: - The height of the tank shall be such that minimum vertical clearance up to the top cover plate of 120 mm is achieved from top yoke.
- 7.0 CSP Protection: No CSP feature is not required.

8.0 Tamper proof DTC METERING UNIT :

Tamper Proof DTC Metering Unit shall be manufactured in accordance with the following Standards (as per drawing enclosed) **Annexure –IV**.

The Metering unit shall comply with the requirement of **IS:2147/1962** for Degree of Protection **I.P. 54**.

General Technical Particulars:

This outdoor type Metering Unit shall be designed and fixed on the LV bushing side of the main transformer tank. General arrangement of Metering Unit shall be kept as per drawing covering the above aspect is enclosed at Annexure –IV. The overall dimensions of enclosure shall be such that it should accommodate the LV Bushings, Three Ring Type CTs of rating 200/5 A, for 100kVA & 150/5 A for 63 kVA transformers, one LT CT operated Static TOD meter.

1. In First chamber-

The first chamber shall be provided as an enclosure to transformer L.V. bushings and CTs as shown in diagram. The required minimum electrical clearances as per relevant IS, shall be maintained while providing / fixing the box. The suitable rubber gasket shall be provided between transformer body and enclosure so as rain water shall not enter in the chamber.

Three CTs of 5VA burden & class of accuracy 0.5 shall be mounted on fixed arrangement inside the chamber for each phase as shown in the drawing. The inner diameter of CTs shall be suitable

to cover the cable size. CTs should be magnetically shielded and fixed inside the enclosure with suitable nut bolts & washers.

Minimum 2.5 sq. mm. copper multistranded (flexible) wire shall be used for connections from CT secondary terminals to Meter & P.T connections.

The Enclosure shall be fabricated by using CRCA sheet steel of 14 SWG (2mm) thickness & shall comply with the requirement of I.P.-54 as per [IS:2147/1962](#).

2. Second Chamber:

The energy meter shall be fixed on suitable arrangement keeping minimum clearance of 50 mm from the tank surface. The clearances from Meter front side to enclosure shall be minimum 50 mm.

The Meter fixing arrangement shall be such that front and back as well as up and down with tilting adjustment can be done to accommodate various type & make of meter (s). Also suitable space shall be provided to install GSM MODEM alongwith the Antenna for future communication with the meter.

Note : MSEDCL shall install any **reputed** make 3 phase, 4 wire static LT CT operated TOD energy meters in the metering box.

Constructional main features of the Metering Unit are as under:

1. The single door panel shall be provided with 5 mm thick triplex glass window of size 150 mm x 115 mm – 1 nos for second chamber to facilitate meter reading.
2. One 6 mm isolated Earth Terminal in second chamber at side of the box.
3. Each LT Bushing provided with 2 nos. washer for lugs tightening.
4. Cam lock shall be provided to each chamber door with separate keys. The Two keys set shall be supplied with each unit. e.g. Godrej cam lock.
5. 2 nos. earthing bolt size 25x10 mm each with 2 nos washer and one nut to be provided
6. 3 nos earth sticker with earth symbol to be provided.
7. 4 nos suitable size lugs for 70/ 120 sq.mm, 31/2 core PVC Al.Cable shall be provided
8. Danger marking 125 x 38 mm with Marathi language with 433 V AC.
9. Flat gasket of size 20 x 2 mm to be fixed with adhesive (fevibond) inside door
10. Inside hinges to be MIG welded strictly (NO SPOT WELDING).
11. CT secondary & PT wires with proper lugs shall be connected to meter terminals.
12. Single panel doors for chamber 1 & 2.
13. Arrangement to be provided for holding the panel door manually
14. The sizes of each compartment & overall size shown are minimum and may be more to suit the size of Transformer Tank and LT bushings.

15. The complete metering unit shall be as per Drawing enclosed so fitted with the transformer that a gap of minimum 50 mm is maintained from the transformer tank & the unit for free circulation of air & fitted towards the ground so that it is possible to take readings from a distance of 2 to 3 meters.
16. The suitable cable glands shall be provided in first chamber for 3/12 cables.
17. Cable holding clamp shall be provided as shown in diagram. The cable holding clamp support shall be welded on transformer tank.

Note: 1) All dimensions are in mm.

2) Chamber no.1& 2 Door - front open back

3) Sheet steel thickness: 2 mm (min)

4) Paint shade : Exterior & interior – Aircraft Blue at shade No 108 of IS 5.

5) Degree of enclosure protection IP : 54.

9.0 A) Heat Dissipation:

- a. Heat dissipation by tank walls excluding top and bottom should be **500 W/ sq.m.**
- b. Heat dissipation by fin type radiator 1.25 mm thick will be worked out on the basis of manufacturers data sheet. The tenderer shall submit the calculation sheet with the offer or the offer shall stand rejected.
- c. Two nos. radiators shall be provided only on HV side and shall be of fin type. They should be fixed at right angle to the sides and not diagonally. The size of the radiator shall be such that it covers at least 50% of the bottom yoke, full core and complete top yoke.

B) Total Minimum Oil Volume :

Sr.No.	KVA rating	Voltage Ratio in Volts	Oil in liters (exclusive of oil absorbed in core & coil assembly)
1	63 kVA	11000/433	155
2	100 kVA	11000/433	190
3	63 kVA	22000/433	165
4	100 kVA	22000/433	200

Note: The firm should maintain the oil volume in all supplied transformers as mentioned above.

10.0 Conservator:

- a) The total volume of conservator shall be such as to contain 10% of total quantity of oil. Normally 3% quantity of the total oil will be contained in the conservator. Dimension of the conservator shall be indicated on the General Arrangement Drawing.
- b) Oil level indicator shall be provided on the side which will be with fully covered detachable flange with single gasket and tightened with MS nut-bolt.
- c) The inside diameter of the pipe connecting the conservator to the main tank shall be within 20 to 50 mm and it should be project into the conservator in such way that its end is approximately 20mm above the totem of the conservator so as to create a sump for collection of impurities. The minimum oil level (corresponding to (-) 5 deg.) should be above the sump level.

- d) The pipe from conservator tank connecting to main tank shall be of 30 mm (min.) dia and shall have a slopping flap so that the oil falling from the pipe shall not fall directly on the active job and shall fall on the side walls only.
- e) The conservator shall be provided with the drain plug and a filling hole (30mm dia) with cover.

11.0 Breather:

Breather joints will be screwed type. It shall have die-cast aluminum body or of Poly propylene materials and inside container for silica gel shall be of tin sheet, in case of aluminum die cast breather. Makes of the breather shall be subject to purchaser's approval. Volume of breathers shall be suitable for 250 gm. of silica gel. The make and design of breather shall be subject to approval of C.E. (Stores).

12.0 Terminals:

- a. **Brass rods 12 mm. diameter for HT** with necessary nuts, check-nuts and plain thick tinned washer.
- b. **Tinned Copper Rods of 12 mm diameter** for 63/100 kVA distribution transformers for LT extension with suitable cable lugs, necessary nuts, check-nuts and plain thick tinned washer.

13.0 Bushings & Connections:

- 13.1 For 11 kV class 12 kV bushing, for 22 kV class 24 kV bushing shall be used and for 433 volts 1.0 kV bushing shall be used. Bushings of the same voltage class shall be interchangeable. Bushings with plain shed shall be as per relevant IS:3347 amended up to date. HV bushings shall be mounted on the top of the transformer tank & LV bushings shall be mounted on side of the transformer tank.
- 13.2 HV bushings shall be mounted on curvature shaped embossed plate, in such a way that all H.V. Bushings shall remain parallel and at equi-distance throughout. Bushings having type tested, as per relevant IS amended up to date shall only be acceptable.
- 13.3 The minimum creepage distance for both HV & LV Bushings shall not be less than 25 mm per kV.

14.0 Internal connections:

14.1 H.V. Winding :

- i. In case of H.V. winding all jumpers from winding to bushing shall have cross section larger than winding conductor.
- ii. Inter coil connection shall be by crimping and brazing.
- iii. In case of Copper Winding Delta joints shall be with crimping and Brazing only.
- iv. Lead from delta joint shall be connected to bushing rod by brazing only.

14.2 L.V. Winding :

- i. L.T. Star point shall be formed of Aluminium/Copper flat of sufficient length. Lead from winding shall be connected to the flat by crimping and brazing.

- ii. Firm connections of L.T. winding to bushing shall be made of adequate size of 'L' shaped flat. Connection of L.T. Coil lead to 'L' shape flat shall be by crimping and brazing. Alternatively 'L' shape lug of adequate capacity effectively crimped shall be acceptable.
- iii. 'L' shape flat/lug shall be clamped to L.V. Bushing metal part by using nut, lock-nut and washers.
- iv. For Aluminum windings, L&T Alkapee aluminum brazing rods with suitable flux shall be used. For copper winding crimping and silver brazing alloy shall be used.

15.0 Tank base channel :

It should be of two numbers of 75 mm x 40 mm channel for 63 kVA and 100 kVA transformers.

16.0 Terminal Marking Plates and Rating Plates :

Terminals shall be provided with terminal marking plates. The transformer shall be provided with riveted rating plate of minimum 18 SWG aluminum anodized material sheet in a visible position. The entries of the rating plate shall be indelibly marked (i.e. by etching, engraving or stamping).

Marking as 'M.S.E.D.C.L'S and 'Sr. No.' of transformer shall be engraved on transformer main tank below L.T. bushings.

The name of the company, order No., capacity, month and year of manufacturing shall be engraved on separate plate which shall be firmly welded to main tank and shall form integral part of the tank.

17.0 Fittings:

The fittings on the transformers shall be as under:

1	Rating and diagram plate	1 no.
2	Earthing terminals with lugs.	2 no.
3	Lifting lugs	4 no. (2 nos to top plate of transformer and 2 nos of transformer tank
4	Oil filling hole with cap(on conservator)	1 no
5	Drain valve - 20mm for all T/Fs	1 no
6	Conservator with drain plug.	1 no
7	Thermometer pocket	1 no
8	Explosion vent (Only for 22 kV T/F)	1 no
9	Silica gel breather (250 gms)	1 no
10	Platform mounting channel	2 no
11	Oil level gauge indicating 3 positions of marking as below :	1no
	Minimum (-) 5 deg.C.	
	Normal 30 deg.C	
	Maximum 98 deg.C.	

12	HT & LT bushing	3 nos. of HT bushing and 4 nos. of LT bushing shall be provided. Each bushing (HV & LV) should be provided with 3 nos. of brass nuts and 2 plain brass washers.
13	Radiators	As per Cl. No. 8 (C)
14	Lightening Arrestors for HV Bushings	3 nos
15	Pulling lugs	4 nos
16	Metallic cover spot welded to tank for drain valve shall be provided.	-
17	CSP feature operating handle	Not Applicable
18	DTC metering Unit	1 No.

18.0 Lightening Arrestors:

The Lightening Arrestors (Disconnecter type) of high surge capacity of 9 kV(Vrms), 5 kA(8/20 micro wave shape) for 11 kV class transformers and 18 kV(Vrms), 5 kA (8/20 micro wave shape) for 22 kV class transformers conforming to IS: 3070/1974 shall be mounted on the HV bushings of transformer, clamped securely to the tank, to protect the transformer and associated line equipment from the occasional high voltage surges resulting from lighting or switching operations. The earthing terminal of the lightening arresters shall be grounded separately.

19.0 Transformer Oil

Transformer oil to be used in all the Distribution transformers shall comply with the requirements of latest IS 335/1983 amended up to date thereof. In addition the oil should conform to 'Ageing Characteristics' specified below for New Oil and Oil in Transformers. Type test certificates of oil being used shall be produced to EE (IW) at the time of stage inspection.

New oil - Ageing characteristics after accelerated ageing test 96 hrs at 115° C (open beaker method with copper catalyst):

i. Specific Resistance (Resistivity)

a) at 20 ° C :- 2.5×10^{12} Ohm-Cm (Min)

b) at 90 ° C :- 0.2×10^{12} Ohm-Cm (Min)

ii. Dielectric dissipation factor - 0.20 (Max.tan delta) at 90 ° C.

iii. Total acidity mg/KOH/gm - 0.05 (Max)

iv. Total sludge value (%) by weight - 0.05 (Max.)

v. The method of testing these aging characteristics is given in Appendix - C of IS 335 amended up to date.

vi. Oil filled in Transformers:

The important characteristics of the transformer oil after it is filled in the transformer (within 3 months of filling) shall be as follows: -

Sr.No.	Characteristics	Specifications
1.	Electric Strength (Breakdown voltage)	30 kV (Min)
2.	Dielectric dissipation factor (Tan Delta) at 90 deg.C.)	0.01 (Max)
3.	Specific Resistance (Resistivity) at 27 deg. C (ohm-cm)	10×10^{12}
4.	Flash Point, P.M. (closed)	140 ° C (Min)
5.	Inter facial tension at 27 ° C.	0.03N/M (Min)
6.	Neutralization value (total acidity)	0.05Mg.KOH/gm (Max.)
7	Water content PPM	35 (Max)

20.0 Test and Inspection:-

20.1 Routine Tests:-

- i. All transformers shall be subjected to the following routine tests at the manufacturer's works. The tests are to be carried out in accordance with the details specified in IS 2026 or as agreed upon between the purchaser and the manufacturer.
 1. Measurement of winding resistance.
 2. Ratio, polarity and phase relationship.
 3. Impedance voltage.
 4. Load losses.
 5. No-load losses and No-load current.
 6. Insulation resistance.
 7. Induced over voltage withstand.
 8. Separate source voltages withstand.
- ii. All the routine tests shall be conducted in the suppliers' laboratory at their cost.
- iii. Heat run test shall be arranged free of cost on the unit selected from the 1st lot by Executive Engineer / Authorized Representative.
- iv. The calculations to confirm the thermal ability as per Clause no. 9.1 of latest IS: 2026 Part-I or equivalent International Standard shall be submitted to Executive Engineer (IW).

21.0 Challenge Testing:

The manufacturer can also request challenge testing for any test based on specification and losses. The challenger would request for testing with testing fees. The challenge test fees are proposed at least three times the cost of testing. This is likely to deter unnecessary challenges. The challenger would have the opportunity to select the sample from the store and any such challenge should be made within the guarantee period. The party challenged, challenger and the utility could witness the challenge testing.

The challenge testing would cover following tests:

1. Measurement of magnetizing current.
2. No load losses test.
3. Load losses test (at 50 % loading or as per acceptance test).
4. Temperature rise test.

The challenge test could be conducted at NABL Laboratory, like ERDA and CPRI. If the values are within the limits the products gets confirmed else not confirmed. No positive tolerances in losses is permitted. If the product is not confirmed the manufacturer would pay the challenge fee and challenger would get the fee refunded. However as a redressal system the challenger would be allowed to ask for fresh testing of two or more samples from the store and the same be tested in NABL Laboratory in presence of party challenge, challenger and the utility.

If any one of the above sample does not confirm the test, then the product is said to have failed the test. In such cases the manufacturer will be declared as unsuccessful manufacturer for the said product with wide publicity and would not allow to complete in tenders of the MSEDCL for the period of three years and heavy penalty would be imposed.

22.0 Type Tests:-

- 22.1 In addition to routine test as above Impulse voltage Withstand test and Dynamic Short Circuit Test as under shall be successfully carried out at laboratories accredited by National Accreditation Board for Testing and Calibration Laboratories (NABL) in accordance with IS 2026/1977 as amended from time to time and technical specifications, within the last 5 (five) years prior to the date of offer. The bidder shall furnish the following type tests reports (along with General arrangement drawing, Core & Core details, Internal construction, HV& LV Bushing Assembly and Rating and Diagram Plate drawings) along with the offer.
- i. Impulse Voltage with stand Test shall be carried out as per Clause No. 13 of IS 2026 (Part-III)/81 on all three HV phases chopped on tail. Impulse Voltage shall be 75 kVp for 11 kV class transformers.
 - ii. Dynamic Short circuit Test
- 22.2 The following balance type test should be carried at the manufacturer's works invariably in the presence of MSEDCL's representative at the time of inspection from the first lot.
- i. Temperature Rise Test
 - ii. Air pressure test as per clause no. 22.5 of IS:1180 (Part I)/1989
 - iii. Unbalanced current test – unbalanced current should not be more than 2% of full load current
- 22.3 The type test reports should be submitted and got approved from the Chief Engineer (Stores) before commencement of supply.
- 22.4 In case of any of the following, the offer may be considered for placement of order.
- i. If above tests are carried out beyond 5 years
 - ii. Impulse Voltage Withstand test and Dynamic Short Circuit test carried out not from NABL approved Laboratory.
 - iii. If there is any change in the design/ type of old type tested transformers to be offered against this specification.

However, successful bidders have to carry out the type tests at the laboratories accredited by NABL before commencement of supply at their own expense on the sample drawn by the purchaser from the lot offered for first Stage Inspection.

- 22.5 In respect of the successful bidder, the purchaser reserves the right to demand repetition of some or all the type tests in presence of the purchaser's representative. In case the unit fails in the type tests, the complete supply shall be rejected. The bidders are therefore requested to quote unit rates for carrying out each type test, which however, will not be considered for evaluation of the offer.

23.0 Drawings:-

- 23.1 A set of following drawings with all dimensions shall be submitted by the Bidder along with the offer:

- i. General Dimensional.
- ii. Core & Core Details (technical Details).
- iii. Internal Construction.
- iv. Rating & Diagram Plate.
- v. HV/LV Bushings Assembly indicating measurement of creepage distances.
- vi. Operation and Maintenance Manual.
- vii. Outline General Arrangement for kVA Dist. Transformer -MSEDCL/MMII/63-100DT/01
- viii. Meter Box & C.T. Mounting Box Arrangement for 63&100 kVA Dist. Transformer MSEDCL/MMII/63-100DT/02.
- ix. Meter Box & C.T. Mounting Box Arrangement for 63&100 kVA Dist. Transformer - MSEDCL/MMII/63-100DT/03.
- x. Meter Box with Meter for 63&100 kVA Dist. Transformer - MSEDCL/MMII/63-100DT/04.

- 23.2 The drawings shall be of A-3 (420 x 297 mm) size only. The bidder should also supply along with his offer the pamphlets/literatures etc. for fittings / accessories. Indicative Drawings are attached with the technical specifications for ready reference.

- 23.3 The bidder should not change design once offered as per A/T, Approved drawings and Type Test Reports.

- 23.4 The successful Bidders shall submit complete set of Drawings (as listed in Cl.No.23.1) of transformer in triplicate indicating dimensions to CE (Stores) for approval and get approved before commencement of supply.

24.0 Rejection :-

- 24.1 Apart from rejection due to failure of the transformer to meet the specified test requirements the transformer shall be liable for rejection on any one of the following reasons.

- i. At 50 % & 100% Loading condition, total losses exceeds the specified values mentioned in Cl. No.6.3 above.
- ii. Impedance voltage value exceeds the Guaranteed value plus tolerances as mentioned at Cl.No.6.5 above.
- iii Type test are not carried out as per clause no. 22.0 of the specification.
- iv. Drawings are not submitted as per clause no. 23.0 of the specification.
- v. GTP not submitted as per clause no. 26.0 of the specification.
- vi Heat dissipation calculation sheet are not submitted as per clause no.8.0 of the specification.

25.0 Cleaning and Painting.

- i. The surface of the tank shall be properly pre-treated / phosphated in a seven tank process and shall be applied with a powder coating of 40 micron thickness. The powder coating shall be of **Aircraft Blue colour (shade No. 108)** for transformers. Powder coating shall be suitable for outdoor use conforming IS: 13871/1993 – Powder coatings. The seven tank process facility shall be enhance to ensure proper quality for outdoor application.
- ii. The month and year of supply shall be painted in **Red bold Marathi** lettering at two places, one on conservator and other at sum conspicuous place on the transformer which shall be clearly visible from the ground.

26.0 Guaranteed & Technical Particulars:

The bidder should fill up all the details in GTP parameter list, the statement such as “as per drawings enclosed”, “as per MSEDCL’s requirement” “as per IS” etc. shall be considered as details are not furnished and such offers shall liable for rejection.

27.0 Testing facility

The bidder should have adequate testing facility for all routine and acceptance tests and also arrangement for measurement of losses, resistance, etc. details of which will be enumerated in the tender.

28.0 Submission Routine Test Certificate

- a. The successful bidder shall submit the routine test certificate along with documentary evidence for having paid the Excise Duty for the following raw materials viz. Oil, Aluminum, copper for conductors, insulating materials, core materials, bushings at the time of routine testing of the fully assembled transformer
- b. The successful bidder shall be required to submit 5 copies of instruction and Operation manual for each lot of 100 Transformers (or part thereof) supplied. This instruction manual should give complete details about the pre-commissioning tests/checks and the details of preventive maintenance etc.

29.0 Stage Inspection :-

- 29.1 Supplier shall give 15 days’ advance intimation to the Chief Engineer (Stores.) and S.E. (Store/Adm) to organize stage inspection in which assembly of core, windings and other core materials etc. would be inspected. In respect of raw materials such as core stamping, winding

conductor, oil etc. successful bidder shall use these materials manufactured/supplied by the standard manufacturers and furnish the manufacturer's test certificates, as well as, proof of purchase from those manufacturers documentary evidence for having paid the excise duty for the information of the department.

- 29.2 Chief Engineer (Stores) will depute representatives from inspection wing and testing division at the time of stage inspection.
- 29.3 10 % of the transformers from the offered lot will be tested for acceptance tests at factory, in the presence of purchaser's representative before dispatch.
- 29.4 The inspection may be carried out by the purchaser at any stage of manufacture. The successful bidder shall grant free access to the purchaser's representatives at a reasonable time when the work is in progress. Inspection and acceptance of any equipment under this specification by the purchaser shall not relieve the supplier of his obligation of furnishing equipment in accordance with the specifications and shall not prevent subsequent rejection if the equipment is found to be defective.
- 29.5 The purchaser may at its option, open a transformer supplied to the Stores, in presence of supplier at site or at Stores. If any of the technical particulars are seen to be in variance than the guaranteed technical particulars, the whole lot of transformer will be rejected without any liability on purchaser.
- 29.6 In addition to the above, the purchaser may pick up any transformer and decide to get it type tested from any laboratory accredited by NABL at purchaser's cost. The Bidder will have to organize packing of the transformer at company's Stores for which they will be paid necessary charges. If the transformer fails to meet the requirement of type tests, the quantity of transformers ordered on them will be forthwith rejected and the purchaser may purchase these transformers at the risk and cost of the supplier.

30.0 Testing for no load and full load losses of all Distribution Transformers:

After inspection of new transformers at factory for acceptance of the lot, all distribution transformers from the lot will be tested for no load and full load losses at all stores. Tenderer has liberty to be present at the time of testing.

31.0 Random Sample Testing (RST)

The tenderer should intimate to C.E. (Stores), M.S.E.D.C.L of completion of dispatches of whole lot of Distribution Transformers to stores against this tender. C.E. (Stores), M.S.E.D.C.L for will select the stores for Random Sample Testing (RST) and depute E.E. (Testing) to carry out RST of the lot.

E.E. (Testing) will select a transformer from the lot of transformers already tested for No load & full load losses. 15 days advance intimation will be given to tenderer for joint inspection. The date of RST will not be altered to the convenience or request of supplier. If supplier's representative fails to attend on the date fixed for RST, the RST will be carried out in his absence and results of RST will be binding on supplier. In case the selected transformer fails in any of the tests, complete lot of transformers will be rejected.

32.0 Inspection & Testing of Transformer Oil:

The tenderer shall make arrangements for testing of transformer oil to be used in the transformers and testing will be done in presence of purchaser's representative.

To ascertain the quality of transformer oil, original manufacturer's test report should be furnished to EE (Testing) at the time of factory inspection for acceptance of the lot.

33.0 Quality Assurance:

- 33.1 The bidder shall invariably furnish following information along with the offer failing to which the offer will be rejected.
- 33.2 Certificates of following materials.
- i. Aluminium and copper conductor
 - ii. Transformer oil
 - iii. Core
 - iv. Insulating paper.
 - v. Porcelain Bushings
 - vi Steel Plate used for Tank
- 33.3 Names of the supplier for the raw material, list of standard accordingly to which the raw materials are tested, list of test normally carried out on raw materials in presence of bidder's representatives, copies of type test certificates.
- 33.4 Information and copies of test certificate as in (i) above respect of bought out accessories including terminal connectors.
- 33.5 List of manufacturing facilities available. In this list the bidder shall specifically mention whether lapping machine, vacuum drying plant, air conditioned dust free room with positive air pressure for provision of insulation and winding etc are available with him.
- 33.6 Level of automation achieved and list of areas where manual processing still exists.
- 33.7 List of areas in manufacturing process where stage inspection are normally carried out for quality control and details of such tests and inspections.
- 33.8 Special features provided in the equipments to make it maintenance free.
- 33.9 List of testing equipment available with the bidder for final testing of transformers and test plant limitation, if any, vis-à-vis the type, special acceptance and routine tests specified in the relevant standards and the present specification.
- 33.10 The successful bidder shall submit the Routine Test Certificate along with documentary evidence having paid for the excise duty for the following raw materials viz Oil, Aluminum for conductors, insulating materials, Core materials, Bushing at the time of routine Testing of the fully assembled transformer.

34.0 Qualifying Requirement: AS per tender clause

35.0 Final Inspection:

10 % of the transformers offered will be tested for all tests without opening the transformer. Heat Run Test will have to be carried out on the transformer having maximum no load and full load losses taken together. C.E. (Stores) will depute his representative at the time of final inspection along with CPA's representative.

36.0 Performance Guarantee:

All transformers supplied against this specification shall be guaranteed for a period of 66 months from the date of receipt at the consignee's Stores Center or 60 months from the date of commissioning, whichever is earlier. However, any engineering error, omission, wrong provisions, etc. which do not have any effect on the time period, shall be attended to as and when observed/ pointed out without any price implication.

37.0 COST DATA SHEET:-

The bidders shall submit the cost data sheets indicating the break up prices and quantity of each raw material and components along with the unit rates required for manufacture the offered transformers along with the offer. The cost data sheet format is enclosed herewith.. If the rates quoted are not justified with the cost data sheets, the offer shall not be considered for evaluation and placement of the order.

The cost data sheets shall be scrutinized by MM CELL section.

FORMAT FOR COST DATA					
ITEM ----- KVA , ----- KV DISTRIBUTION TRANSFORMER					
Sr. No.	PARTICULARS	UNIT	UNIT RATES Rs.	QTY	AMT (Rs.)
1	CORE (M4 or better)	KG			
2	ALUMINIUM/COPPER WITH DPC	KG			
3	INSULATION PAPER	Meter			
4	OIL	LTRS			
5	TANK	NO			
6	CHANNELS	KG			
7	INSULATORS/BUSHINGS	KG			
8	OTHERS	LUMP SUM			
				TOTAL	
	WASTAGE @ %				

38.0 Schedules:

38.1 The bidder shall fill in the following schedules which form part of the tender specification and offer. If the schedules are not submitted duly filled in with the offer, the offer shall be rejected.

Schedule `A' -Guaranteed Technical Particulars

Schedule `B' -Schedule of Tenderer's Experience.

38.2 The discrepancies between the specification and the catalogs, Literatures and indicative drawings which are subject to change, submitted as part of the offer, shall not be considered and representation in this regard will not be entertained.

38.3 The Bidder shall submit the list of orders for similar type of equipments, executed of under Execution during the last three years, with full details in the schedule of Tenderer's experience (Schedule `B') to enable the purchaser to evaluate the tender.

Schedule `A'

GUARANTEED TECHNICAL PARTICULARS

As indicated in E-Tendering GTP Parameter

SCHEDULE – ‘B’
SCHEDULE OF TENDERER'S EXPERIENCE

Tenderer shall furnish here a list of similar orders executed/under execution by him to whom a reference may be made by Purchaser in case he considers such a reference necessary.

Sr. No.	Name of client & Description.	Value Of Order (along with cap. of T/F)	Period of supply & commissioning	Name & Address to whom reference may be made.
1	2	3	4	5

NAME OF FIRM _____

NAME & SIGNATURE OF TENDERER _____

DESIGNATION _____

DATE _____

Annexure I

Air Pressure Test

Name of Supplier:

Order No.:

Capacity & Voltage Ratio of Distribution Transformer : _____ kVA, ____/0.433 kV

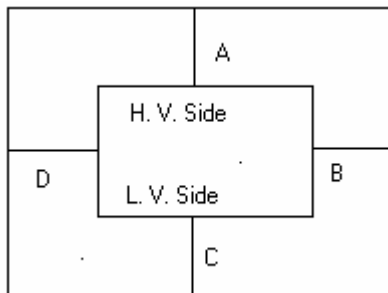
Vector Group Dyn11

Sr. No. of equipment Tested:

Date of Testing:

Reference Standard

All the opening of the transformer tank were closed with suitable gasket, bushing, valves and plugs. The compressor pipe connected at oil filling hole on conservator and a pressure guage was fitted at air vent plug. The parallel string were places around the tank, the distance between string and tank as shown in following diagram were recorded before applying the pressure and after releasing pressure.



Tank Thickness: Side _____ mm. Top & Bottom _____ mm

Test Pressure : _____ kg/cm² applied for 30 Minutes.

Test Point	Distance before Test In mm	Distance after release of Pressure in mm	Deflection In mm
A			
B			
C			
D			

Permanent Deflection : _____ mm

Permissible Limit of Permanent Deflection as per Specification : _____ mm

Test witnessed by

Tested by

Annexure II

Unbalance Current Test

Name of Supplier:

Order No.:

Capacity & Voltage Ratio of Distribution Transformer : _____ kVA, ____/0.433 kV

Vector Group Dyn11

Sr. No. of equipment Tested:

Date of Testing:

Reference Standard

Transformer Secondary terminals 2U, 2V & 2W are shorted. The shorted 2U, 2V & 2W is connected to 2N through Ammeter. The primary terminals 1U, 1V & 1W are connected to supply. The rated current _____ A is fed to primary and unbalance current is noted on Ammeter.

Unbalance Current Measured in Ammeter : _____ A

Rated current in Secondary Side : _____ A

Permissible limits as per specification : 2% of the Rated current in Secondary Side

% of Unbalance current with reference to Rated current in Secondary Side

$$= \frac{\text{Unbalance Current} \times 100}{\text{Rated current in Secondary Side}}$$

=

=

Test witnessed by

Tested by

Annexure III

Temperature Rise Test

Name of Supplier:

Order No.:

Capacity & Voltage Ratio of Distribution Transformer : _____ kVA, ____/0.433 kV

Vector Group Dyn11

Sr. No. of equipment Tested:

Date of Testing:

Reference Standard

	H. V. Winding	L. V. Winding
Rated Line Current in Amp		

Guaranteed No Load Losses _____ watt

Load Losses _____ watt

Total Losses _____ watt

P. T. Ratio : _____ / _____ =

C. T. Ratio : _____ / _____ =

Wattmeter Constant _____ =

Total Multiplying Factor (MF) _____ =

TIME	Ambient Temp.				Top Oil Temp. °C	Rise in Top Oil Temp. °C	Line Voltage in Volts	Line Current in Amps	W1 watts	W2 watts	W3 watts	W1+W2+W3 watt	Multiplying Factor (MF)	Total Watt
	T1 °C	T2 °C	T3 °C	Average °C										
Reduced to Rated Current _____ amps														

Calculation of Temperature Rise in Winding

LV Winding : Since the resistance of LV winding is less than 0.005 ohm, Temperature Rise in LV Winding is taken as temperature rise of oil as per clause no. 4.3 of IS:2026 (Part II)/1977

Temperature Rise in LV Winding = _____ °C

HV Winding Resistance across 1U1V at _____ °C = _____ ohm

Measurement of Hot Resistance of HV Winding after Shut Down.

Time	Resistance

Hot winding Resistance at Ambient Temperature _____ °C (from graph) = _____ Ohm

Temperature Rise in H. V. Winding is

$$= \frac{\text{Hot Resistance} \times (235 + \text{Cold Ambient Temperature})}{\text{Cold Resistance}} - (235 + \text{Hot Ambient Temperature})$$

=

=

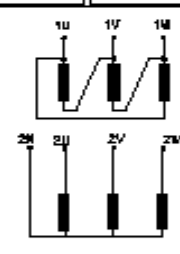
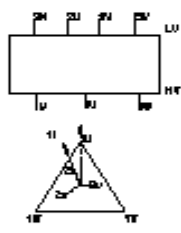
Results :

- 1) Temperature Rise in Oil = _____ °C
- 2) Temperature Rise in LV Winding = _____ °C
- 3) Temperature Rise in HV Winding = _____ °C

Test witnessed by

Tested by

Annexure -IV

115			
REF. STANDARD : IS 2026-1977 & IS 1180 3 STAR RATING, 3 PH. DISTRIBUTION TRANSFORMER			
TYPE	OUT DCR	TYPE OF COOLING	QMAN
RATED KVA		OIL TEMP. RISE	35
RATED HV V	11000	WDG TEMP RISE	40
VOLTAGE LV V	433	VOLUME OF OIL	l
RATED HV A	---	MASS OF OIL	kg
CURRENT LV A	---	WEIGHT OF CORE	kg
PHASES	3	WEIGHT OF WDGs	kg
FREQUENCY Hz	50	TOTAL MASS	kg
IMPEDANCE %	---	SERIAL NO	
GUARANTEED TOTAL LOSS	REF. LOSS AT 20 DEG.C	--- IN WATTS	
INSULATION LEVEL	U75 AC 2B	CORE	CRGO/AMDT
VECTOR GROUP	DYn-11	MONTH-YEAR OF MFG	--- & --
OWNER	MSEDCL, MUMBAI.		
A/T.NO.			
 CONNECTION DIAGRAM		 VECTOR DIAGRAM	
4 HOLES Ø3			
145			

ASHTRA STATE

DISTRIBUTION CO.

NOTE:

- ACTUAL VALUES SHALL BE PUNCHED AT THE TIME OF DISPATCH.
- RATING PLATE MATERIAL: ALUMINIUM ANODIZED
- THICKNESS OF RATING PLATE: 18 SWG
- WEIGHTS ARE SUBJECTED TO +10% TOLERANCE

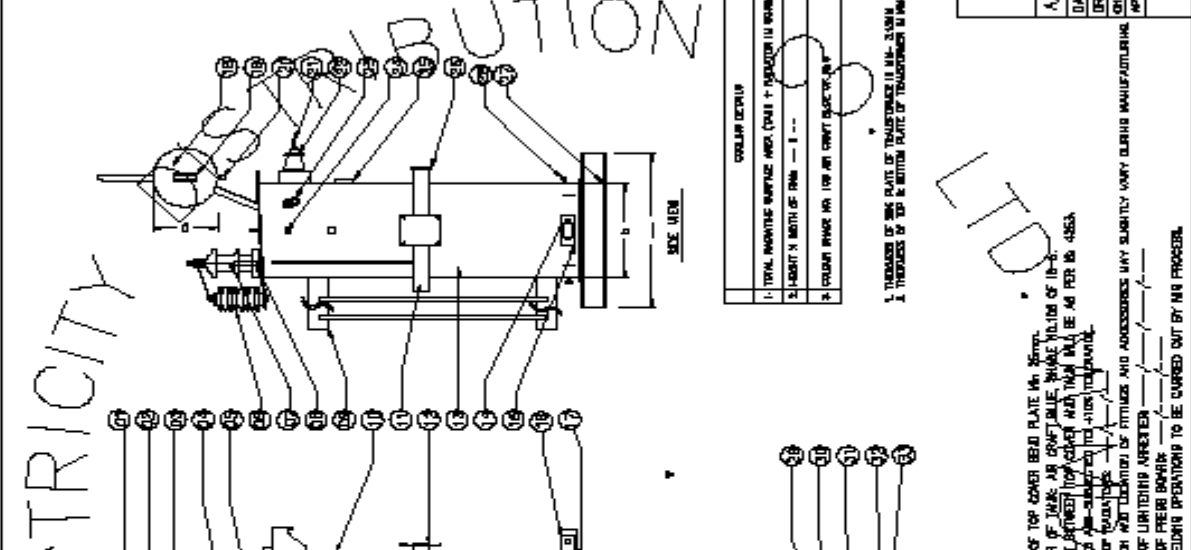
THIS IS AN INDICATIVE DRAWING

NAME OF THE CUSTOMER: MSEDCL, MUMBAI-51
 A/T. NO. _____
 QUANTITY _____
 DETAILS OF DISTRIBUTION TRANSFORMER: ---KVA, 11/0.433KV

NAME OF THE MANUFACTURE & SYMBOL

DATE	RATING & TERMINAL MARKING PLATE ---KVA, 11/0.433KV CRGO/AMDT, DIST. TRANSFORMER	
DRN		
CHD	SCALE	DRG. NO
APPD		
	---KVA	NTS

S/N	DESCRIPTION	QTY
1	BRACKET CONNECTING PINS 3/8" DIA	1
2	8X FLUTE TUBE (O.D. WITH CAP FOR EXHAUSTION)	1
3	BLIND BREATHER SET ONE	1
4	CONNECTIONS THE COVER	2
5	LETTER LUG FOR TOP COVER	2
6	LEAD-IN ARMATURE/VALVE	3
7	PISTON RING TIGHTENING	3
8	PISTON RING TIGHTENING	3
9	PISTON RING TIGHTENING	3
10	PISTON RING TIGHTENING	3
11	PISTON RING TIGHTENING	3
12	PISTON RING TIGHTENING	3
13	PISTON RING TIGHTENING	3
14	PISTON RING TIGHTENING	3
15	PISTON RING TIGHTENING	3
16	PISTON RING TIGHTENING	3
17	PISTON RING TIGHTENING	3
18	PISTON RING TIGHTENING	3
19	PISTON RING TIGHTENING	3
20	PISTON RING TIGHTENING	3
21	PISTON RING TIGHTENING	3
22	PISTON RING TIGHTENING	3
23	PISTON RING TIGHTENING	3
24	PISTON RING TIGHTENING	3
25	PISTON RING TIGHTENING	3
26	PISTON RING TIGHTENING	3
27	PISTON RING TIGHTENING	3
28	PISTON RING TIGHTENING	3
29	PISTON RING TIGHTENING	3
30	PISTON RING TIGHTENING	3
31	PISTON RING TIGHTENING	3
32	PISTON RING TIGHTENING	3
33	PISTON RING TIGHTENING	3
34	PISTON RING TIGHTENING	3
35	PISTON RING TIGHTENING	3
36	PISTON RING TIGHTENING	3
37	PISTON RING TIGHTENING	3
38	PISTON RING TIGHTENING	3
39	PISTON RING TIGHTENING	3
40	PISTON RING TIGHTENING	3
41	PISTON RING TIGHTENING	3
42	PISTON RING TIGHTENING	3
43	PISTON RING TIGHTENING	3
44	PISTON RING TIGHTENING	3
45	PISTON RING TIGHTENING	3
46	PISTON RING TIGHTENING	3
47	PISTON RING TIGHTENING	3
48	PISTON RING TIGHTENING	3
49	PISTON RING TIGHTENING	3
50	PISTON RING TIGHTENING	3
51	PISTON RING TIGHTENING	3
52	PISTON RING TIGHTENING	3
53	PISTON RING TIGHTENING	3
54	PISTON RING TIGHTENING	3
55	PISTON RING TIGHTENING	3
56	PISTON RING TIGHTENING	3
57	PISTON RING TIGHTENING	3
58	PISTON RING TIGHTENING	3
59	PISTON RING TIGHTENING	3
60	PISTON RING TIGHTENING	3
61	PISTON RING TIGHTENING	3
62	PISTON RING TIGHTENING	3
63	PISTON RING TIGHTENING	3
64	PISTON RING TIGHTENING	3
65	PISTON RING TIGHTENING	3
66	PISTON RING TIGHTENING	3
67	PISTON RING TIGHTENING	3
68	PISTON RING TIGHTENING	3
69	PISTON RING TIGHTENING	3
70	PISTON RING TIGHTENING	3
71	PISTON RING TIGHTENING	3
72	PISTON RING TIGHTENING	3
73	PISTON RING TIGHTENING	3
74	PISTON RING TIGHTENING	3
75	PISTON RING TIGHTENING	3
76	PISTON RING TIGHTENING	3
77	PISTON RING TIGHTENING	3
78	PISTON RING TIGHTENING	3
79	PISTON RING TIGHTENING	3
80	PISTON RING TIGHTENING	3
81	PISTON RING TIGHTENING	3
82	PISTON RING TIGHTENING	3
83	PISTON RING TIGHTENING	3
84	PISTON RING TIGHTENING	3
85	PISTON RING TIGHTENING	3
86	PISTON RING TIGHTENING	3
87	PISTON RING TIGHTENING	3
88	PISTON RING TIGHTENING	3
89	PISTON RING TIGHTENING	3
90	PISTON RING TIGHTENING	3
91	PISTON RING TIGHTENING	3
92	PISTON RING TIGHTENING	3
93	PISTON RING TIGHTENING	3
94	PISTON RING TIGHTENING	3
95	PISTON RING TIGHTENING	3
96	PISTON RING TIGHTENING	3
97	PISTON RING TIGHTENING	3
98	PISTON RING TIGHTENING	3
99	PISTON RING TIGHTENING	3
100	PISTON RING TIGHTENING	3



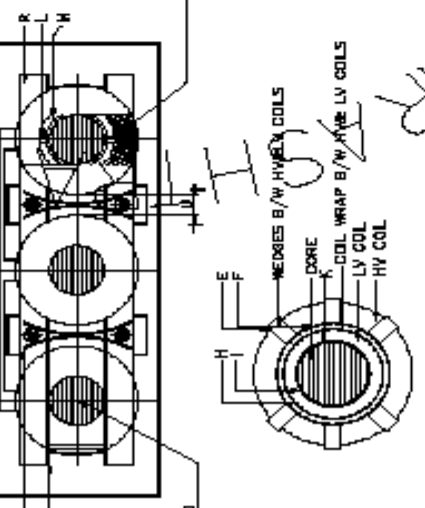
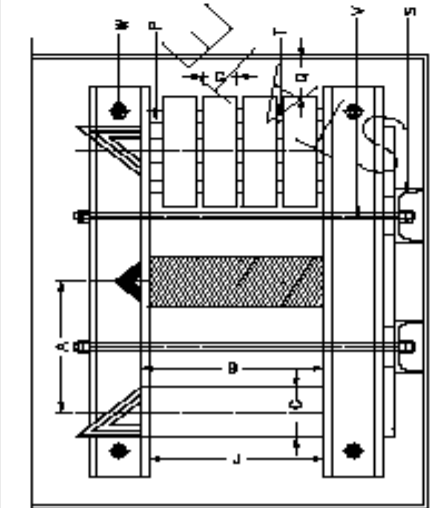
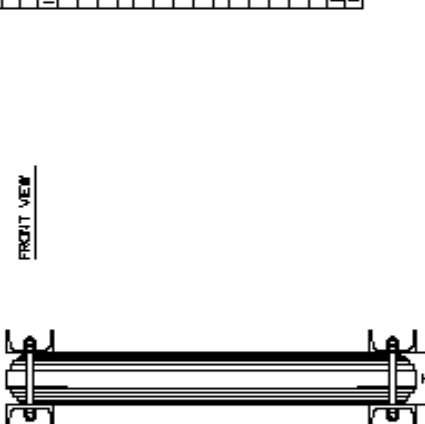
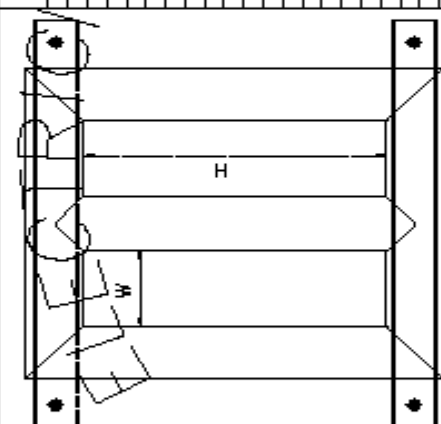
QTY	DESCRIPTION
1	BRACKET CONNECTING PINS 3/8" DIA
2	8X FLUTE TUBE (O.D. WITH CAP FOR EXHAUSTION)
3	BLIND BREATHER SET ONE
4	CONNECTIONS THE COVER
5	LETTER LUG FOR TOP COVER
6	LEAD-IN ARMATURE/VALVE
7	PISTON RING TIGHTENING
8	PISTON RING TIGHTENING
9	PISTON RING TIGHTENING
10	PISTON RING TIGHTENING
11	PISTON RING TIGHTENING
12	PISTON RING TIGHTENING
13	PISTON RING TIGHTENING
14	PISTON RING TIGHTENING
15	PISTON RING TIGHTENING
16	PISTON RING TIGHTENING
17	PISTON RING TIGHTENING
18	PISTON RING TIGHTENING
19	PISTON RING TIGHTENING
20	PISTON RING TIGHTENING
21	PISTON RING TIGHTENING
22	PISTON RING TIGHTENING
23	PISTON RING TIGHTENING
24	PISTON RING TIGHTENING
25	PISTON RING TIGHTENING
26	PISTON RING TIGHTENING
27	PISTON RING TIGHTENING
28	PISTON RING TIGHTENING
29	PISTON RING TIGHTENING
30	PISTON RING TIGHTENING
31	PISTON RING TIGHTENING
32	PISTON RING TIGHTENING
33	PISTON RING TIGHTENING
34	PISTON RING TIGHTENING
35	PISTON RING TIGHTENING
36	PISTON RING TIGHTENING
37	PISTON RING TIGHTENING
38	PISTON RING TIGHTENING
39	PISTON RING TIGHTENING
40	PISTON RING TIGHTENING
41	PISTON RING TIGHTENING
42	PISTON RING TIGHTENING
43	PISTON RING TIGHTENING
44	PISTON RING TIGHTENING
45	PISTON RING TIGHTENING
46	PISTON RING TIGHTENING
47	PISTON RING TIGHTENING
48	PISTON RING TIGHTENING
49	PISTON RING TIGHTENING
50	PISTON RING TIGHTENING
51	PISTON RING TIGHTENING
52	PISTON RING TIGHTENING
53	PISTON RING TIGHTENING
54	PISTON RING TIGHTENING
55	PISTON RING TIGHTENING
56	PISTON RING TIGHTENING
57	PISTON RING TIGHTENING
58	PISTON RING TIGHTENING
59	PISTON RING TIGHTENING
60	PISTON RING TIGHTENING
61	PISTON RING TIGHTENING
62	PISTON RING TIGHTENING
63	PISTON RING TIGHTENING
64	PISTON RING TIGHTENING
65	PISTON RING TIGHTENING
66	PISTON RING TIGHTENING
67	PISTON RING TIGHTENING
68	PISTON RING TIGHTENING
69	PISTON RING TIGHTENING
70	PISTON RING TIGHTENING
71	PISTON RING TIGHTENING
72	PISTON RING TIGHTENING
73	PISTON RING TIGHTENING
74	PISTON RING TIGHTENING
75	PISTON RING TIGHTENING
76	PISTON RING TIGHTENING
77	PISTON RING TIGHTENING
78	PISTON RING TIGHTENING
79	PISTON RING TIGHTENING
80	PISTON RING TIGHTENING
81	PISTON RING TIGHTENING
82	PISTON RING TIGHTENING
83	PISTON RING TIGHTENING
84	PISTON RING TIGHTENING
85	PISTON RING TIGHTENING
86	PISTON RING TIGHTENING
87	PISTON RING TIGHTENING
88	PISTON RING TIGHTENING
89	PISTON RING TIGHTENING
90	PISTON RING TIGHTENING
91	PISTON RING TIGHTENING
92	PISTON RING TIGHTENING
93	PISTON RING TIGHTENING
94	PISTON RING TIGHTENING
95	PISTON RING TIGHTENING
96	PISTON RING TIGHTENING
97	PISTON RING TIGHTENING
98	PISTON RING TIGHTENING
99	PISTON RING TIGHTENING
100	PISTON RING TIGHTENING

NOTE:

1. WIDTH OF TOP COVER HEAD RATE IN INCHES
2. COLLAR OF TUBE AIR CRAFT VALVE, WIDTH VALUE OF INCHES
3. COLLAR BETWEEN TOP COVER AND TUBE AIR CRAFT VALVE, WIDTH VALUE OF INCHES
4. WIDTH OF AIR CRAFT VALVE, WIDTH VALUE OF INCHES
5. WIDTH OF AIR CRAFT VALVE, WIDTH VALUE OF INCHES
6. POSITION AND THICKNESS OF FITTINGS AND ACCESSORIES MAY VARY SLIGHTLY DURING MANUFACTURING
7. NAME OF UNIDENTIFIED PARTS
8. NAME OF PISTON RING
9. ALL WEARING PARTS TO BE COVERED OUT BY AIR PROCESS

THIS IS AN INDICATIVE DRAWING

CORE	DESCRIPTION	63 PERB	K6 (113)
A	LEG CENTER		
B	WINDING HEIGHT		
C	CORE DIA		
D	EFFECTIVE CORE AREA		
HY COIL		EC GRADE ALUMINIUM	EC GRADE ALUMINIUM
E	CONDUCTOR MATERIAL		
F	NO. OF HV COILS PER PHASE		
G	OUTER DIAMETER WITH INS		
H	INNER DIAMETER WITH INS		
I	ASIAL LENGTH		
J	CONDUCTOR CROSS SECTION		
K	CONDUCTOR DIA		
L	CONDUCTOR FILLET RADIUS	DPC	DPC
M	NO. OF TURNS		
NV COIL			
O	CONDUCTOR MATERIAL	ALUMINIUM	ALUMINIUM
P	OUTER DIAMETER WITH INS		
Q	INNER DIAMETER WITH INS		
R	ASIAL LENGTH		
S	EFFECTIVE CONDUCTOR CROSS SECTION		
T	CONDUCTOR DIA		
U	CONDUCTOR FILLET RADIUS	DPC	DPC
V	NO. OF TURNS		
W	WRAP ON CORE		
X	WEDGES BETWEEN HV & LV COILS		
Y	CLEARANCE BETWEEN HV & LV COILS		
Z	FRAME CHANGED INSULATION		
AA	PHASE BANDER		
AB	END INSULATION BLOCK	25mm	25mm
AC	CLEARANCE TO TANK WALL FROM HV WINDING	30mm(1/8")	30mm(1/8")
AD	CORE FRINGE CHARGE SIZE	70x40mm	70x40mm
AE	BASE CHANNEL SIZE	75x50mm	75x50mm
AF	NO. OF SPACES B/W HV ASIAL COIL	6	6
AG	INTER PHASE CLEARANCE	10mm(3/8")	10mm(3/8")
AH	THICKNESS OF SPACERS	10mm	10mm
AI	TE ROD SIZE & NO	Ø12mmx6 #10x6	Ø12mmx6 #10x6
AJ	STUD SIZE & NO	Ø12mmx6 #10x6	Ø12mmx6 #10x6
AK	RESISTANCE AT RIBBER G (PER PHASE) PER	LV	LV
AL	RESISTANCE AT RIBBER G (PER PHASE) PER		



NOTE: 1. CORE CLAMPS ARE PARTED WITH WEDGES
 2. WY OF HV COILS SHALL BE ALONG CENTER LINE
 3. WY OF LV COILS SHALL BE ALONG CENTER LINE
 4. DIMENSIONS ARE SUBJECT TO +10% TOLERENCE
 5. DIMENSIONS ARE SUBJECT TO +10% TOLERENCE
 6. DIMENSIONS ARE SUBJECT TO +10% TOLERENCE
 7. DIMENSIONS ARE SUBJECT TO +10% TOLERENCE
 8. DIMENSIONS ARE SUBJECT TO +10% TOLERENCE
 9. DIMENSIONS ARE SUBJECT TO +10% TOLERENCE
 10. DIMENSIONS ARE SUBJECT TO +10% TOLERENCE
 11. DIMENSIONS ARE SUBJECT TO +10% TOLERENCE
 12. DIMENSIONS ARE SUBJECT TO +10% TOLERENCE
 13. DIMENSIONS ARE SUBJECT TO +10% TOLERENCE
 14. DIMENSIONS ARE SUBJECT TO +10% TOLERENCE
 15. DIMENSIONS ARE SUBJECT TO +10% TOLERENCE
 16. DIMENSIONS ARE SUBJECT TO +10% TOLERENCE
 17. DIMENSIONS ARE SUBJECT TO +10% TOLERENCE
 18. DIMENSIONS ARE SUBJECT TO +10% TOLERENCE
 19. DIMENSIONS ARE SUBJECT TO +10% TOLERENCE
 20. DIMENSIONS ARE SUBJECT TO +10% TOLERENCE
 21. DIMENSIONS ARE SUBJECT TO +10% TOLERENCE
 22. DIMENSIONS ARE SUBJECT TO +10% TOLERENCE
 23. DIMENSIONS ARE SUBJECT TO +10% TOLERENCE
 24. DIMENSIONS ARE SUBJECT TO +10% TOLERENCE
 25. DIMENSIONS ARE SUBJECT TO +10% TOLERENCE
 26. DIMENSIONS ARE SUBJECT TO +10% TOLERENCE
 27. DIMENSIONS ARE SUBJECT TO +10% TOLERENCE
 28. DIMENSIONS ARE SUBJECT TO +10% TOLERENCE
 29. DIMENSIONS ARE SUBJECT TO +10% TOLERENCE
 30. DIMENSIONS ARE SUBJECT TO +10% TOLERENCE
 31. DIMENSIONS ARE SUBJECT TO +10% TOLERENCE
 32. DIMENSIONS ARE SUBJECT TO +10% TOLERENCE
 33. DIMENSIONS ARE SUBJECT TO +10% TOLERENCE
 34. DIMENSIONS ARE SUBJECT TO +10% TOLERENCE
 35. DIMENSIONS ARE SUBJECT TO +10% TOLERENCE
 36. DIMENSIONS ARE SUBJECT TO +10% TOLERENCE
 37. DIMENSIONS ARE SUBJECT TO +10% TOLERENCE
 38. DIMENSIONS ARE SUBJECT TO +10% TOLERENCE
 39. DIMENSIONS ARE SUBJECT TO +10% TOLERENCE
 40. DIMENSIONS ARE SUBJECT TO +10% TOLERENCE
 41. DIMENSIONS ARE SUBJECT TO +10% TOLERENCE
 42. DIMENSIONS ARE SUBJECT TO +10% TOLERENCE
 43. DIMENSIONS ARE SUBJECT TO +10% TOLERENCE
 44. DIMENSIONS ARE SUBJECT TO +10% TOLERENCE
 45. DIMENSIONS ARE SUBJECT TO +10% TOLERENCE
 46. DIMENSIONS ARE SUBJECT TO +10% TOLERENCE
 47. DIMENSIONS ARE SUBJECT TO +10% TOLERENCE
 48. DIMENSIONS ARE SUBJECT TO +10% TOLERENCE
 49. DIMENSIONS ARE SUBJECT TO +10% TOLERENCE
 50. DIMENSIONS ARE SUBJECT TO +10% TOLERENCE
 51. DIMENSIONS ARE SUBJECT TO +10% TOLERENCE
 52. DIMENSIONS ARE SUBJECT TO +10% TOLERENCE
 53. DIMENSIONS ARE SUBJECT TO +10% TOLERENCE
 54. DIMENSIONS ARE SUBJECT TO +10% TOLERENCE
 55. DIMENSIONS ARE SUBJECT TO +10% TOLERENCE
 56. DIMENSIONS ARE SUBJECT TO +10% TOLERENCE
 57. DIMENSIONS ARE SUBJECT TO +10% TOLERENCE
 58. DIMENSIONS ARE SUBJECT TO +10% TOLERENCE
 59. DIMENSIONS ARE SUBJECT TO +10% TOLERENCE
 60. DIMENSIONS ARE SUBJECT TO +10% TOLERENCE
 61. DIMENSIONS ARE SUBJECT TO +10% TOLERENCE
 62. DIMENSIONS ARE SUBJECT TO +10% TOLERENCE
 63. DIMENSIONS ARE SUBJECT TO +10% TOLERENCE
 64. DIMENSIONS ARE SUBJECT TO +10% TOLERENCE
 65. DIMENSIONS ARE SUBJECT TO +10% TOLERENCE
 66. DIMENSIONS ARE SUBJECT TO +10% TOLERENCE
 67. DIMENSIONS ARE SUBJECT TO +10% TOLERENCE
 68. DIMENSIONS ARE SUBJECT TO +10% TOLERENCE
 69. DIMENSIONS ARE SUBJECT TO +10% TOLERENCE
 70. DIMENSIONS ARE SUBJECT TO +10% TOLERENCE
 71. DIMENSIONS ARE SUBJECT TO +10% TOLERENCE
 72. DIMENSIONS ARE SUBJECT TO +10% TOLERENCE
 73. DIMENSIONS ARE SUBJECT TO +10% TOLERENCE
 74. DIMENSIONS ARE SUBJECT TO +10% TOLERENCE
 75. DIMENSIONS ARE SUBJECT TO +10% TOLERENCE
 76. DIMENSIONS ARE SUBJECT TO +10% TOLERENCE
 77. DIMENSIONS ARE SUBJECT TO +10% TOLERENCE
 78. DIMENSIONS ARE SUBJECT TO +10% TOLERENCE
 79. DIMENSIONS ARE SUBJECT TO +10% TOLERENCE
 80. DIMENSIONS ARE SUBJECT TO +10% TOLERENCE
 81. DIMENSIONS ARE SUBJECT TO +10% TOLERENCE
 82. DIMENSIONS ARE SUBJECT TO +10% TOLERENCE
 83. DIMENSIONS ARE SUBJECT TO +10% TOLERENCE
 84. DIMENSIONS ARE SUBJECT TO +10% TOLERENCE
 85. DIMENSIONS ARE SUBJECT TO +10% TOLERENCE
 86. DIMENSIONS ARE SUBJECT TO +10% TOLERENCE
 87. DIMENSIONS ARE SUBJECT TO +10% TOLERENCE
 88. DIMENSIONS ARE SUBJECT TO +10% TOLERENCE
 89. DIMENSIONS ARE SUBJECT TO +10% TOLERENCE
 90. DIMENSIONS ARE SUBJECT TO +10% TOLERENCE
 91. DIMENSIONS ARE SUBJECT TO +10% TOLERENCE
 92. DIMENSIONS ARE SUBJECT TO +10% TOLERENCE
 93. DIMENSIONS ARE SUBJECT TO +10% TOLERENCE
 94. DIMENSIONS ARE SUBJECT TO +10% TOLERENCE
 95. DIMENSIONS ARE SUBJECT TO +10% TOLERENCE
 96. DIMENSIONS ARE SUBJECT TO +10% TOLERENCE
 97. DIMENSIONS ARE SUBJECT TO +10% TOLERENCE
 98. DIMENSIONS ARE SUBJECT TO +10% TOLERENCE
 99. DIMENSIONS ARE SUBJECT TO +10% TOLERENCE
 100. DIMENSIONS ARE SUBJECT TO +10% TOLERENCE

THIS IS AN INDICATIVE DRAWING

NAME OF THE MANUFACTURE & SYMBOL

INTERNAL ARRANGEMENT DRD
 SCALE DRG.NO

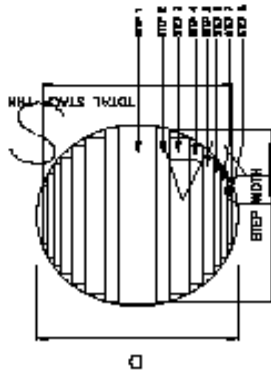
100 3 50 1000 453 5.25 133.3 100 KVA NTS

NAME OF THE CUSTOMER: NIBCO, JARANGA-81
 QTY: 10
 DETAILS OF DISTRIBUTION TRANSFORMER: -- PEARL/D/ASSY/COMP

TECHNICAL DETAILS

No. No.	DESCRIPTION	AS SPECIFIED	AS ORDERED
1	CONDUCTOR		
2	INSULATION		
3	WINDING		
4	WINDING CONDUCTIVITY		
5	CONDUCTOR SIZE IN MM		
6	INSULATION MATERIAL		
7	CURRENT CARRYING CAPACITY		
8	NO. OF WINDINGS		
9	WINDING HEIGHT		
10	WINDING LENGTH		
11	WINDING AREA		
12	WINDING VOLUME		
13	WINDING WEIGHT		
14	WINDING RESISTANCE		
15	WINDING INDUCTANCE		
16	WINDING CAPACITANCE		
17	WINDING LOSS		
18	WINDING EFFICIENCY		
19	WINDING TEMPERATURE		
20	WINDING RESISTANCE AT 75°C		
21	WINDING INDUCTANCE AT 75°C		
22	WINDING CAPACITANCE AT 75°C		
23	WINDING LOSS AT 75°C		
24	WINDING EFFICIENCY AT 75°C		
25	WINDING TEMPERATURE AT 75°C		
26	WINDING RESISTANCE AT 75°C		
27	WINDING INDUCTANCE AT 75°C		
28	WINDING CAPACITANCE AT 75°C		
29	WINDING LOSS AT 75°C		
30	WINDING EFFICIENCY AT 75°C		
31	WINDING TEMPERATURE AT 75°C		
32	WINDING RESISTANCE AT 75°C		
33	WINDING INDUCTANCE AT 75°C		
34	WINDING CAPACITANCE AT 75°C		
35	WINDING LOSS AT 75°C		
36	WINDING EFFICIENCY AT 75°C		
37	WINDING TEMPERATURE AT 75°C		
38	WINDING RESISTANCE AT 75°C		
39	WINDING INDUCTANCE AT 75°C		
40	WINDING CAPACITANCE AT 75°C		
41	WINDING LOSS AT 75°C		
42	WINDING EFFICIENCY AT 75°C		
43	WINDING TEMPERATURE AT 75°C		
44	WINDING RESISTANCE AT 75°C		
45	WINDING INDUCTANCE AT 75°C		
46	WINDING CAPACITANCE AT 75°C		
47	WINDING LOSS AT 75°C		
48	WINDING EFFICIENCY AT 75°C		
49	WINDING TEMPERATURE AT 75°C		
50	WINDING RESISTANCE AT 75°C		
51	WINDING INDUCTANCE AT 75°C		
52	WINDING CAPACITANCE AT 75°C		
53	WINDING LOSS AT 75°C		
54	WINDING EFFICIENCY AT 75°C		
55	WINDING TEMPERATURE AT 75°C		
56	WINDING RESISTANCE AT 75°C		
57	WINDING INDUCTANCE AT 75°C		
58	WINDING CAPACITANCE AT 75°C		
59	WINDING LOSS AT 75°C		
60	WINDING EFFICIENCY AT 75°C		
61	WINDING TEMPERATURE AT 75°C		
62	WINDING RESISTANCE AT 75°C		
63	WINDING INDUCTANCE AT 75°C		
64	WINDING CAPACITANCE AT 75°C		
65	WINDING LOSS AT 75°C		
66	WINDING EFFICIENCY AT 75°C		
67	WINDING TEMPERATURE AT 75°C		
68	WINDING RESISTANCE AT 75°C		
69	WINDING INDUCTANCE AT 75°C		
70	WINDING CAPACITANCE AT 75°C		
71	WINDING LOSS AT 75°C		
72	WINDING EFFICIENCY AT 75°C		
73	WINDING TEMPERATURE AT 75°C		
74	WINDING RESISTANCE AT 75°C		
75	WINDING INDUCTANCE AT 75°C		
76	WINDING CAPACITANCE AT 75°C		
77	WINDING LOSS AT 75°C		
78	WINDING EFFICIENCY AT 75°C		
79	WINDING TEMPERATURE AT 75°C		
80	WINDING RESISTANCE AT 75°C		
81	WINDING INDUCTANCE AT 75°C		
82	WINDING CAPACITANCE AT 75°C		
83	WINDING LOSS AT 75°C		
84	WINDING EFFICIENCY AT 75°C		
85	WINDING TEMPERATURE AT 75°C		
86	WINDING RESISTANCE AT 75°C		
87	WINDING INDUCTANCE AT 75°C		
88	WINDING CAPACITANCE AT 75°C		
89	WINDING LOSS AT 75°C		
90	WINDING EFFICIENCY AT 75°C		
91	WINDING TEMPERATURE AT 75°C		
92	WINDING RESISTANCE AT 75°C		
93	WINDING INDUCTANCE AT 75°C		
94	WINDING CAPACITANCE AT 75°C		
95	WINDING LOSS AT 75°C		
96	WINDING EFFICIENCY AT 75°C		
97	WINDING TEMPERATURE AT 75°C		
98	WINDING RESISTANCE AT 75°C		
99	WINDING INDUCTANCE AT 75°C		
100	WINDING CAPACITANCE AT 75°C		

CORE CIRCLE - Ø 1000mm HEIGHT -



THIS IS AN INDICATIVE DRAWING

STEP NO.	1	2	3	4	5	6	7	8
STEP WIDTH								
STACK THK								
TOTAL CROSS SECTION AREA	= 0.07m ²							
EFFECTIVE CORE AREA	= 0.07m ²							

NOTE:

1. ALL DIMENSIONS ARE IN mm.

2. DIMENSIONS & WEIGHTS ARE SUBJECT TO +10% TOLERANCE EXCEPT THOSE MENTIONED AS MIN.

3. KVA PHASES FREQUENCY COOLING

4. VOLTAGE

5. CURRENT

6. APPD

TECHNICAL DETAILS DRAWING

SCALE

DRG. NO

NTS

KVA

No. No.	DESCRIPTION	AS SPECIFIED	AS ORDERED
1	CONDUCTOR		
2	INSULATION		
3	WINDING		
4	WINDING CONDUCTIVITY		
5	CONDUCTOR SIZE IN MM		
6	INSULATION MATERIAL		
7	CURRENT CARRYING CAPACITY		
8	NO. OF WINDINGS		
9	WINDING HEIGHT		
10	WINDING LENGTH		
11	WINDING AREA		
12	WINDING VOLUME		
13	WINDING WEIGHT		
14	WINDING RESISTANCE		
15	WINDING INDUCTANCE		
16	WINDING CAPACITANCE		
17	WINDING LOSS		
18	WINDING EFFICIENCY		
19	WINDING TEMPERATURE		
20	WINDING RESISTANCE AT 75°C		
21	WINDING INDUCTANCE AT 75°C		
22	WINDING CAPACITANCE AT 75°C		
23	WINDING LOSS AT 75°C		
24	WINDING EFFICIENCY AT 75°C		
25	WINDING TEMPERATURE AT 75°C		
26	WINDING RESISTANCE AT 75°C		
27	WINDING INDUCTANCE AT 75°C		
28	WINDING CAPACITANCE AT 75°C		
29	WINDING LOSS AT 75°C		
30	WINDING EFFICIENCY AT 75°C		
31	WINDING TEMPERATURE AT 75°C		
32	WINDING RESISTANCE AT 75°C		
33	WINDING INDUCTANCE AT 75°C		
34	WINDING CAPACITANCE AT 75°C		
35	WINDING LOSS AT 75°C		
36	WINDING EFFICIENCY AT 75°C		
37	WINDING TEMPERATURE AT 75°C		
38	WINDING RESISTANCE AT 75°C		
39	WINDING INDUCTANCE AT 75°C		
40	WINDING CAPACITANCE AT 75°C		
41	WINDING LOSS AT 75°C		
42	WINDING EFFICIENCY AT 75°C		
43	WINDING TEMPERATURE AT 75°C		
44	WINDING RESISTANCE AT 75°C		
45	WINDING INDUCTANCE AT 75°C		
46	WINDING CAPACITANCE AT 75°C		
47	WINDING LOSS AT 75°C		
48	WINDING EFFICIENCY AT 75°C		
49	WINDING TEMPERATURE AT 75°C		
50	WINDING RESISTANCE AT 75°C		
51	WINDING INDUCTANCE AT 75°C		
52	WINDING CAPACITANCE AT 75°C		
53	WINDING LOSS AT 75°C		
54	WINDING EFFICIENCY AT 75°C		
55	WINDING TEMPERATURE AT 75°C		
56	WINDING RESISTANCE AT 75°C		
57	WINDING INDUCTANCE AT 75°C		
58	WINDING CAPACITANCE AT 75°C		
59	WINDING LOSS AT 75°C		
60	WINDING EFFICIENCY AT 75°C		
61	WINDING TEMPERATURE AT 75°C		
62	WINDING RESISTANCE AT 75°C		
63	WINDING INDUCTANCE AT 75°C		
64	WINDING CAPACITANCE AT 75°C		
65	WINDING LOSS AT 75°C		
66	WINDING EFFICIENCY AT 75°C		
67	WINDING TEMPERATURE AT 75°C		
68	WINDING RESISTANCE AT 75°C		
69	WINDING INDUCTANCE AT 75°C		
70	WINDING CAPACITANCE AT 75°C		
71	WINDING LOSS AT 75°C		
72	WINDING EFFICIENCY AT 75°C		
73	WINDING TEMPERATURE AT 75°C		
74	WINDING RESISTANCE AT 75°C		
75	WINDING INDUCTANCE AT 75°C		
76	WINDING CAPACITANCE AT 75°C		
77	WINDING LOSS AT 75°C		
78	WINDING EFFICIENCY AT 75°C		
79	WINDING TEMPERATURE AT 75°C		
80	WINDING RESISTANCE AT 75°C		
81	WINDING INDUCTANCE AT 75°C		
82	WINDING CAPACITANCE AT 75°C		
83	WINDING LOSS AT 75°C		
84	WINDING EFFICIENCY AT 75°C		
85	WINDING TEMPERATURE AT 75°C		
86	WINDING RESISTANCE AT 75°C		
87	WINDING INDUCTANCE AT 75°C		
88	WINDING CAPACITANCE AT 75°C		
89	WINDING LOSS AT 75°C		
90	WINDING EFFICIENCY AT 75°C		
91	WINDING TEMPERATURE AT 75°C		
92	WINDING RESISTANCE AT 75°C		
93	WINDING INDUCTANCE AT 75°C		
94	WINDING CAPACITANCE AT 75°C		
95	WINDING LOSS AT 75°C		
96	WINDING EFFICIENCY AT 75°C		
97	WINDING TEMPERATURE AT 75°C		
98	WINDING RESISTANCE AT 75°C		
99	WINDING INDUCTANCE AT 75°C		
100	WINDING CAPACITANCE AT 75°C		

NAME OF THE CUSTOMER: MSEDCL, MUMBAI-51
 A/T. NO. 10
 QUANTITY: 1000
 DETAILS OF DISTRIBUTION TRANSFORMER: ---KVA, 11/0.433KV, CSP

NAME OF THE MANUFACTURE & SYMBOL

DESCRIPTION	H	W	T	D
CORE WINDOW HEIGHT				
CORE WINDOW CENTRE TO CENTRE				
CORE STACK THK				
CORE DIA				

STEP NO.	1	2	3	4	5	6	7	8
STEP WIDTH								
STACK THK								
TOTAL CROSS SECTION AREA	= 0.07m ²							
EFFECTIVE CORE AREA	= 0.07m ²							

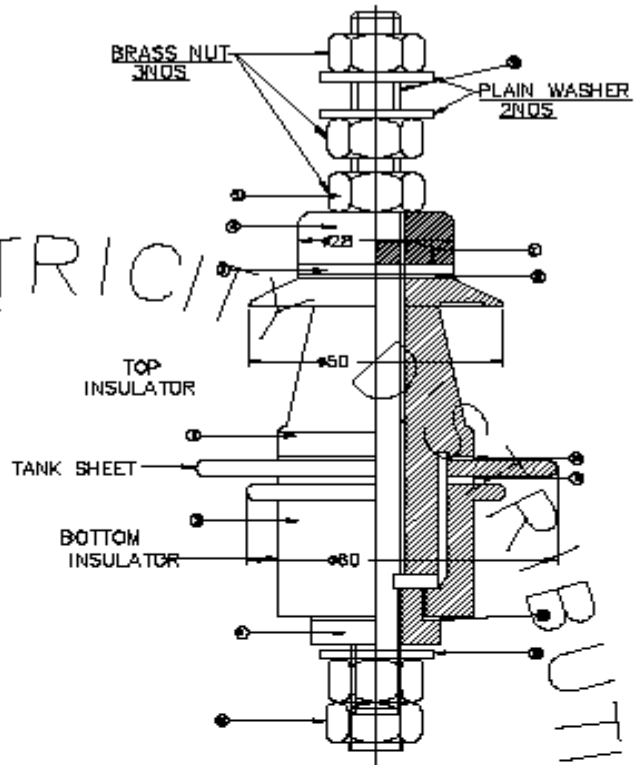
TRANSFORMER BUSHING AS PER IS:3347

ELECTRICAL CHARACTERISTICS:

1. RATED VOLTAGE : 1 KV
2. RATED CURRENT : 250 Amp
3. POWER FREQUENCY WITHSTAND VOLTAGE : 3 KV
4. CREEPAGE DISTANCE : 25 MM. (MIN.)

NOTE:

PERFORMANCE REQUIREMENTS OF THE BUSHING SHALL CONFIRM TO IS: 3347



MAKE: / / / / /

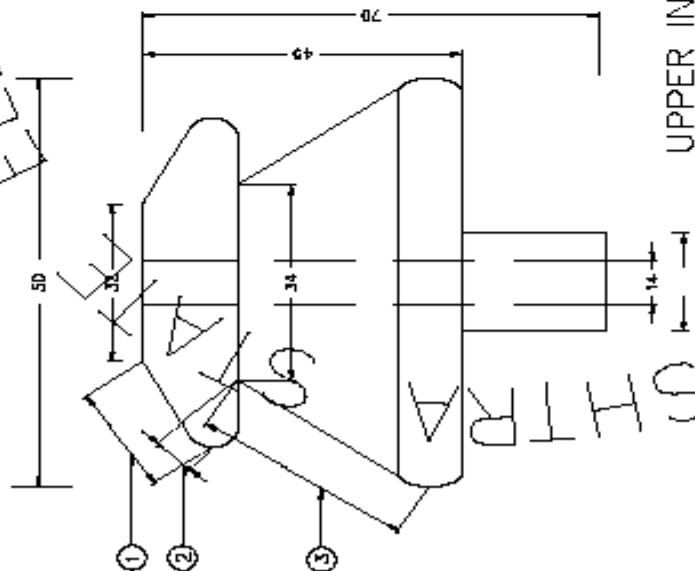
Sl. No.	DESCRIPTION	QTY
1	INSULATOR UPPER	1
2	INSULATOR LOWER	1
3	WASHER	2
4	TOP END WASHER	1
5	STEM WASHER	1
6	BOTTOM NUT	1
7	SEALING WASHER (TYPE-A)	1
8	SEALING WASHER (TYPE-B)	1
9	SEALING WASHER (TYPE-C)	1
10	SEALING WASHER (TYPE-D)	1
11	SEALING WASHER (TYPE-E)	1
12	SEALING WASHER (TYPE-F)	1
13	HEXLOCK NUT-M12	1
14	PLAIN WASHER-M12	1
15	SEALING WASHER (TYPE G)	1

NAME OF THE CUSTOMER: MSEDCL, MUMBAI-51
 A/T. NO. MUMBAI
 QUANTITY: MUMBAI
 DETAILS OF DISTRIBUTION TRANSFORMER: 100KVA, 11/0.433KV, CSP

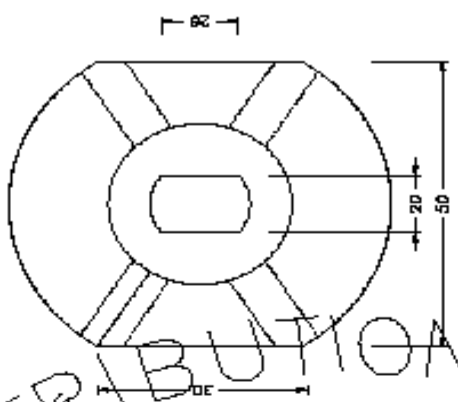
NAME OF THE MANUFACTURE & SYMBOL	
A/T. NO.	
Note	
LV BUSHING ASSEMBLY DRAWING 100KVA, 11/0.433KV, CSP DIST. TRANSFORMER	
CHKD	DRG. NO
APPD	

THIS IS AN INDICATIVE DRAWING

ELECTRICITY DISTRIBUTION



UPPER INSULATOR



LOWER INSULATOR

CREEPAGE DISTANCE	
PT.No.	DIM
1	14
2	11
3	40

TOTAL 65
MATHAP

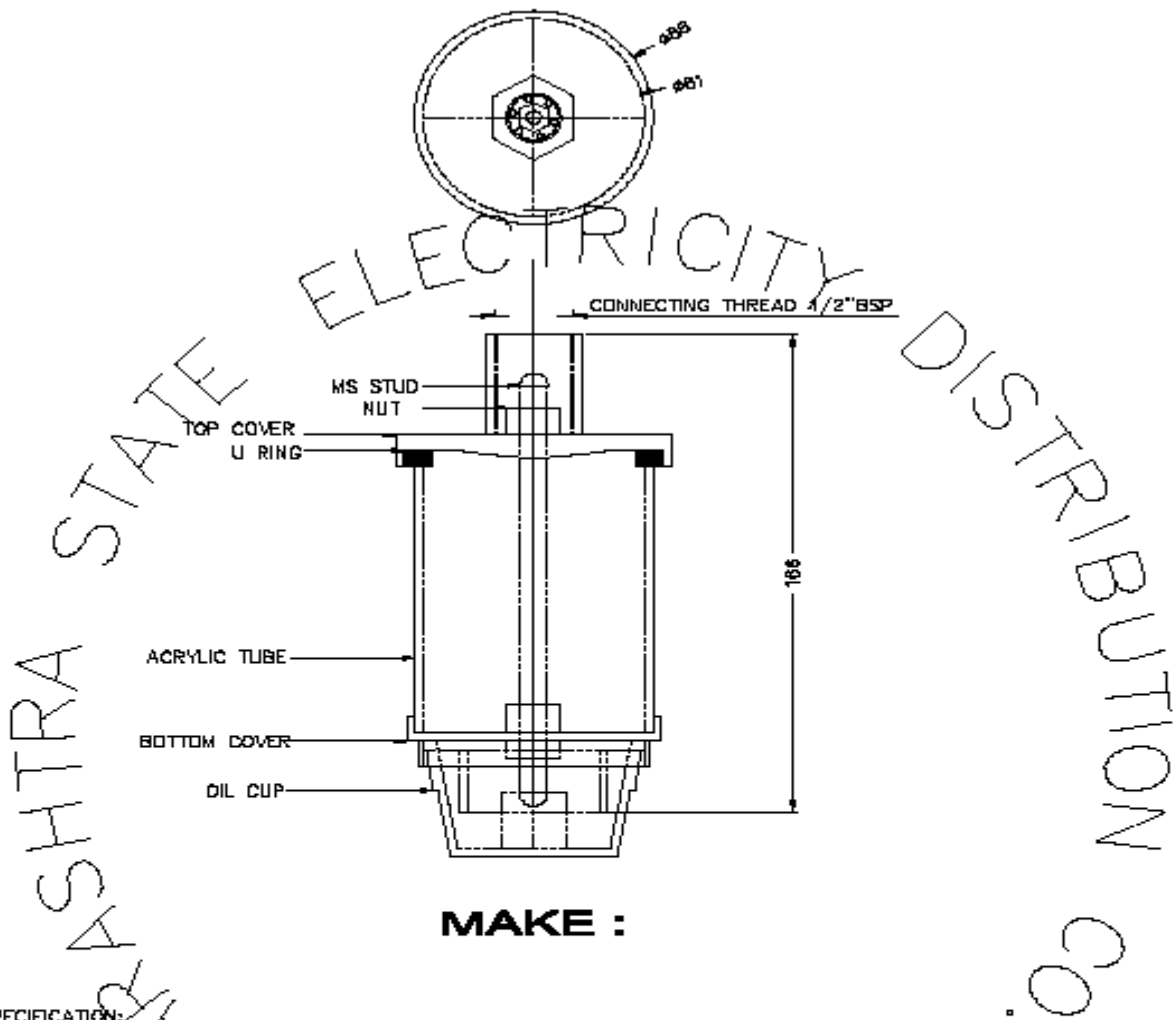
NAME OF THE CUSTOMER: MSEDCL, MUMBAI-51
 A/T. NO.
 QUANTITY:
 DETAILS OF DISTRIBUTION TRANSFORMER: --KVA, 11/0.433KV, CSP

NAME OF THE MANUFACTURE & SYMBOL	
A/T. NO.	DRG. NO
CREEPAGE DISTANCE DRAWING OF LV INSULATOR TYPE/2500MM. --MVA, MUMBAI DISTRIBUTION TRANSFORMER	
CHKD	
APPD	

- NOTE:
1. COLOUR - BROWN GLAZED.
 2. CREEPAGE DISTANCE - 25mm/KV
 3. AS PER IS: 3347(PART-1/SEC)
 4. ALL DIMENSIONS IN mm

THIS IS AN INDICATIVE DRAWING

SILICAGEL BREATHER



MAKE :

SPECIFICATION:

PART NAME	MATERIAL USED
TOP COVER	NYLON
BOTTOM COVER	NYLON
OIL CUP	ACRYLIC

NAME OF THE CUSTOMER: MSEDCL, MUMBAI-51
 A/T. NO.
 QUANTITY
 DETAILS OF DISTRIBUTION TRANSFORMER: -- KVA, 11/0.4-33KV, CSP

NAME OF THE MANUFACTURE & SYMBOL

A/T.NO:

Make:

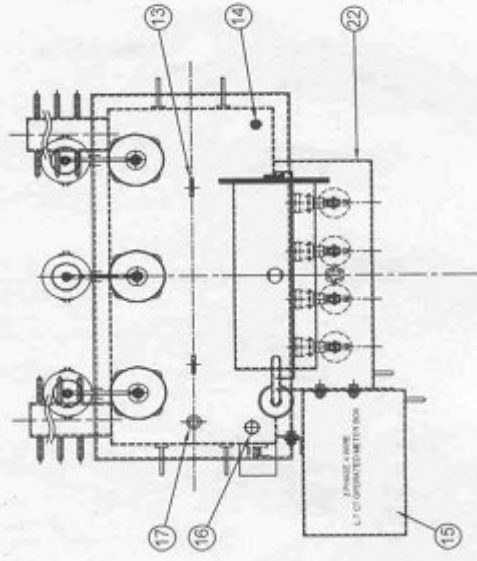
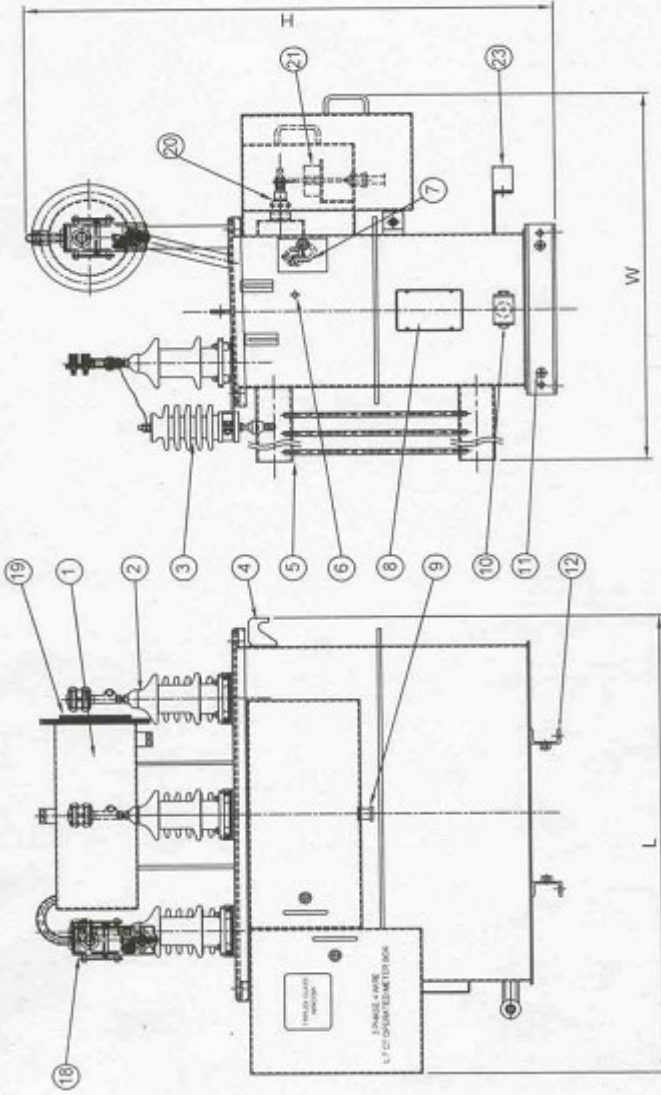
SILICA GEL BREATHER, 250gms

THIS IS AN INDICATIVE DRAWING

CHD
 APPD

DRG.NO

ANNEXURE - V



23	CABLE HOLDING CLAMP	1
22	CT MOUNTING BOX	1
21	CURRENT TRANSFORMER	3
20	LV BUSBAR (1.5x4250 AL)	4
19	SOIL LEVEL GAUGE	1
18	ALUMINIUM DIE CAST ZINC ALLOY BREATHER	1
17	PRESSURE RELIEF DEVICE	1
16	AIR RELEASE PLUG	1
15	3 PHASE 4 WIRE LT CT OPERATED METER BOX	1
14	THERMOMETER POCKET WITH CAP	1
13	TOP COVER LIFTING LOGS	2
12	BOTTOM CHANNEL WITH PULLING EYE	2
11	EARTHING TERMINAL	2
10	DRAIN CUM SAMPLING VALVE	1
9	CABLE CLAMP FOR 35% CORE CABLE	1
8	RATING AND TERMINAL MARKING PLATE	1
7	CIRCUIT BREAKER OPERATING HANDLE WITH PROTECTION COVER & LOCK	1
6	INDICATION LAMP FOR OVER LOAD	1
5	RADIATOR	2
4	LIFTING LUGS	4
3	LIGHTNING ARRESTER (RAVEMA)	3
2	HV BUSBAR WITH BI-METALLIC CONNECTOR (120x250x4)	3
1	CORRECTION WITH OIL FILLING PLUG & DRAIN PLUG	1
NO	DESCRIPTION	QTY

MAHARASHTRA STATE ELECTRICITY
DISTRIBUTION COMPANY LTD.

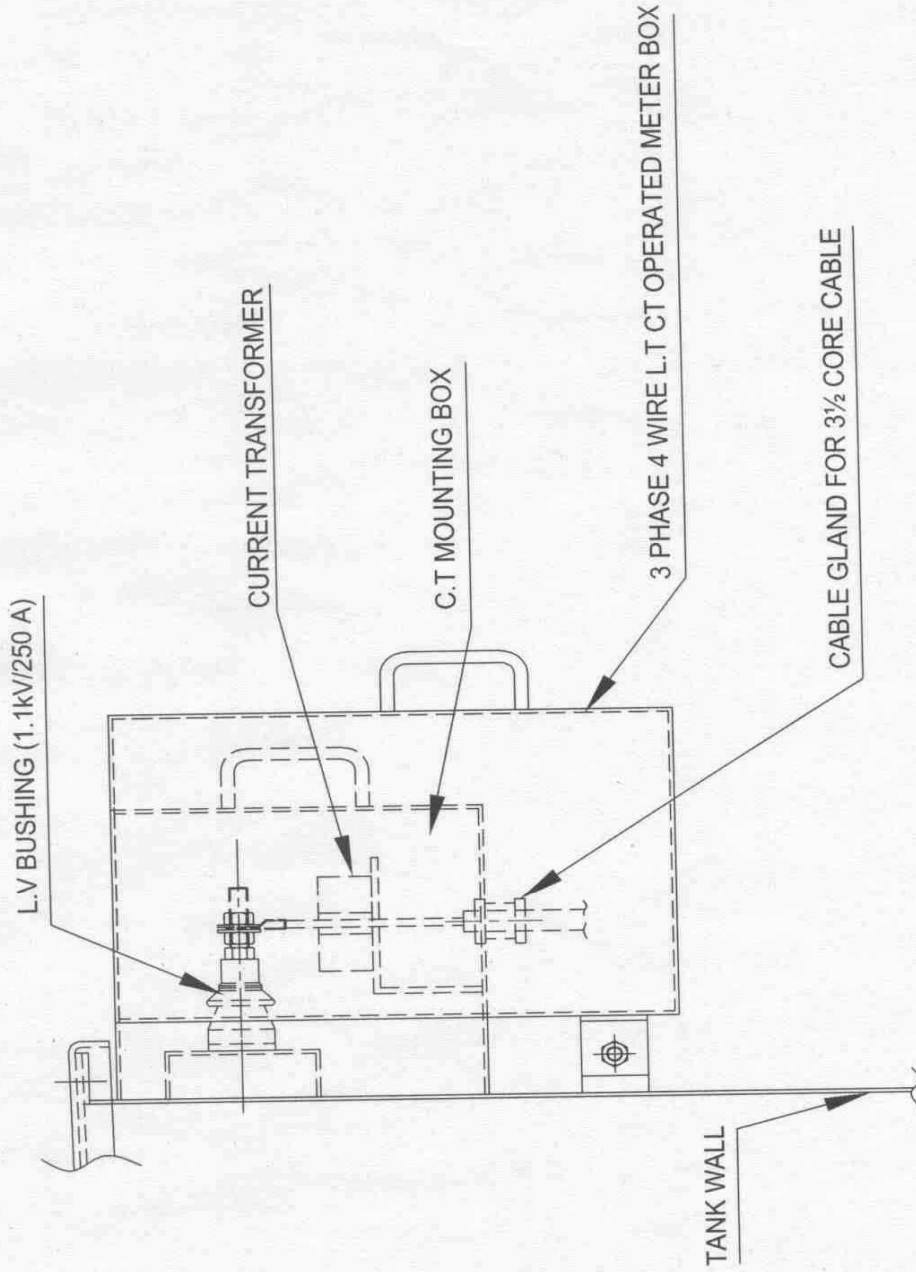
LOA NO.SP/T-

TITLE : OUTLINE GENERAL ARRANGEMENT
FOR 63 & 100KVA DISTRIBUTION TRANSFORMER
DRAWING No : MSED/MM II / 63-100 DT/01

SCALE	NTS	DRAWN	CHECKED	RECOMMENDED	APVD
1:1		[Signature]	[Signature]	10/9	[Signature]
DATE		10.9.07			

THIS IS AN INDICATIVE DRAWING

ANNEXURE - V



MAHARASHTRA STATE ELECTRICITY
DISTRIBUTION COMPANY LTD.

LOA NO.SPT/-

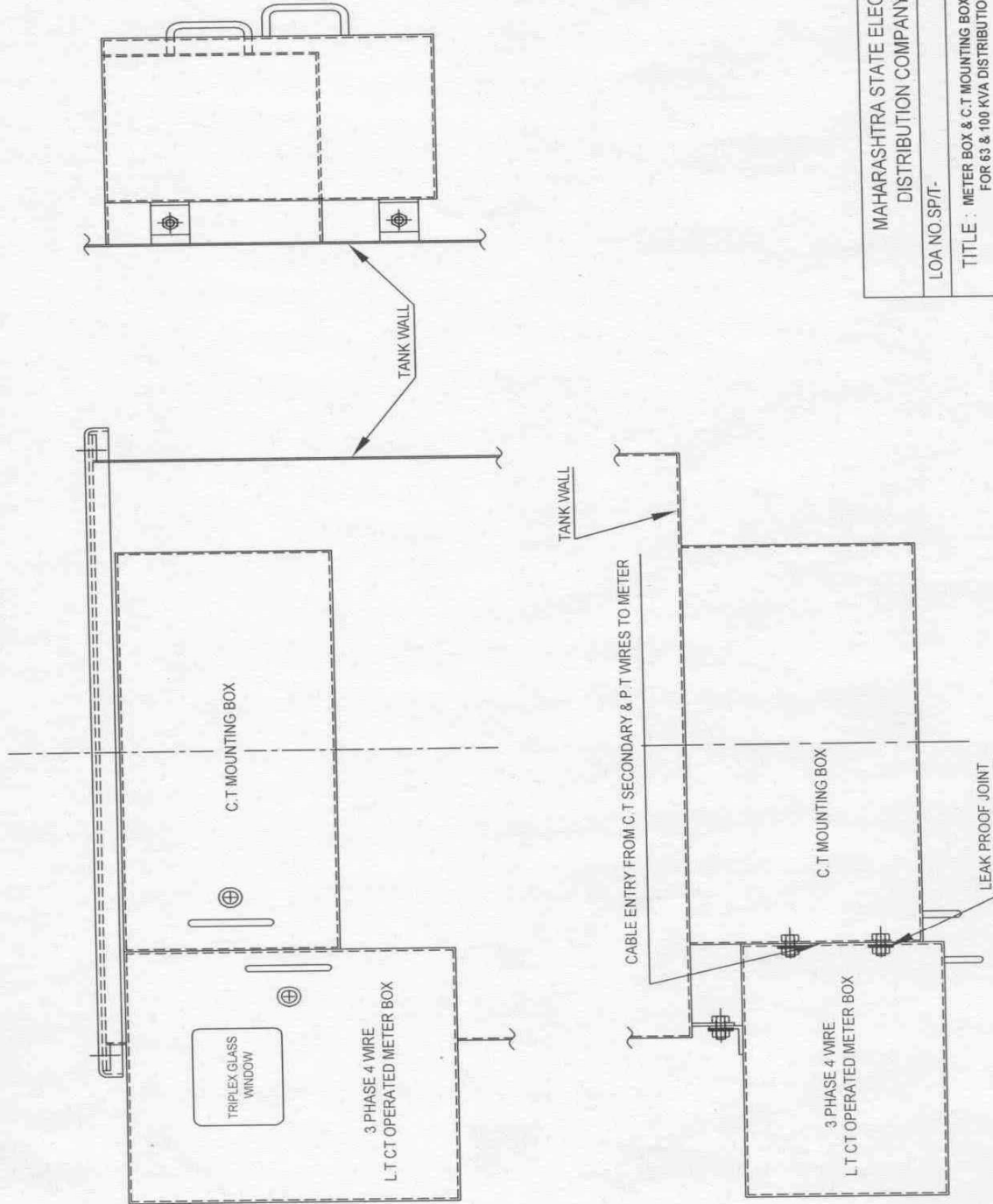
TITLE : METER BOX & C.T MOUNTING BOX ARRANGEMENT
FOR 63 & 100 KVA DISTRIBUTION TRANSFORMER

DRAWING No : MSEDCL/MM II /63-100 DT/02

DRAWN	CHECKED	RECOMMENDED	APVD
<i>[Signature]</i>	<i>[Signature]</i>	<i>[Signature]</i>	<i>[Signature]</i>
SCALE : NTS	10.9.07	10.9	

THIS IS AN INDICATIVE DRAWING

ANNEXURE- V



MAHARASHTRA STATE ELECTRICITY
DISTRIBUTION COMPANY LTD.

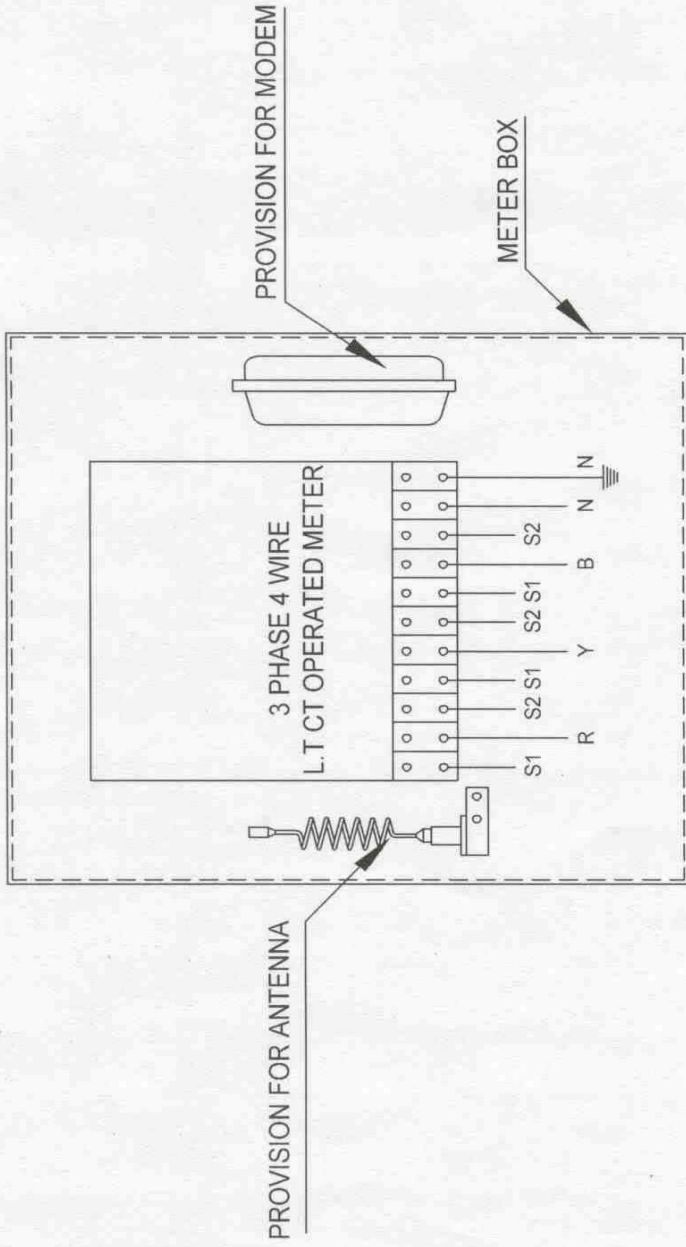
LOA NO SPT-

TITLE : METER BOX & C.T MOUNTING BOX ARRANGEMENT
FOR 63 & 100 KVA DISTRIBUTION TRANSFORMER

DRAWING No. : MSEDCL/MM 11 / 63-100 DT/03

SCALE	NTS	DRAWN	CHECKED	RECOMMENDED	AP/VD
		<i>[Signature]</i>	<i>[Signature]</i>	<i>[Signature]</i>	<i>[Signature]</i>
		10-9-07			

THIS IS AN INDICATIVE DRAWING



MAHARASHTRA STATE ELECTRICITY
DISTRIBUTION COMPANY LTD.

LOA NO SP/T-
TITLE : METER BOX WITH METER FOR 63 & 100
KVA DISTRIBUTION TRANSFORMER

DRAWING No. : MSEDCL/MM II / 63-100 DT/04

SCALE : NTS	DRAWN	CHECKED	RECOMMENDED	APVD
	10.9.07		10/9	

THIS IS AN INDICATIVE DRAWING